



MIDDLE FLOOR APARTMENT 2 BEDROOMS 2 BATHROOMS IN BENALMADENA COSTA

 Benalmadena Costa

REF# R5407168 399.950 €

BEDS

2

BATHS

2

BUILT

80 m²

TERRACE

15 m²

EXCLUSIVE 2-BEDROOM APARTMENT WITH SEA VIEWS ON THE SECOND LINE OF THE BEACH

Discover this magnificent 2bedroom, 2bathroom (1 on suit) apartment located on the second line of the beach in the highly sought-after area of Benalmádena Costa. An ideal property both as a permanent residence, a holiday home, or an investment thanks to its excellent location and features.

The property stands out for its location, spaciousness, and privacy, as well as a generous living room with a dining area that leads to a beautiful terrace with sea views.

It also belongs to one of the most prestigious residential complexes in Benalmádena, known for its upkeep, maintenance, and excellent condition, allowing residents to enjoy a wonderful swimming pool with communal gardens.

IDILIQ

ESTATES

The property includes a large, enclosed underground garage, providing great convenience as well as additional storage space.

Additionally, there is communal parking available, ideal for visitors of family and friends.

A perfect opportunity to enjoy the quality of life on the Costa del Sol, with all services, shops, and transport links just a couple of minutes away.

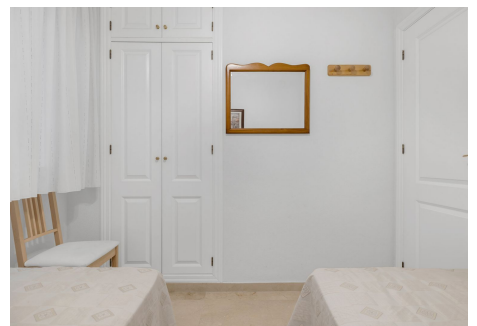
Don't miss the chance to be the first to view it!

SHORT-TERM (TOURIST) RENTALS NOT PERMITTED

Community fees: €110/month

Property tax (IBI): €600/year

Garbage collection: €172/year



IDILIQ

ESTATES

