



R4993909

 Riviera del Sol

REF# R4993909 299.000 €

BEDS

2

BATHS

2

BUILT

89 m²

PLOT

40 m²

TERRACE

53 m²

WONDERFUL CORNER PENTHOUSE FOR GREATER PRIVACY WITH PANORAMIC VIEWS OF THE MEDITERRANEAN!

Can you imagine enjoying the sun from your penthouse with panoramic sea views?

This is it! Located in one of the most exclusive areas of the coast, this wonderful penthouse offers you the opportunity to live with panoramic sea views. A unique home where comfort and nature meet in perfect harmony. This modern penthouse in Riviera del Sol is the ideal retreat for those seeking tranquility and natural beauty, with easy access to all local amenities. Located in one of the most coveted areas of the Costa del Sol, this penthouse offers a perfect combination of luxury and comfort. From its spacious terrace, you can enjoy spectacular sunsets and incomparable sea views.

Features:

-Area: 75 m² usable area and 56 m² terrace.

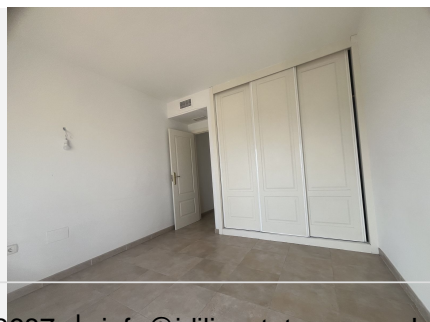
-Bedrooms: Two spacious and bright

+34 951 123 083 | +44 (0)330 179 8687 | info@idiliqestates.com Local 28, Edificio D, Centro de Negocios Puerta de Banús, N-340, Km 175, 29660 Nueva Andalucía

IDILIQ

ESTATES

- Bathrooms: Two modern and elegant, one en suite.
 - Terrace: Spacious terrace with spectacular sea views, ideal for relaxing and entertaining.
 - Kitchen: Fully equipped kitchen.
 - Living room: Bright living room with large windows to make the most of the views.
 - Pool: Access to the communal pool.
 - Common areas: Enjoy beautiful, well-kept gardens where you can relax and a paddle tennis court.
 - Air conditioning/heating: Climate control for your comfort year-round.
- Garage: Parking space and storage room included in the price.



IDILIQ

ESTATES

