



R5400007

📍 Puerto Banús

REF# R5400007 719.000 €

BEDS

2

BATHS

2

BUILT

129 m²

TERRACE

20 m²

Penthouse in Puerto Banús

Penthouse located in a sought-after residential complex in Puerto Banús, within walking distance to the beach, restaurants, the promenade and all local amenities.

The property offers 2 bedrooms and 2 bathrooms, with a total built area of 149 m², including approximately 100 m² of interior space. The layout includes a bright living area with access to a spacious terrace, kitchen, two bedrooms and two bathrooms.

The gated complex offers landscaped tropical gardens, outdoor and indoor swimming pools, spa area, sauna, gym and security. Its beachside location and proximity to Puerto Banús make it suitable as a holiday home, permanent residence or investment property.

A well-positioned penthouse in one of Marbella's most established coastal areas.

IDILIQ

ESTATES

Features:

Penthouse

Puerto Banús

2 Bedrooms

2 Bathrooms

149 m² Built

Approx. 100 m² Interior

Private Terrace

Gated Complex

Communal Gardens

Outdoor Pool

Indoor Pool

Gym

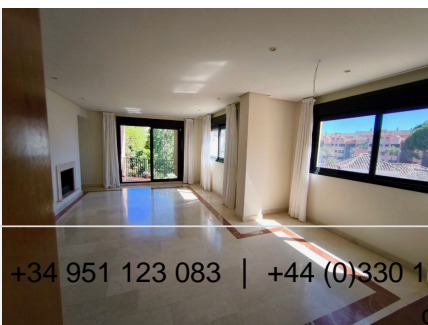
Sauna

Spa Area

Security

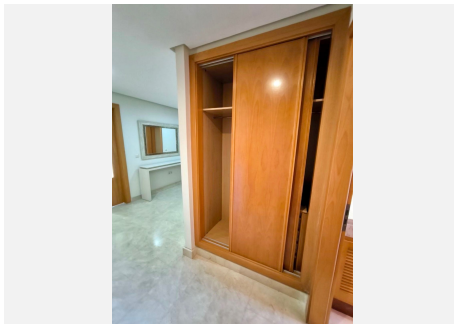
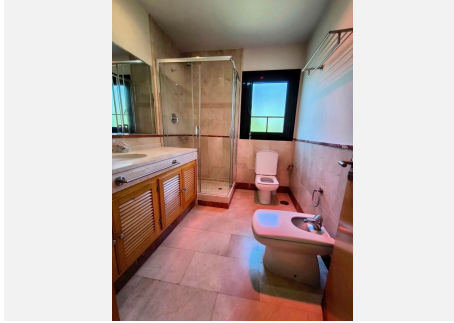
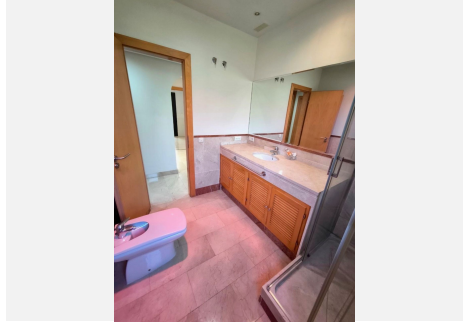
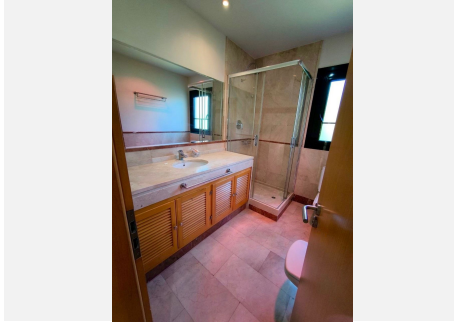
Walking Distance to Beach

Walking Distance to Amenities



IDILIQ

ESTATES



IDILIQ

ESTATES

