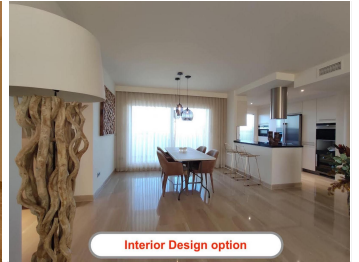


Interior Design option



Optional Fireplace & Interior Design option



Interior Design option

R4040146

📍 Mijas Costa

REF# R4040146 400.000 €

BEDS

2

BATHS

2

BUILT

115 m²

PLOT

66 m²

TERRACE

66 m²

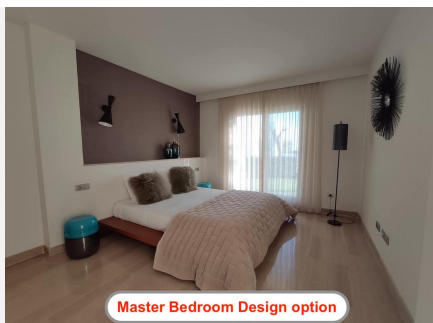
New, very large, south-facing 2-bed/2-bath apartment (115m²) in the exclusive private community 'Castillo del Cerrado'. With two large sunny terraces (66m²) it offers panoramic sea and mountain views, as well as direct access to the extensive pool and garden areas. The apartment is equipped with high-quality features including Italian marble floors, heated bathroom floors, home automation system, ducted air-conditioning, separate laundry room, etc. This apartment is new/unused, and has no kitchen cabinets/equipment yet. Optionally, we will install a brand-new, luxury kitchen (in consultation with the buyer) before transfer of the property. The costs of typically kitchen packages ranges from €20-€35k. An interior designer is available for all clients, and further changes, like a gas fireplace, can be installed as optional extras before moving in. The private gated community has extensive garden areas (directly accessible from your terrace) with a large exterior pool and an architectural designed heated indoor spa. With only 5 apartments in your building and no shared walls with neighbours, it guarantees tranquillity and privacy with triple-level security and dual video entrance control. To guarantee maximum privacy and enjoyment for all residents the community does not allow short-term rentals (long-term rentals allowed). Due to its elevated location, Castillo del Cerrado offers spectacular views next to golf, tennis, paddle, bars/restaurants and only 3km from Miramar/beach. It is conveniently located between Malaga & Marbella, close to the vibrant village of Fuengirola and only

+34 951 123 083 | +44 (0)330 179 8687 | info@idiliqestates.com Local 28, Edificio D, Centro de Negocios Puerta de Banús, N-340, Km 175, 29660 Nueva Andlucia

IDILIQ

ESTATES

20min from the airport. The apartment comes with underground parking and a large storage room. The price per m2 is extremely competitive with units of the same quality.



+34 951 123 983 | +44 (0)330 179 8687 | info@idiliqestates.com Local 28, Edificio D, Centro de Negocios Puerta de Banús, N-340, Km 175, 29660 Nueva Andlucia