

IDILIQ

ESTATES



R4584670

📍 Benalmadena

REF# R4584670 1.494.770 €

BEDS

4

BATHS

4.5

BUILT

299 m²

PLOT

650 m²

TERRACE

650 m²

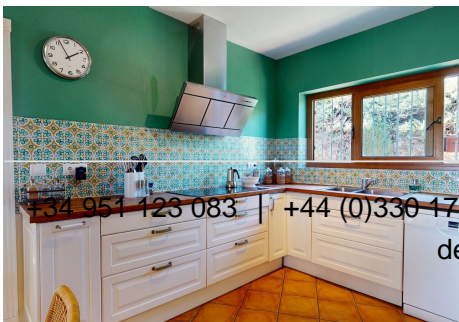
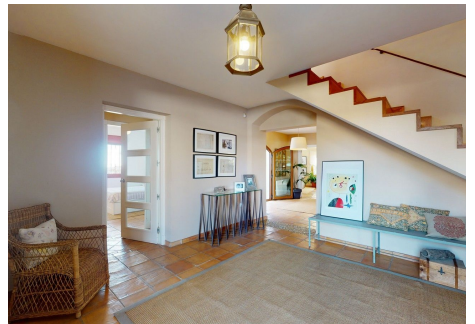
In the heart of Benalmádena, a distinctive villa invites you into a realm of understated elegance and practical luxury. Boasting over 300sqm of covered space on a generous 950sqm plot, this two-story residence stands as a testament to refined living. Upon entering, an expansive hall seamlessly connects the garage, dining area, and two bedrooms, including the master suite. The southeast orientation of the bedrooms ensures a daily spectacle—the mesmerizing sunrise over the sea. The master bedroom, adorned with an en-suite bathroom and double sinks, reveals a thoughtful touch with a spacious walk-in closet and a comfortable sitting/reading area overlooking sea, garden, and pool views. The dining area, positioned as the central hub, introduces a vintage-style kitchen delicately separated by a wooden frame. This subtle division allows the air and the gentle sounds of a Moorish fountain to add an element of serenity. The result is a captivating backdrop of panoramic sea views. The formal dining and living room, unfolds with ample space for a large sitting area and a fireplace. The highlight is the captivating sea views that complete this space. A guest toilet discreetly complements this level. Ascending to the upper level, a cozier ambiance unfolds. An office with an ample terrace, sheltered by a pergola, beckons for moments of contemplation. This terrace seamlessly connects to a secondary living room featuring wooden beams, a fireplace, a chaise-long facing a large flat TV, a piano, and extensive sea views—an ideal retreat for winter afternoons. A large bedroom adjacent to

+34 951 123 083 | +44 (0)330 179 8687 | info@idiliqestates.com Local 28, Edificio D, Centro de Negocios Puerta de Banús, N-340, Km 175, 29660 Nueva Andlucia

IDILIQ

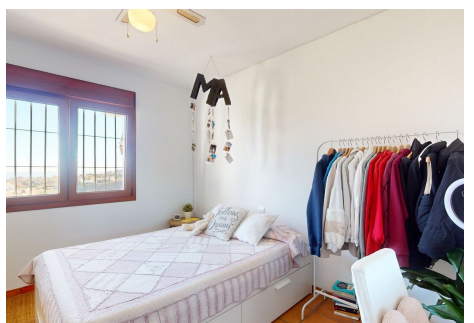
ESTATES

this area adds to the upper-level charm, complemented by a well-appointed bathroom. Outdoors, the options are plentiful—access the area through flat alleys bordered by fruit trees on the sides of the house, or by a staircase beside the main terrace. The lower level unveils a 10 x 5 m pool surrounded by a tiled area, a BBQ space under a pergola, and a practical guest apartment with a kitchenette and bathroom, doubling as an outdoor escape. Beyond its aesthetic appeal, the villa embraces eco-friendly living with photovoltaic solar panels, ensuring minimal utility bills. Smooth walls and handcrafted terracotta slabs enhance the authentic charm of the space. Describing this villa is a modest attempt to convey its allure; however, words can only scratch the surface. As a seasoned expert in Benalmádena's villa market, I encourage you to witness the charm firsthand. This property isn't just a house; it's a sensible investment in a lifestyle that appreciates over time. Don't miss the chance to make this distinctive villa yours—schedule a viewing now and step into a world of refined comfort. Your ideal home awaits.



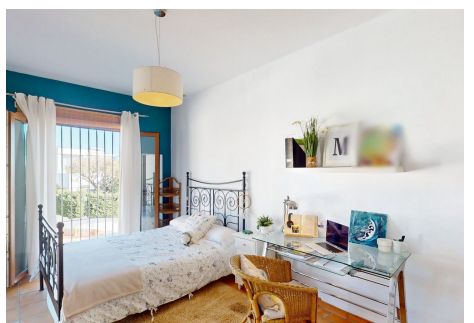
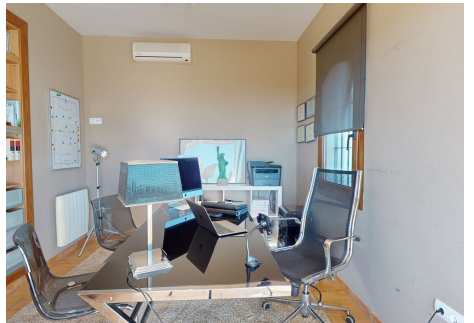
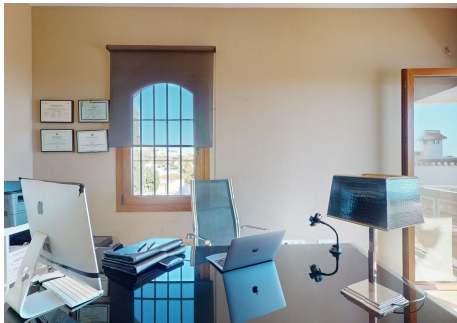
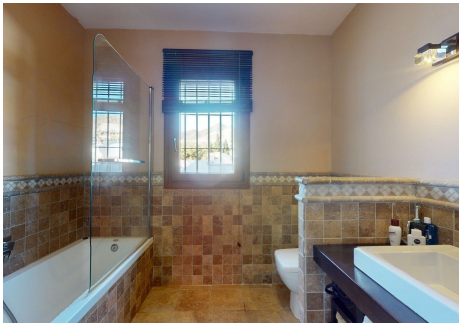
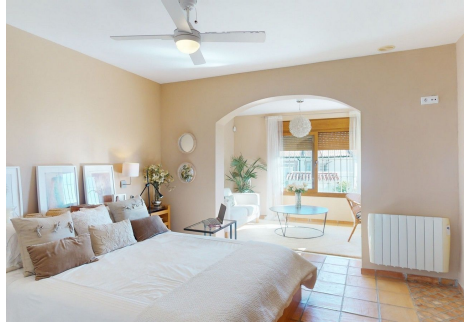
IDILIQ

ESTATES



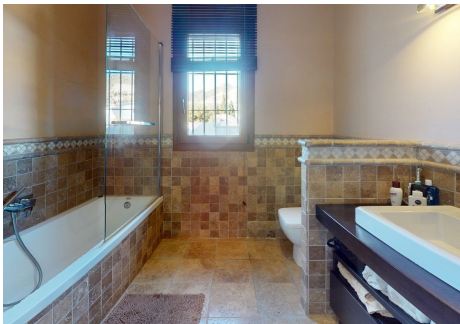
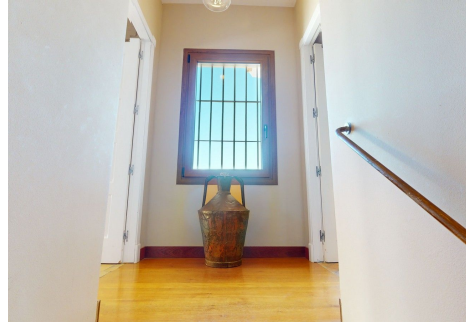
IDILIQ

ESTATES



IDILIQ

ESTATES



IDILIQ

ESTATES

