



R4803985

📍 La Mairena

REF# R4803985 371.175 €

BEDS

2

BATHS

2

BUILT

158 m²

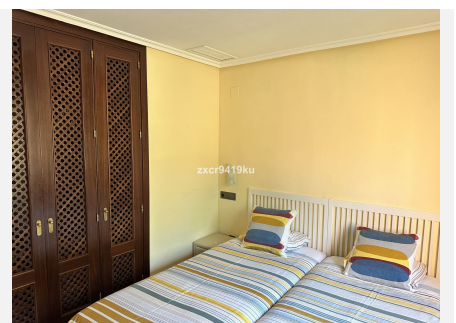
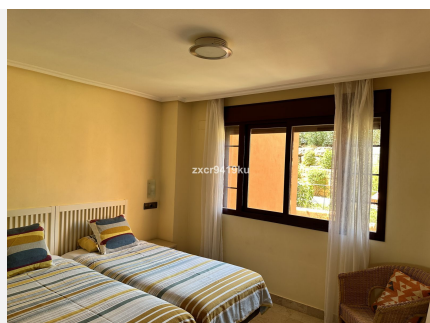
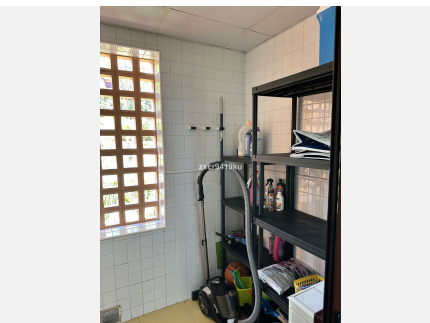
TERRACE

15 m²

Fantastic first floor south facing 2 bedroom 2 bathroom apartment with panoramic views of the mountains and sea. One of the very few South facing apartments in el Soto de Marbella. Welcome to your dream retreat in La Mairena, where tranquillity meets elegance and offers the perfect blend of modern comfort and scenic beauty, this apartment promises a lifestyle of serenity and sophistication. Owners enjoy complimentary access to: Gym facilities and the possibility to unwind in the soothing sauna after a long day. Padel and Tennis court. Fantastic Clubhouse restaurant and 9 hole golf course. La Mairena is renowned for its tranquility, natural beauty, and panoramic views of the Mediterranean coastline. Nestled in the hills above Elviria, Marbella, it offers a serene escape while still being within easy reach of Marbella's vibrant lifestyle and culinary diversity. Don't miss out on this exceptional opportunity to own a piece of paradise in La Mairena! Contact us today to schedule a viewing.

IDILIQ

ESTATES



IDILIQ

ESTATES

