



R4309348

📍 Casares

REF# R4309348 160.000 €

BEDS

3

BATHS

2

BUILT

196 m²

TERRACE

20 m²

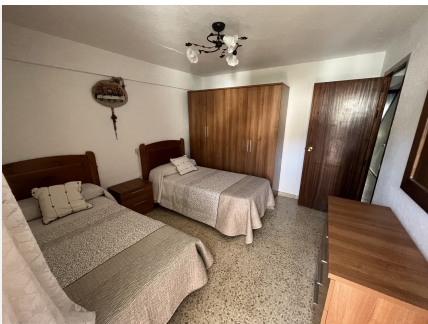
House with the possibility of making 2 houses a few minutes walk from the town square. The most remarkable thing about this house, apart from its size, is that it has access by car through 2 streets. The house is now distributed in 2 areas. The house that can be inhabited since it was a residence throughout the life of a family. And the house that was used as a workshop and was never reformed. At the top, the main house, has access by car from Calle Juan Cerron and has a comfortable living room at the entrance that gives access to the large kitchen of the house. The kitchen has access to a balcony and a toilet. This terrace has very nice views of the town, the mountains and the sea. On the first floor there are 2 comfortable double bedrooms and a full bathroom. One of the bedrooms has access to a terrace and has very nice views of the sea and mountains and the town. On the top floor of the house, there is a very large room of about 18m² and a laundry area. This area can easily be converted into an en-suite bedroom with access to the beautiful roof terrace of the house. The roof terrace enjoys the same views as the two terraces but its comfortable size of 20m² stands out. This house is habitable, although it needs some modernization and has a lot of natural light, large windows and comfortable spaces. The old house, used as a workshop, communicates from the living room of the house through some wooden stairs. This one built on 2 floors with high ceilings and large windows and communicates with a street that is accessible by car where you can

+34 951 123 083 | +44 (0)330 179 8687 | info@idiliqestates.com Local 28, Edificio D, Centro de Negocios Puerta de Banús, N-340, Km 175, 29660 Nueva Andlucia

IDILIQ

ESTATES

also park. It is an area that needs complete reform although it has water and electricity. At the entrance of this area there is a small area that can be used as a terrace. Although the house is made up of two areas, it can become a single large house or 2 apartments as it belongs to the same building. Keys are available in the office so a viewing can be easily arranged to appreciate all the possibilities you have when buying this great home.



IDILIQ

ESTATES

