

IDILIQ

ESTATES



R4741801

 Benalmadena Costa

REF# R4741801 245.000 €

BEDS

2

BATHS

1

BUILT

69 m²

TERRACE

11 m²

Middle Floor Apartment, Benalmadena Costa, Costa del Sol. 2 Bedrooms, 1 Bathroom, Built 69 m², Terrace 11 m². Setting : Close To Golf, Close To Town, Urbanisation. Orientation : South East. Condition : Good. Pool : Communal, Children`s Pool. Climate Control : Pre Installed A/C. Views : Sea, Mountain, Panoramic. Features : Covered Terrace, Lift, Fitted Wardrobes, Near Transport, Private Terrace, Paddle Tennis, Access for people with reduced mobility, Courtesy Bus. Furniture : Not Furnished. Kitchen : Fully Fitted. Security : Gated Complex, Entry Phone. Parking : Underground, Garage, Covered, Private. Utilities : Electricity, Gas. Category : Reduced.

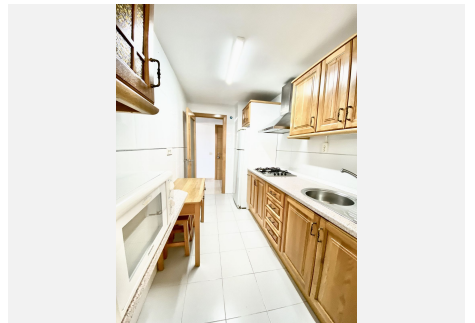
IDILIQ

ESTATES



IDILIQ

ESTATES



IDILIQ

ESTATES

