



R5420239

📍 Málaga Este

REF# R5420239 1.650.000 €

BEDS

4

BATHS

3.5

BUILT

283 m<sup>2</sup>

PLOT

304 m<sup>2</sup>

TERRACE

11 m<sup>2</sup>

Designer semi-detached house located in one of the most exclusive residential areas of East Málaga, Cerrado de Calderón. The property forms part of an exclusive gated community of just 20 homes, featuring a communal swimming pool and beautifully maintained shared gardens. Boasting elegant contemporary architecture, this sophisticated corner semi-detached home enjoys a privileged position within the development, offering a larger private garden, greater privacy, and abundant natural light throughout the day. The property also benefits from magnificent open views of both the sea and the mountains, creating a peaceful and pleasant setting that perfectly complements the Mediterranean lifestyle.

The property features a practical and modern layout distributed across three floors. The main floor comprises a spacious and bright living area of approximately 36 sqm, along with an open-plan designer kitchen. This level also includes a guest toilet and staircase access to both the upper and lower floors. The upper floor offers three generously sized bedrooms, including a master suite with an en-suite bathroom, as well as an additional separate bathroom. From this floor, there is access to a fantastic rooftop solarium terrace with spectacular panoramic views. The lower floor features an additional room with natural light and

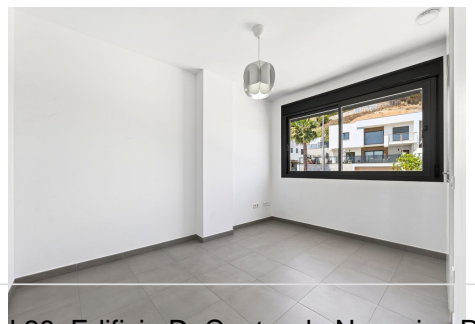
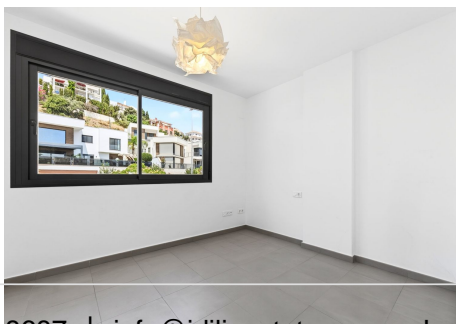
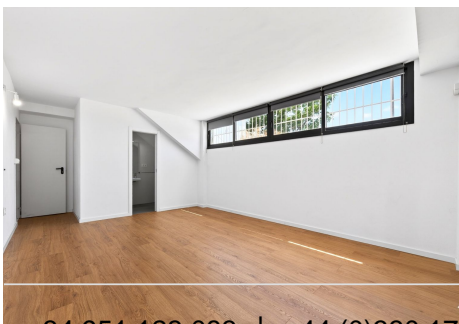
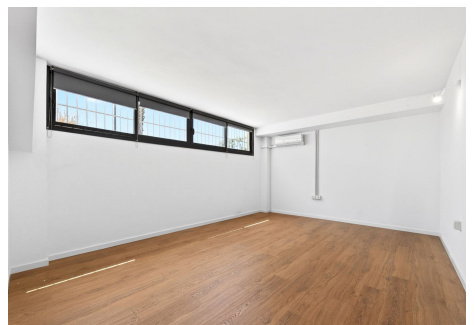
# IDILIQ

ESTATES

a full bathroom, making it ideal as a guest bedroom, home office, or independent living space. This level also provides direct access to the private enclosed garage with space for two vehicles.

The property is finished to a high standard and features a fully equipped designer kitchen with brand-new high-end Bosch and Miele appliances and a premium Krypton® countertop by Porcelanosa, a mineral solid surface in matte white finish known for its durability, hygienic properties, and seamless appearance. It is equipped with an efficient aerothermal climate control system providing both heating and cooling, ensuring maximum comfort throughout the year in every room. High-quality Cortizo aluminium exterior carpentry with thermal break technology and safety glazing provides excellent thermal and acoustic insulation. Carefully selected finishes and premium materials throughout the home enhance its contemporary design, functionality, and overall comfort. Other features: pre-installation for a swimming pool in the garden, fibre-optic internet, alarm system with security cameras, electric vehicle charging point in the garage.

Situated in Cerrado de Calderón, an area renowned for its exceptional quality of life, prestigious international schools, and excellent sports facilities, the property also benefits from excellent motorway connections and close proximity to a wide range of services and amenities. Málaga's historic city centre is just a 10-minute drive away.



# IDILIQ

ESTATES



# IDILIQ

ESTATES

