



## MIDDLE FLOOR APARTMENT 3 BEDROOMS 2.5 BATHROOMS IN MÁLAGA CENTRO

 Málaga Centro

REF# R5223742 2.800.000 €

BEDS

3

BATHS

2.5

BUILT

210 m<sup>2</sup>

TERRACE

5 m<sup>2</sup>

Spectacular luxury apartment located right on Paseo de Reding, in a unique building that forms part of the iconic Casas de Félix Sáenz, an architectural complex from the early 20th century. Its design, attributed to the renowned architect Fernando Guerrero Strachan, combines Neo-Plateresque and Mudejar elements, standing out for its towers and sea-facing viewpoints.

This impressive residence skillfully blends the classic elegance of its original architecture with a serene and luminous contemporary interior design. High ceilings, original moldings, and large windows harmonize with pure-lined furnishings, noble materials, and a carefully curated selection of lighting fixtures, creating an atmosphere that is both sophisticated and natural.

The property is laid out on a single floor and features three bedrooms, two bathrooms, and a guest toilet. On the left side lies the heart of the home: a continuous space integrating the living room, dining area, and kitchen, where natural light enhances everyday life. Next to the living room, a cozy workspace and a reading

+34 951 123 083 | +44 (0)330 179 8687 | [info@idiliqestates.com](mailto:info@idiliqestates.com) Local 28, Edificio D, Centro de Negocios Puerta de Banús, N-340, Km 175, 29660 Nueva Andalucía

# IDILIQ

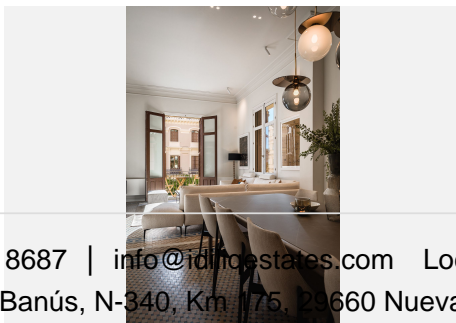
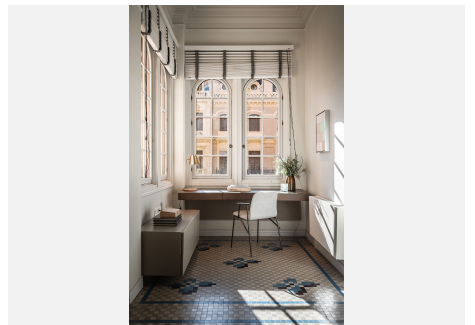
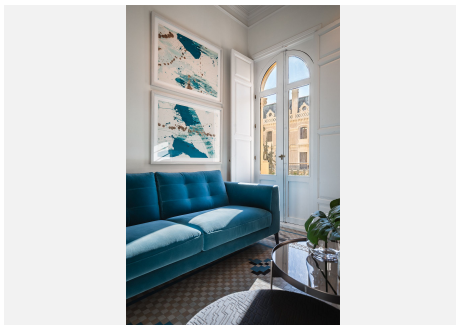
## ESTATES

nook have been arranged, adding warmth and functionality. The night area houses three bedrooms. The master bedroom includes an en-suite bathroom and a walk-in closet, while the other two share an additional bathroom. The central hallways gently connect various areas, creating a sense of balance and flow.

The materials and finishes reflect a careful combination of tradition and contemporary comfort. The walls feature artisanal lime stucco, microcement, and eco-friendly paint by Farrow & Ball. The original Nolla mosaic flooring, meticulously restored, is preserved throughout most of the property, adding character and aesthetic coherence. The doors and windows from 1922 have been recovered, maintaining the original woodwork and updating hardware and mechanisms to ensure functionality.

The bathrooms include pieces by Villeroy & Boch and brushed gold fittings by Toro Bath, alongside sober-lined furniture by Inbani. The lighting, designed by Eflux, discreetly enhances the architecture, while furniture by Pianca, fabrics by Casamance, and hand-blown glass fixtures by Bomma complete a setting that combines history, design, and comfort with balance and naturalness.

Located in one of the most sought-after areas of Málaga and surrounded by all kinds of services, this property, the epitome of luxury and elegance, represents an excellent opportunity for those seeking quality of life in the heart of the city, offering the perfect combination of spaciousness, comfort, and an unbeatable location.

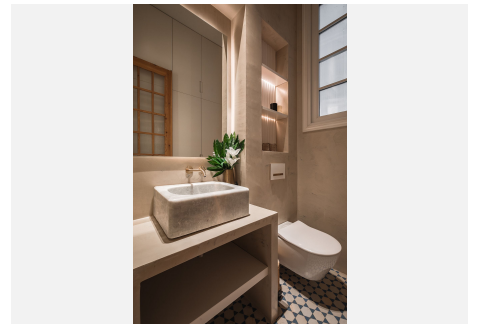
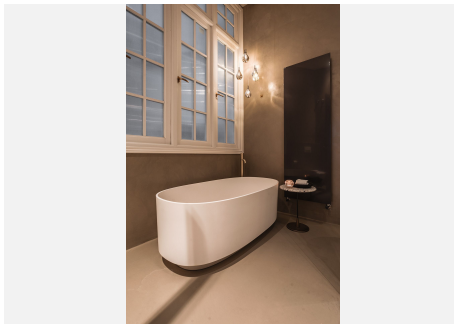
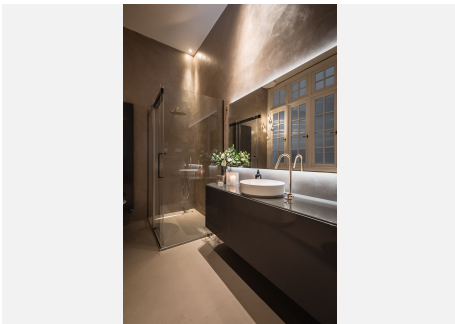
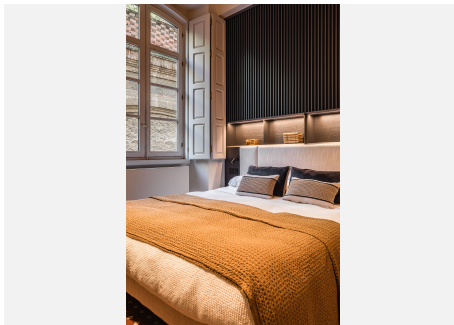
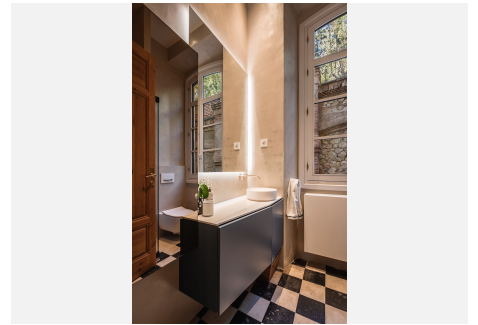
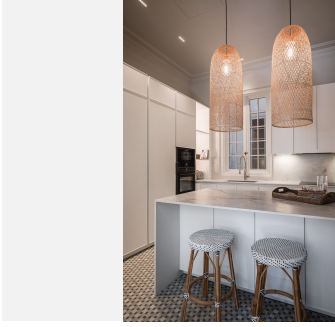


+34 951 123 083 | +44 (0)330 179 8687 | [info@idilicstates.com](mailto:info@idilicstates.com) Local 28, Edificio D, Centro de Negocios Puerta de Banús, N-340, Km 175, 29660 Nueva Andalucía



# IDILIQ

ESTATES



# IDILIQ

ESTATES

