



R5183857

📍 Punta Chullera

REF# R5183857 549.950 €

BEDS

5

BATHS

4.5

BUILT

274 m²

TERRACE

125 m²

Spacious 5-Bedroom Townhouse with Sea Views in La Paloma, Manilva

This bright four-level townhouse offers a spacious, comfortable home filled with natural light ideal for family living or as a second residence. With five bedrooms and four full bathrooms, plus a guest toilet, every space has been thoughtfully designed for functionality and comfort.

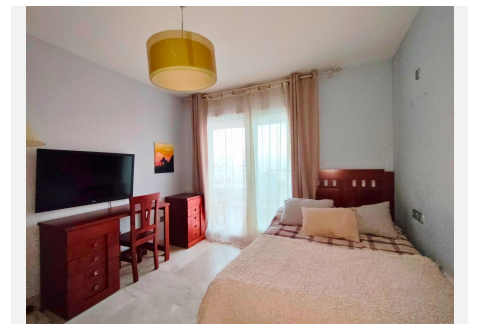
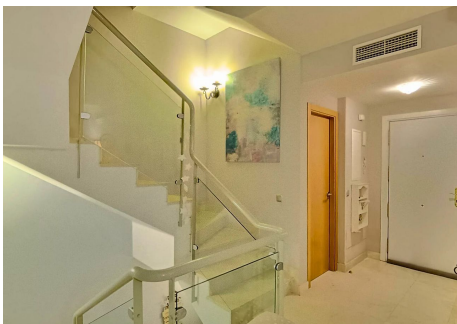
The main floor features a welcoming living area that seamlessly combines the lounge, dining room, and open-plan kitchen, with direct access to a covered terrace and private garden, perfect for relaxing or enjoying time outdoors year-round, all while enjoying beautiful sea views. On the first floor, you'll find three bedrooms: one with an en-suite bathroom and two that share a full bathroom. The top floor is dedicated to the master bedroom, which includes an en-suite bathroom and access to a private solarium with stunning sea views. The basement, accessible directly from the private garage with space for two vehicles, includes a multipurpose room and an additional bedroom, ideal for guests, a playroom, or a home office.

IDILIQ

ESTATES

Notable features include individually controlled air conditioning in each room and underfloor heating in some of the bathrooms. The residential complex also offers a communal pool and gym, perfect for leisure and well-being.

Located in La Paloma/ Bahía de las Rocas in Manilva, this home sits in a peaceful, well-connected residential area just minutes from Sotogrande, golf courses, beaches, and essential services, with easy access to other towns along the Costa del Sol. A home designed for comfort and easy living, perfect to enjoy all year round.



IDILIQ

ESTATES



IDILIQ

ESTATES

