



R5009560

📍 Benahavís

REF# R5009560 1.595.000 €

BEDS

4

BATHS

5

BUILT

335 m²

PLOT

1159 m²

TERRACE

70 m²

An opportunity to purchase a traditional villa set in an ideal location which has been meticulously maintained.

Set in the most popular area, between El Paraiso and Atalaya golf courses, with easy access to the A7, this property has an appeal for everyone, from families to golfers, for full time living or a beautiful second home. Nothing quite like this property in this area, at this price!!

The villa is of an attractive design, with an entrance hall leading to the living areas set on slightly different levels.

Panoramic windows from both the dining room and lounge, brings the garden indoors, where the sun radiates and light abounds.

A partially open kitchen is fitted with good quality appliances is accessed from the dining area.

On the same floor, there is a guest suite, with ensuite bathroom and double doors leading to the terrace and the beautiful lush garden.

From the entrance hall there are 2 steps leading to the west side of the house, where there are two double bedrooms, each with their own en suite bathrooms, also a visitors cloakroom.

In front of the entrance hall, there is a sizeable room for multi use, such as a study, a second lounge,

+34 951 123 083 | +44 (0)330 179 8687 | info@idiliqestates.com Local 28, Edificio D, Centro de Negocios Puerta de Banús, N-340, Km 175, 29660 Nueva Andlucia

IDILIQ

ESTATES

cinema room, or even a 5th bedroom.

From here stairs lead to the basement where there is a superb laundry room, with solid door access to the garage.

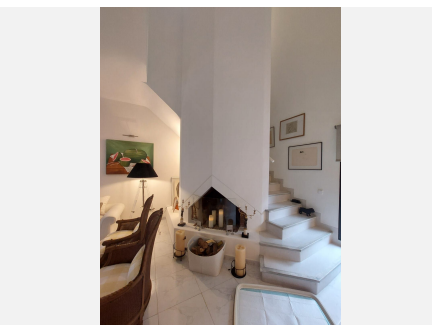
The main salon has an attractive fireplace with chimney. It also has a partially tall ceiling, making the room luminous and spacious, with stairs leading to the master suite, dressing area and en suite bathroom.

The south facing patio doors from this bedroom lead to a dual level terrace, where a plunge pool/ jacuzzi could possibly be added to relax and enjoy the views.

The garage is currently for one car but there is parking space inside the gates for 3 cars.

The lush garden is to the side of the house, showing its large pool, which is totally secluded.

This attractive villa probably won't be around for long, as it is in a prime location, and has a bonus of having **NO COMMUNITY FEES!**



+34 951 123 083 | +44 (0) 330 179 8687 | info@idiliqestates.com | Local 28, Edificio D, Centro de Negocios Puerta de Banús, N-340, Km 175, 29660 Nueva Andalucía

IDILIQ

ESTATES

