

IDILIQ

ESTATES



R4940755

📍 Cancelada

REF# R4940755 875.000 €

BEDS

3

BATHS

2

BUILT

320 m²

PLOT

471 m²

TERRACE

21 m²

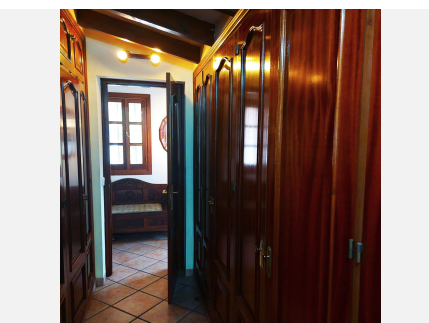
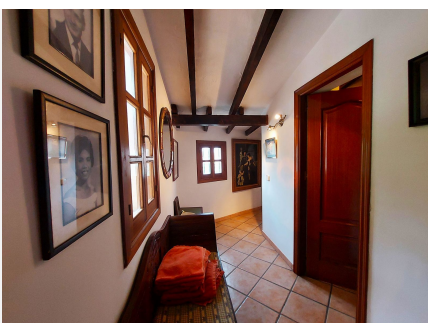
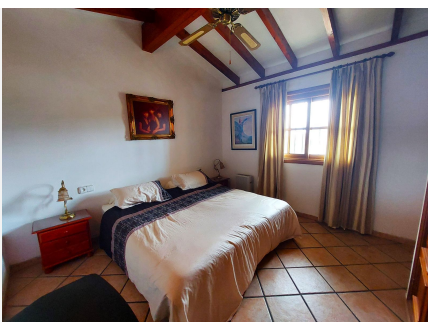
We offer this attractive Andalusian style house set on two floors, only steps away from the beach!! Close to Cancelada village, with nearby supermarkets and restaurants, schools, church, and a gym. This privileged area is renowned for its golf courses, and there are many close by. The house is only minutes from the 6* Villa Padierna Hotel, which boasts 2 Championship 18 hole golf courses. An active Tennis club is also on the doorstep. To complete the choice of activities, a riding stables is situated between the house and the beach. Puerto Banus is but 10 mins away, with Estepona Marbella are both within a 15 minute drive. This lovely traditional house comprises of 3 bedrooms two bathrooms and a downstairs guest cloakroom. Spacious lounge with fireplace, with raised dining area, which has easy access to the fitted kitchen. The lounge has many features creating the feeling of being in a true Spanish home, where wood has been cleverly used in the coving, as well as some sensitively placed beams. From the lounge, doors lead to a large covered terrace, which almost spans the width of the house. The kitchen is well proportioned as the vendor loves to cook, so it has been designed well for this purpose. A door leads from the kitchen to a small courtyard which gives access to a gate leading to the parking area at the rear entrance to the house, where there is open parking for several cars. Also on the ground floor, there is a storage room, which also houses the washer and dryer. A wide and easy rising staircase leads to the first floor hallway, also with an attractive

+34 951 123 083 | +44 (0)330 179 8687 | info@idiliqestates.com Local 28, Edificio D, Centro de Negocios Puerta de Banús, N-340, Km 175, 29660 Nueva Andlucia

IDILIQ

ESTATES

beamed ceiling. Here, there are 3 bedrooms. Two of the double bedrooms share a guest shower room . The master suite has a large dressing area with many made to measure wooden wardrobes and en-suite bathroom with corner bath and separate walk- in shower, very much in character with the house. The bedroom area is spacious and light, with south facing windows overlooking the lawned garden and beautiful mature tall trees. This is an opportunity to purchase a lovely beachside house, which really is close enough to hear the sea!



IDILIQ

ESTATES

