



PENTHOUSE DUPLEX 2 BEDROOMS 2 BATHROOMS IN SOTOGRANDE ALTO

 Sotogrande Alto

REF# R4406881 695.000 €

BEDS

2

BATHS

2

BUILT

480 m²

TERRACE

316 m²

Situated within the luxurious urbanization of Hacienda de Valderrama, positioned adjacent to the esteemed Valderrama golf course in Sotogrande, a truly exceptional property awaits. This elegant residence captures the essence of sophisticated living and offers an unparalleled lifestyle.

Boasting a prime location next to the renowned Valderrama Golf Club of Sotogrande, this apartment presents a unique opportunity. With a serene outlook onto the beautiful gardens, Sierra Bermeja mountain range and the countryside.

The property is thoughtfully designed across four levels, each serving a distinct purpose. The uppermost floor unveils a lavish master suite, complete with an ensuite bathroom, and a sprawling terrace that gazes over the exquisitely manicured gardens and pool area within the urbanization. Just below, a spacious living area flows seamlessly to the main terrace, connecting indoor and outdoor living spaces. On this level, the second bedroom, also ensuite, enjoys terrace access with vistas toward the beautifully landscaped

+34 951 123 083 | +44 (0)330 179 8687 | info@idiliqestates.com Local 28, Edificio D, Centro de Negocios Puerta de Banús, N-340, Km 175, 29660 Nueva Andlucia

IDILIQ

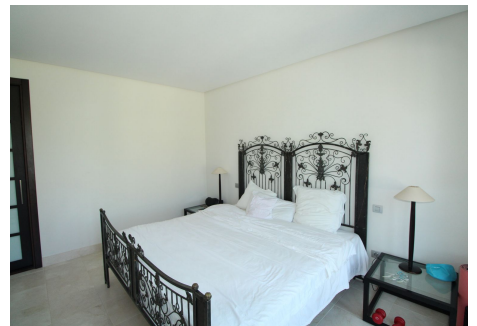
ESTATES

urbanization gardens. The living area effortlessly transitions to a high-end kitchen, fully equipped and paired with a small adjacent laundry area. Notably, the apartment is equipped with a private elevator.

Comprising an expansive living space, this apartment stands as a testament to quality and craftsmanship. Remarkably, it includes a large private garage and a dedicated storage room. The residence is meticulously appointed with superior materials and high-end fixtures. Offering both comfort and opulence, the property features air conditioning, underfloor heating, a fully equipped kitchen, marble flooring, security entry, and round-the-clock service.

The first floor introduces an elegant entrance foyer, setting a refined tone for the residence. The lower level provides access to a substantial garage capable of accommodating 3-4 vehicles, a highly coveted feature. The basement level further offers a storage room and an additional adaptable space, perfect for tailoring the property to individual needs.

Within an exclusive urbanization, this residence exemplifies meticulous construction quality and an unwavering dedication to fine detailing. Experience the pinnacle of luxury living in Hacienda de Valderrama, where opulence and elegance harmonize seamlessly in an extraordinary setting.



+34 951 123 083 | +44 (0)330 179 8687 | info@idiliqestates.com Local 28, Edificio D, Centro de Negocios Puerta de Banús, N-340, Km 175, 29660 Nueva Andlucia

IDILIQ

ESTATES



IDILIQ

ESTATES

