



R5321377

📍 Nueva Andalucía

REF# R5321377 1.695.000 €

BEDS

3

BATHS

4

BUILT

245 m²

TERRACE

80 m²

Newly refurbished to the highest standard, this sophisticated 3-bedroom, 3-bathroom corner penthouse combines clean Scandinavian aesthetics with panoramic views of the Mediterranean. Arranged over two levels, the residence is bright, welcoming, and designed for relaxed coastal living.

The entrance level features a seamless open-concept layout where the kitchen, dining, and living areas connect effortlessly to a spacious south-facing terrace — ideal for sunny breakfasts and evening gatherings beneath the stars.

The kitchen is finished with refined Italian marble worktops and includes a custom-built wine bar. A guest bedroom with en-suite bathroom and private terrace completes this floor, providing comfort and privacy for visitors.

Upstairs, two additional en-suite bedrooms each open onto their own terraces.

The primary suite serves as a private sanctuary, offering a walk-in wardrobe and an expansive terrace with a plunge pool, outdoor shower, and uninterrupted sea views — the perfect place to unwind.

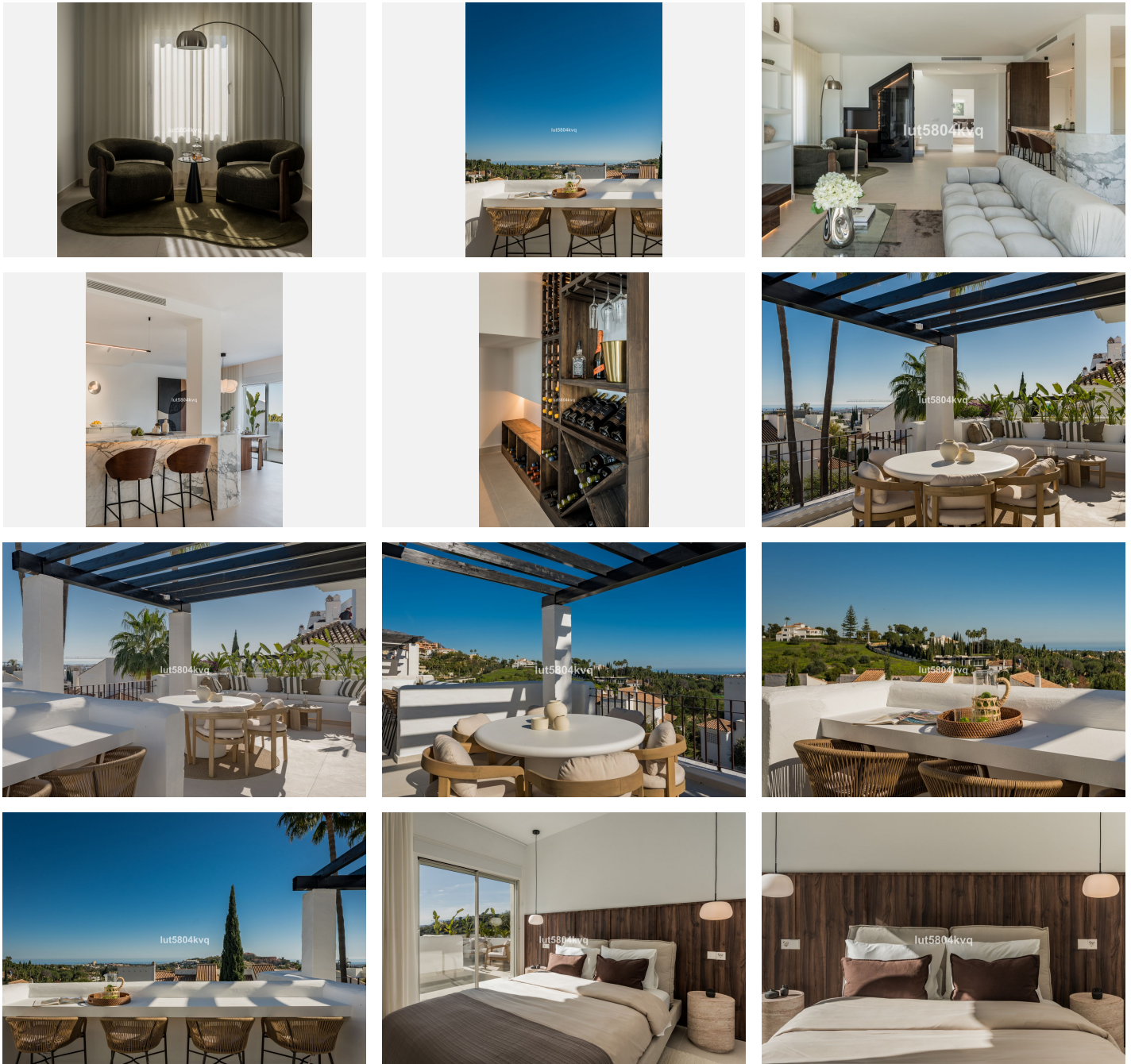
+34 951 123 083 | +44 (0)330 179 8687 | info@idiliqestates.com Local 28, Edificio D, Centro de Negocios Puerta de Banús, N-340, Km 175, 29660 Nueva Andalucía

IDILIQ

ESTATES

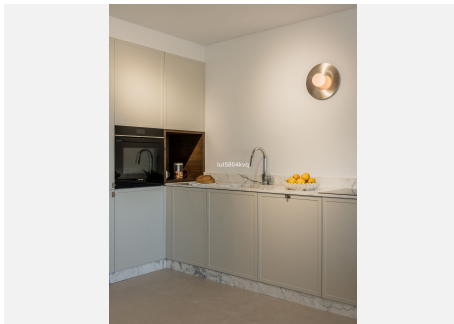
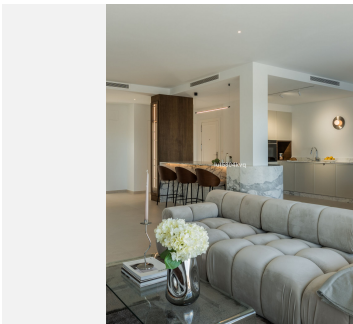
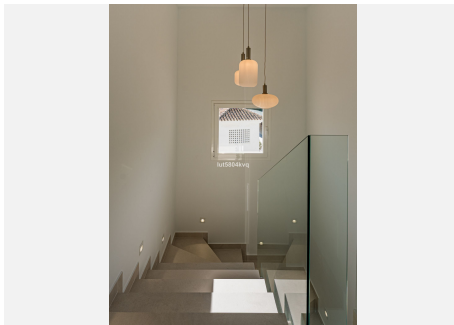
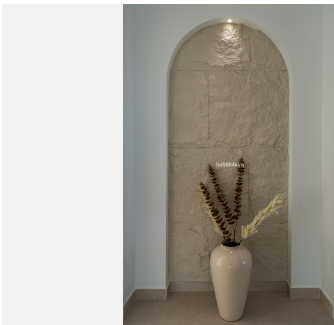
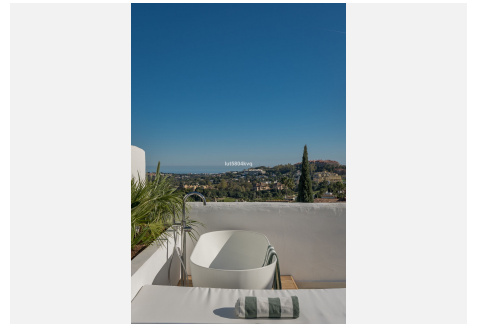
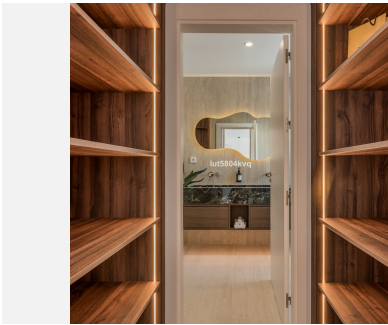
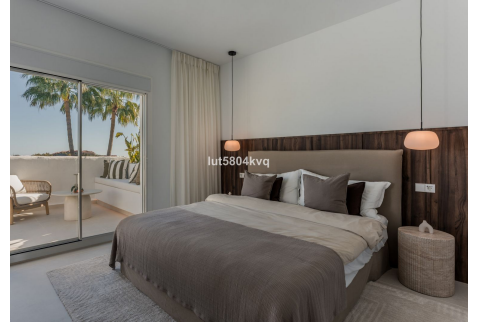
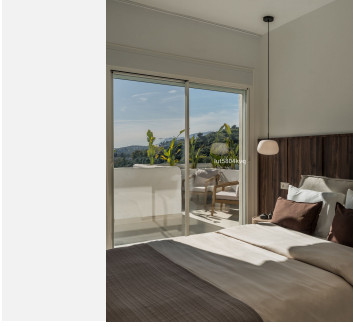
Located within a secure gated development featuring beautifully maintained gardens and a communal swimming pool, the property also benefits from one private parking spaces.

All of this just moments away from renowned golf courses and excellent dining options.



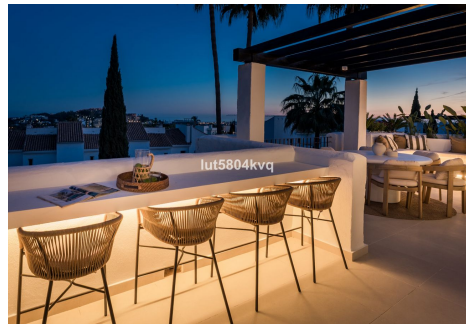
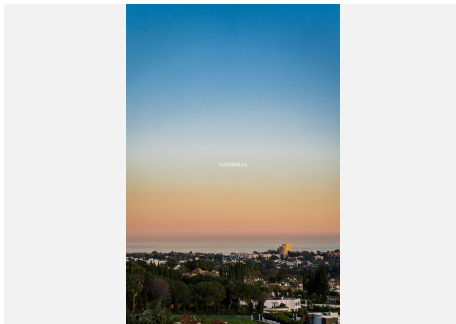
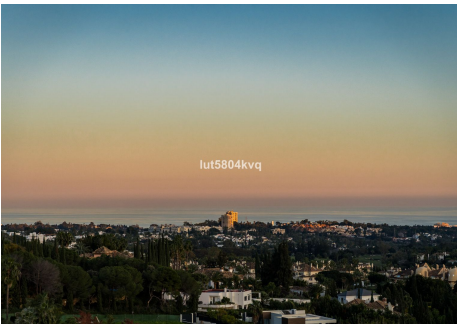
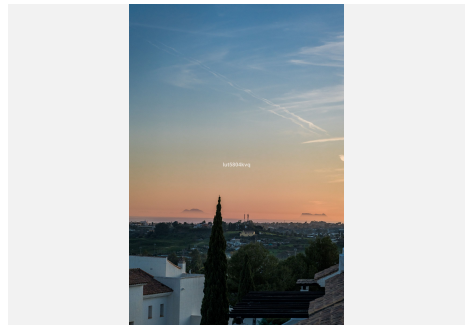
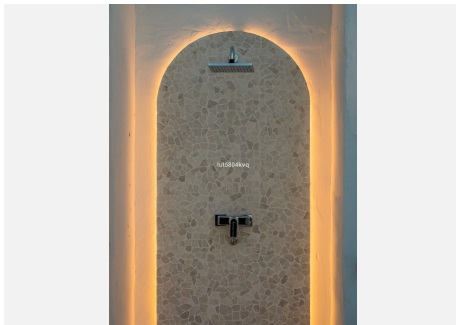
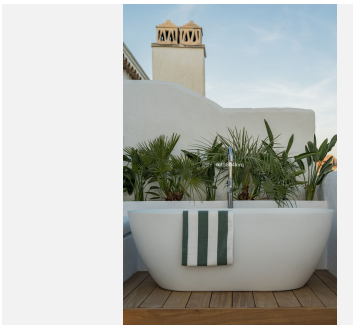
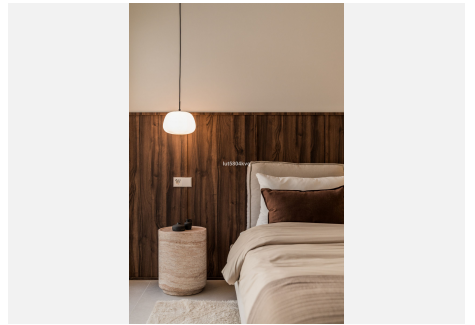
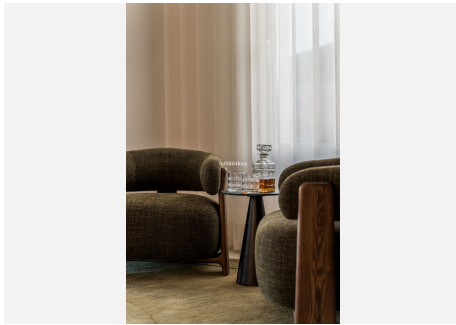
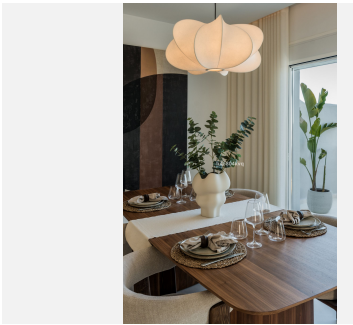
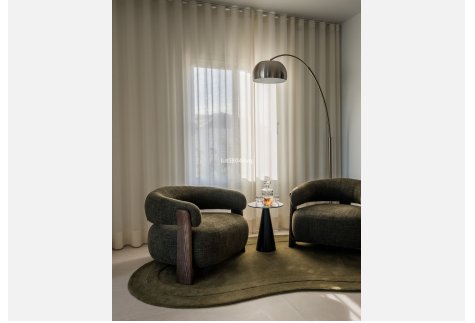
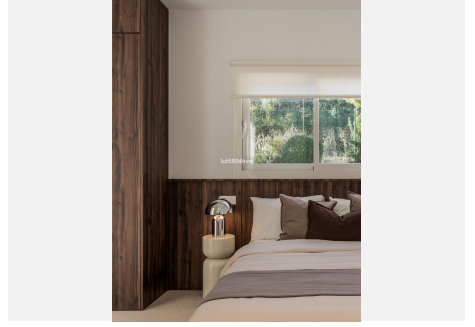
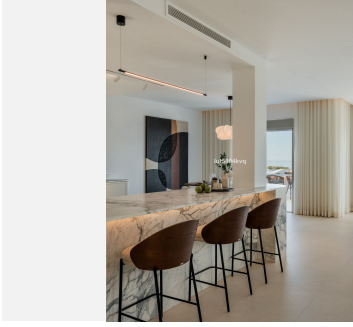
IDILIQ

ESTATES



IDILIQ

ESTATES



IDILIQ

ESTATES

