



R4896076

 Benalmadena Costa

REF# R4896076 485.000 €

BEDS

3

BATHS

2

BUILT

118 m²

TERRACE

43 m²

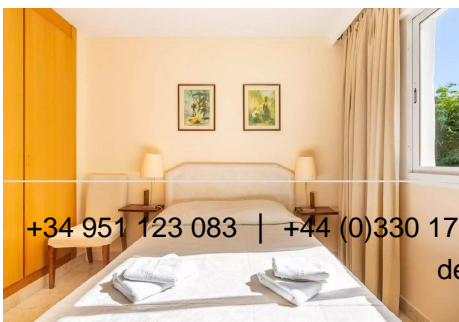
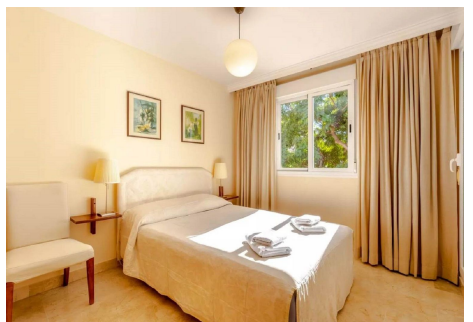
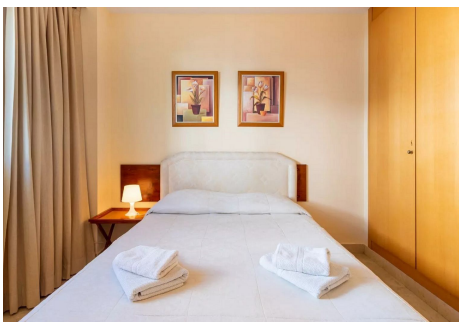
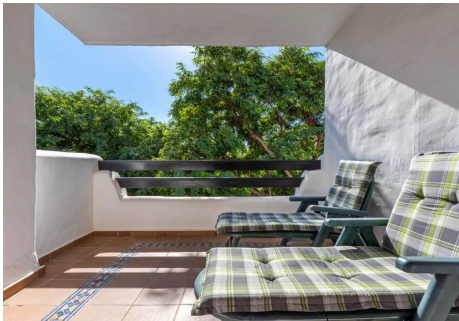
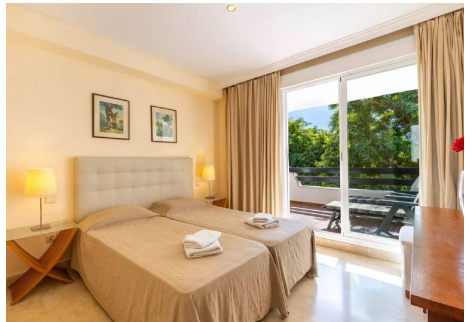
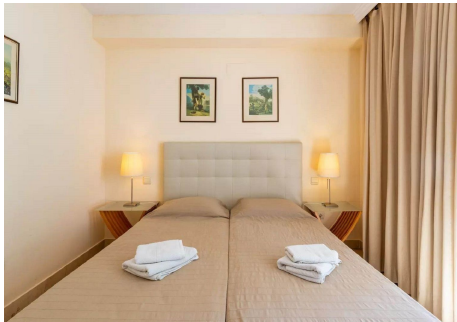
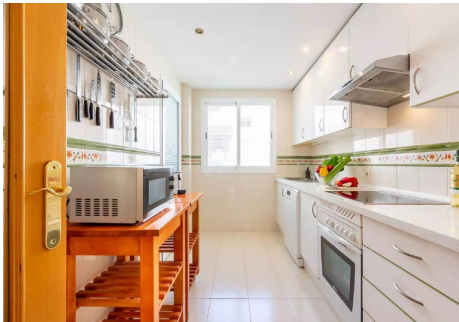
Bright magnificent 3 bedroom, 2 bathroom apartment located in the sought after Atalaya Golf urbanization, in the area of Nueva Torrequebrada, for those looking for a home that combines spaciousness, comfort and an unbeatable location. This flat stands out for its generous space and natural luminosity. Upon entering, you will find an elegant entrance hall with a wardrobe that leads to a spacious square-shaped living/dining room, ideal for enjoying time with family and friends. From here, you access a large terrace, perfect for relaxing and enjoying the Mediterranean climate. The fully fitted and equipped kitchen has a practical utility room, making day-to-day tasks easier. The distribution includes two double bedrooms with fitted wardrobes, a complete bathroom, and the master bedroom with large fitted wardrobes, en-suite bathroom with window, and its own private terrace making it a true retreat. This fantastic property comes with an underground parking space and a large storage room with good storage capacity. The building has a lift that connects the flat to the garage floor. The complex, designed in a charming Mediterranean village style, is an oasis of tranquillity and security. Enjoy its well-kept communal gardens, three swimming pools, sauna, gymnasium and leisure room, all designed for your wellbeing. In addition, the location is unbeatable: just a few steps away you will find bus stops, shops, bars, international restaurants and, of course, the beach. Don't miss the opportunity to live in a privileged environment, surrounded by nature and with all amenities at your

+34 951 123 083 | +44 (0)330 179 8687 | info@idiliqestates.com Local 28, Edificio D, Centro de Negocios Puerta de Banús, N-340, Km 175, 29660 Nueva Andlucia

IDILIQ

ESTATES

fingertips. This flat in Atalaya Golf is more than a property; it is a lifestyle, contact us for more information and to arrange a viewing!



+34 951 123 083 | +44 (0)330 179 8687 | info@idiliqestates.com - Local 28, Edificio D, Centro de Negocios Puerta de Banús, N-340, Km 175, 29660 Nueva Andalucía

IDILIQ

ESTATES

