



R4824850

 Benalmadena Pueblo

REF# R4824850 740.000 €

BEDS

5

BATHS

5

BUILT

200 m<sup>2</sup>

TERRACE

120 m<sup>2</sup>

Spectacular semi-detached house located in a residential area with easy access to the motorway. Completely renovated with a very modern design and the best qualities. The property has been divided into 2 houses that can be used both together and separately as it has completely independent entrances. The plot has 320 m<sup>2</sup> and the house 200 m<sup>2</sup> built which are distributed as follows: First house (Ground Floor): - Large living room with fully equipped open kitchen and sea views. - Master bedroom with dressing room and en-suite bathroom. - Toilet. - Two terraces: one with a chill out area and the other with a heated pool. This terrace also has a bathroom and a living room with an equipped and heated kitchen. First Floor: - Large bedroom with a full en-suite bathroom, with a bathtub and shower. Basement: - Currently used as an office. Second House: - Large living room with a fully equipped kitchen. - Two bedrooms. - Full bathroom with a shower. The property has two parking spaces with electric charger installation and a large storage room. **DON'T MISS THIS OPPORTUNITY AND VISIT IT!!** In compliance with the Decree of the Junta de Andalucía 2182005 of October 11, the client is informed that notary, registry, ITP and other expenses inherent to the purchase are not included in the sale price. The real estate agency fees are included.

# IDILIQ

ESTATES



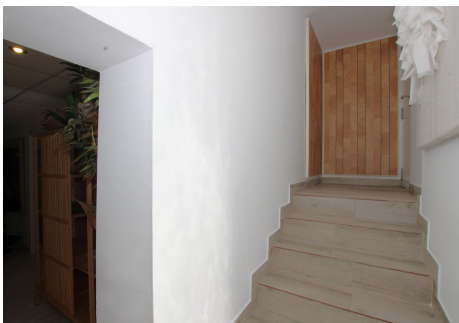
# IDILIQ

ESTATES



# IDILIQ

ESTATES



# IDILIQ

ESTATES



# IDILIQ

ESTATES

