



R5074048

📍 Elviria

REF# R5074048    399.000 €

BEDS

2

BATHS

2

BUILT

115 m<sup>2</sup>

TERRACE

71 m<sup>2</sup>

## Elegant Two-Bedroom Penthouse with Breathtaking Panoramic Views in Elviria, Marbella

Perched in the uppermost block of a serene and beautifully maintained urbanisation, this bright and spacious penthouse enjoys an elevated position in the hills of Elviria, Marbella—offering sweeping panoramic views of the Mediterranean Sea, surrounding mountains, and lush fairways of the nearby golf course.

This stylish duplex apartment is thoughtfully designed for comfort and functionality. On the main level, you'll find a well-proportioned bedroom and a modern bathroom with a shower. The independent, fully equipped kitchen opens onto a generous south-facing terrace, ideal for soaking in the sun and the scenery. For those seeking an open-concept layout, the kitchen could be seamlessly integrated with the living area.

The welcoming living room flows naturally onto another expansive terrace, perfect for al fresco dining, morning coffees, or relaxing in the sun with a book or a refreshing drink. Upstairs, the master suite impresses with abundant natural light, ample space, and access to its own private terrace—framing

+34 951 123 083 | +44 (0)330 179 8687 | [info@idiliqestates.com](mailto:info@idiliqestates.com)    Local 28, Edificio D, Centro de Negocios Puerta de Banús, N-340, Km 175, 29660 Nueva Andalucía

# IDILIQ

## ESTATES

stunning views that change beautifully with the light throughout the day.

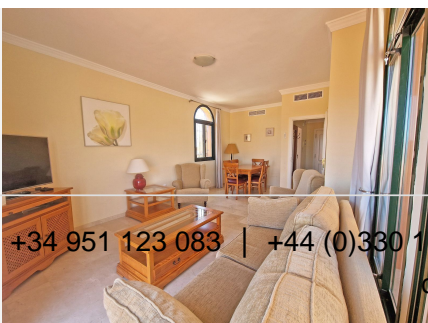
Comfort is ensured year-round thanks to centralized air conditioning and heating, while high-speed fiber optic internet allows for smooth remote work, streaming, and connectivity.

The property comes with a spacious underground parking space and a double high private storage room for added convenience.

Surrounded by mature trees and manicured gardens, the gated community boasts three communal swimming pools, with the largest located directly in front of the apartment and visible from the kitchen terrace—offering a picturesque and peaceful backdrop to daily life.

Local amenities, including supermarkets, restaurants, cafés, and essential services, are within easy reach—just a few minutes by car or a scenic walk downhill. Excellent public transport connections are also available nearby, with taxi stands and bus stops in the same area.

Elviria enjoys a privileged location just 10 km from Marbella's vibrant city center and the popular La Cañada shopping mall, and 15 km from the glamour of Puerto Banús. Golf enthusiasts will appreciate the proximity to Santa María Golf Club, just five minutes away, as well as many other renowned courses throughout the region.

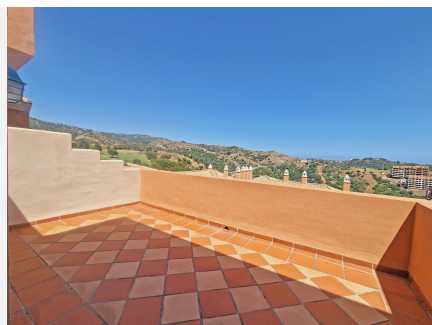
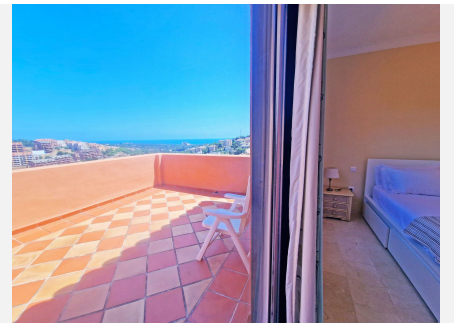


+34 951 123 083 | +44 (0)330 179 8687 | [info@idiliqestates.com](mailto:info@idiliqestates.com) Local 28, Edificio D, Centro de Negocios Puerta de Banús, N-340, Km 175, 29660 Nueva Andalucía



# IDILIQ

ESTATES





# IDILIQ

ESTATES

