



R4831561

📍 Elviria

REF# R4831561 630.000 €

BEDS

3

BATHS

2

BUILT

139 m<sup>2</sup>

TERRACE

47 m<sup>2</sup>

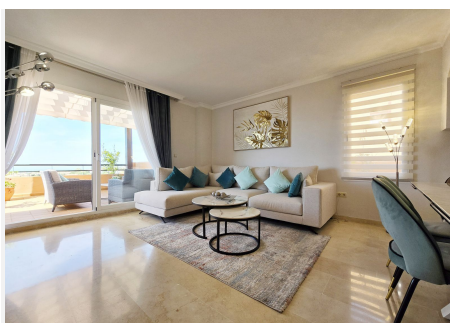
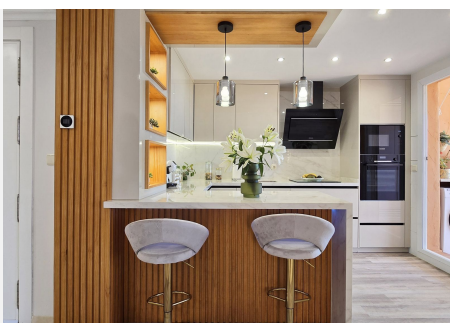
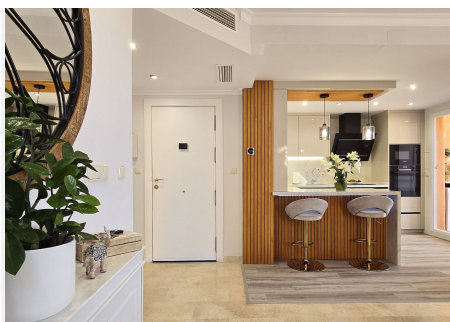
This spacious, newly renovated, tastefully redecorated, corner penthouse apartment has spectacular views from the main floor and upstairs. On the main floor, the new gourmet kitchen is functional, modern and fully integrated into the living room. From both the kitchen and the living room there is access to a large terrace; the most striking feature as soon as you enter. On this level, a bedroom at the back has a private corner terrace and there's a large bathroom. Upstairs, with a sloping ceiling, there are two more bedrooms. The larger of the two has a dressing room, dressing table and a cosy private terrace. Both share a large Travertine marble bathroom, just like the one on the main floor. Its distribution is ideal, it is filled with sun all day until sunset with all the colours of the sky, all year round, it dominates the surroundings from the height, just a short walk to the Club House, or a few minutes' drive to all the shops, services and the beach. In the basement of the building, this property has a large garage space and an adjacent storage room very close to the elevator. This magnificent flat is ideal for a family, the complex has several swimming pools, one of salt water. Magnetic keyless access is the only possible way to access the elevators, the gardens, pools, and buildings are always very well maintained. Along the Costa del Sol, Elviria is the place where peace and nature are still the leading players. Its beaches and dunes are of fine sand, forests and lush pinewoods surround the whole area, the Santa María Golf & Country Club leaves a green print with its ancient greens

+34 951 123 083 | +44 (0)330 179 8687 | [info@idiliqestates.com](mailto:info@idiliqestates.com) Local 28, Edificio D, Centro de Negocios Puerta de Banús, N-340, Km 175, 29660 Nueva Andlucia

# IDILIQ

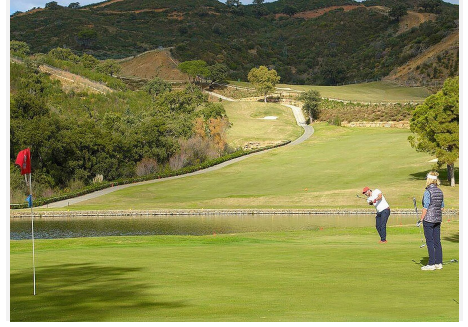
ESTATES

and beautiful fairways that climb up to the Mediterranean mountains, a land of cork oaks and centuries-old oaks. Nevertheless, such a variety of small shops, boutiques, bars, charming restaurants, medical centres, pharmacies, supermarkets and other services, hotels and beach clubs have been integrated here that Elviria raises the flag of an exclusive place. In contrast to other parts of the Costa, there is hardly any new construction activity in Elviria, the older properties are being refurbished, keeping value over time, although in the boom years of the real estate market, the better-located ones often far exceed their value.



# IDILIQ

ESTATES



# IDILIQ

ESTATES



# IDILIQ

ESTATES



# IDILIQ

ESTATES

