

IDILIQ

ESTATES



R4926811

📍 San Pedro de Alcántara

REF# R4926811 445.000 €

BEDS

2

BATHS

2

BUILT

120 m²

TERRACE

21 m²

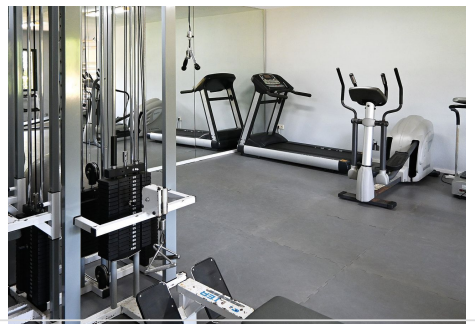
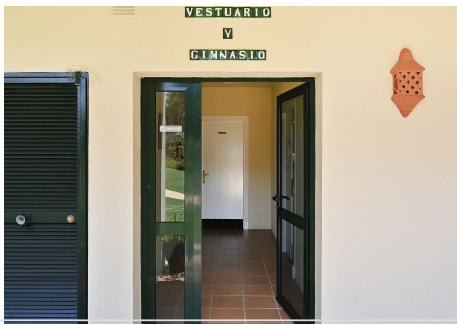
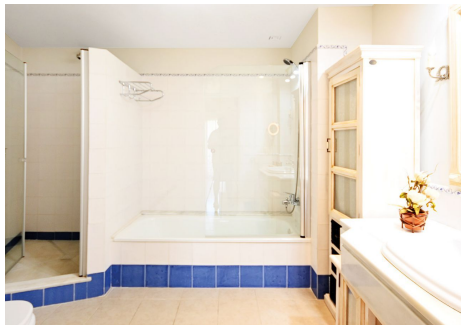
Exclusive apartment in the urbanization Guadalcántara Golf. This elegant and bright apartment is located in the prestigious Guadalcántara Golf urbanization, one of the most sought-after residential complexes in San Pedro de Alcántara. The location combines tranquility, security and proximity to the main attractions of the Costa del Sol. The modern and bright two-bedroom apartment with southwest orientation is located in the exclusive Guadalcántara Golf urbanization in Guadalmina Alta in San Pedro de Alcántara. The apartment offers an open living and dining room with access to the private terrace through large sliding doors, a fully equipped kitchen with utility room, a guest room, a guest bathroom and a master bedroom with bathroom en-suite with direct access to the terrace. The apartment has a fully equipped kitchen with high-quality appliances such as a ceramic hob, oven, dishwasher, microwave and washing machine. Air conditioning, satellite TV, fast WiFi and an underground parking space with direct elevator access provide additional comfort. You can relax and enjoy the peace and quiet on the sunny terrace, which is equipped with a seating area. The Guadalcántara Golf urbanization is a quiet and secure residential complex that is perfect for comfortable living or as a holiday residence. The urbanization offers exclusive community facilities, including three swimming pools - one per building with a separate children's pool -, well-maintained sunbathing areas with sun loungers and umbrellas and a fully equipped gym. The location of this fantastic

+34 951 123 083 | +44 (0)330 179 8687 | info@idiliqestates.com Local 28, Edificio D, Centro de Negocios Puerta de Banús, N-340, Km 175, 29660 Nueva Andalucía

IDILIQ

ESTATES

urbanization is as attractive as it is practical: in just a few minutes' walk you can reach the beaches of San Pedro and a selection of restaurants and bars. The city center with supermarkets such as Lidl and numerous other shops is also quickly accessible. In addition, renowned golf courses and the well-known towns of Puerto Banús and Marbella are in the immediate vicinity. Additional features of this apartment include hot and cold air conditioning, fitted wardrobes, a private underground parking space and a storage room. This property is an ideal choice for both personal use and as an investment property with excellent rental potential.



IDILIQ

ESTATES

