



R5164726

📍 Guadalmina Alta

REF# R5164726 930.000 €

BEDS

4

BATHS

4

BUILT

220 m<sup>2</sup>

TERRACE

150 m<sup>2</sup>

Exclusive Duplex Penthouse on the Front Line of Golf – Guadalmina Alta

Discover this elegant and spacious 370 m<sup>2</sup> duplex penthouse, located in a privileged corner on the front line of the Real Club de Golf Guadalmina. Its south-west orientation guarantees exceptional luminosity and impressive views of the sea and the mountains.

Located in an exclusive gated residential complex, this home offers tranquility, security and an unparalleled environment, just 3 km from the beach and very close to the Guadalmina shopping center.

Distribution and characteristics:

4 rooms | 4 bathrooms | 4 terraces (150 m<sup>2</sup> in total) with panoramic views of the golf, the sea and the mountains.

Independent kitchen | ? Gas Heating and Pre-installation of air conditioning | 1 parking space

+34 951 123 083 | +44 (0)330 179 8687 | [info@idiliqestates.com](mailto:info@idiliqestates.com) Local 28, Edificio D, Centro de Negocios Puerta de Banús, N-340, Km 175, 29660 Nueva Andlucia

# IDILIQ

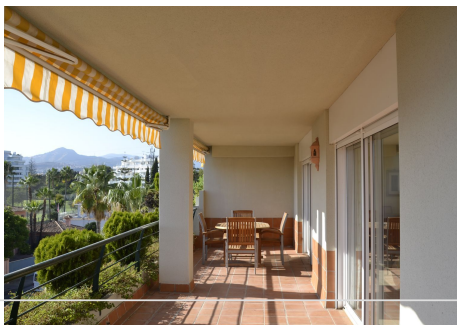
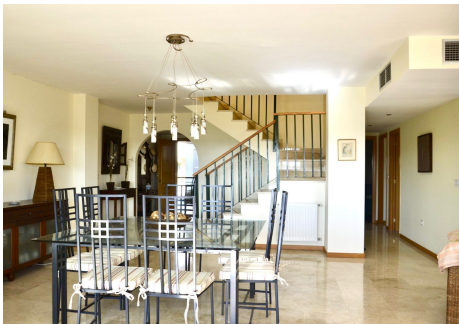
ESTATES

The interior of the home stands out for its high-quality finishes, such as marble floors, built-in wardrobes, wooden doors, double glazed windows and blinds.

Common areas and services:

? 7 community pools | Gardens and playground | 24-hour concierge and security | Elevator

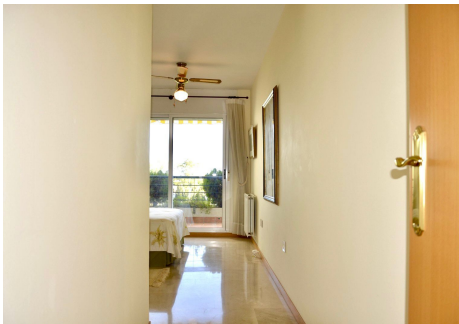
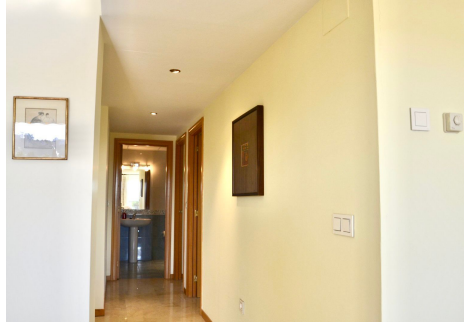
Don't miss this opportunity to live in an exclusive environment. Contact us for more information and visits without obligation.



+34 951 123 083 | +44 (0)330 179 8687 | [info@idiliqestates.com](mailto:info@idiliqestates.com) Local 28, Edificio D, Centro de Negocios Puerta de Banús, N-340, Km 175, 29660 Nueva Andlucia

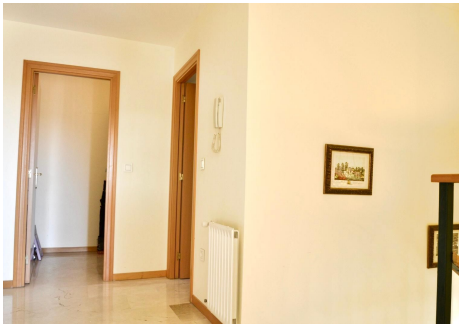
# IDILIQ

ESTATES



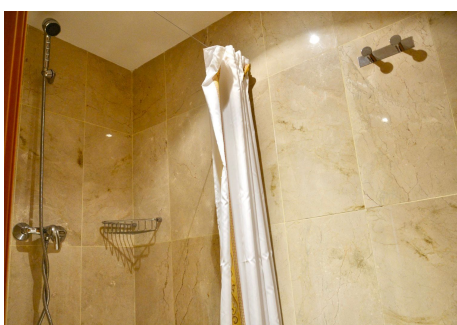
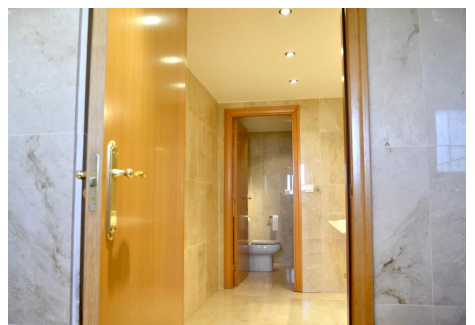
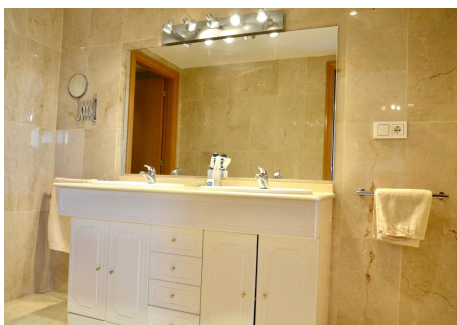
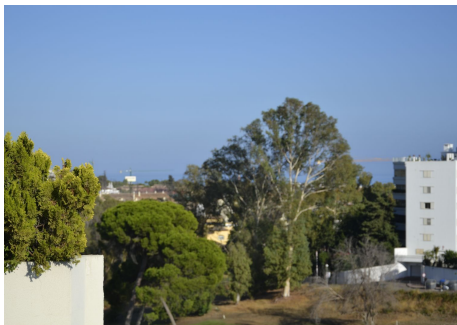
# IDILIQ

ESTATES



# IDILIQ

ESTATES



# IDILIQ

ESTATES

