

# IDILIQ

ESTATES



R5342743

 Ronda

REF# R5342743 690.000 €

BEDS

3

BATHS

2

BUILT

162 m<sup>2</sup>

PLOT

200 m<sup>2</sup>

Wouldn't you love to call home, one of the most iconic buildings overlooking the world-famous **El Tajo Bridge** in historic **Ronda, Andalucía**—a place cherished by **Hemingway**, **Orson Welles**, and legendary bullfighter **Antonio Ordóñez**, to name but a few.

Set within one of the most spectacular locations in the old town, this distinguished building was transformed into an **exclusive private residence**. Offering only **six luxury apartments** for a privileged few. Opportunities to purchase here are exceptionally rare.

Perfectly positioned on the enchanting **Plaza de María Auxiliadora**, at the corner of **Calle Tenorio**, the area exudes charm and a romantic ambience reminiscent of a bygone era—wander through cobble streets, breathe in the cooling breezes from the gorge, and listen to the distant notes of Spanish guitar drifting beneath shady trees.

**An Elegant Entrance**

Entering the apartment, you are welcomed by a **generous reception hall** featuring elegant parquet flooring. A convenient **courtesy toilet** for guests is thoughtfully positioned

+34 951 123 083 | +44 (0)330 179 8687 | [info@idiliqestates.com](mailto:info@idiliqestates.com) Local 28, Edificio D, Centro de Negocios Puerta de Banús, N-340, Km 175, 29660 Nueva Andalusia

# IDILIQ

## ESTATES

just off the entrance, adding comfort and practicality to the space.

A beautifully crafted arched doorway, fashioned from the dark cork-toned wood salvaged from an ancient mill, leads you gracefully into the heart of the home—an architectural feature that immediately sets the tone for the rest of the property.

**Spacious Living & Dining with Timeless Style**

The archway opens into a luminous, expansive living and dining room. Large surrounding windows flood the space with natural light and frame mesmerizing views of Ronda's dramatic landscape.

This exceptional room is designed for both relaxation and refined entertaining, enriched by rich parquet floors and the timeless elegance that permeates the entire residence. A modern, fully fitted kitchen extends conveniently from the living area. Featuring double sinks, a dishwasher, and a glass door opening directly onto the private patio, it seamlessly blends contemporary convenience with classic style.

**Two Serene Bedroom Suites**

The apartment offers two generous double bedrooms, each with adjoining marble-clad bathrooms finished in exquisite floor-to-ceiling Marfil marble.

One bathroom features a large walk-in shower; the other offers a refined ¾-length bath—both equipped with double sinks and elegant fittings.

Each bedroom includes large fitted wardrobes and direct access through windows and glass doors onto a 50m<sup>2</sup> garden patio. The wrought iron railings and panoramic views create an unforgettable connection to the natural beauty beyond.

Parquet flooring continues throughout, adding warmth, quality, and continuity.

**Private Garden & Extraordinary Views**

Stepping outside onto the expansive private patio and garden, you are immediately met with one of the most privileged views in all of Ronda: the majestic El Tajo Bridge, soaring above the gorge, and the sweeping valley beyond.

To wake up each day to this vista is to awaken inside a living painting—a window into Ronda's historic soul.

There is simply no better location in the city.

**Additional Features & Comforts**

<ul>

<li>Central heating throughout</li>

<li>Large private trastero ( Storeroom ) opposite the apartment, with carved oak door—ideal for storage, used as a laundry room and housing the large water heater</li>

<li>Lift (ascensor) in the building for upper floors</li>

<li>Beautiful handcrafted forged iron railings and traditional Moorish blue tiles in communal areas</li>

<li>Stone details on exterior walls preserving historic character</li>

<li>Access benefits: privilege to circulate more freely around Ronda's restricted historic centre, including crossing the bridge, plus free access to convenient parking at El Castillo in Plaza Duquesa de Parcent</li>

<li>Property owned by Spanish S.L. Company</li>

</ul>

**A Rare Offering**

# IDILIQ

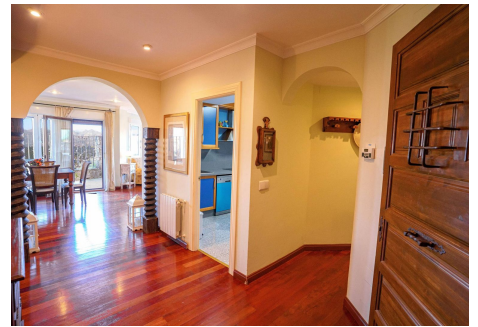
ESTATES

This ground-floor apartment is not simply a home—it's an opportunity to live in a place of exceptional heritage, beauty, and tranquility. Properties in this remarkable building seldom come to market, making this a unique chance to own one of Ronda's most coveted addresses.

**A timeless residence. A privileged location. A view like no other.**

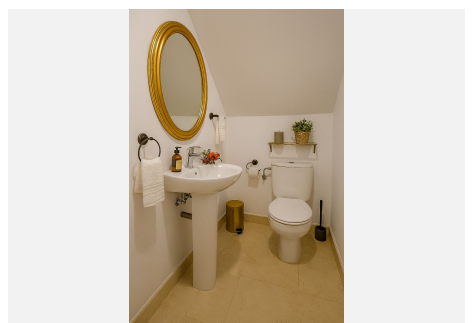
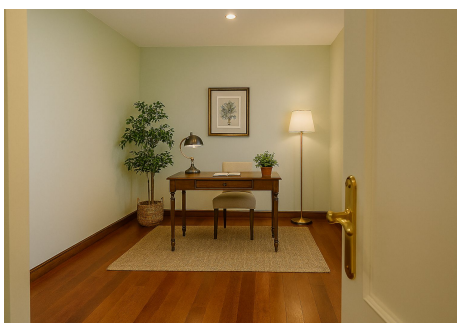
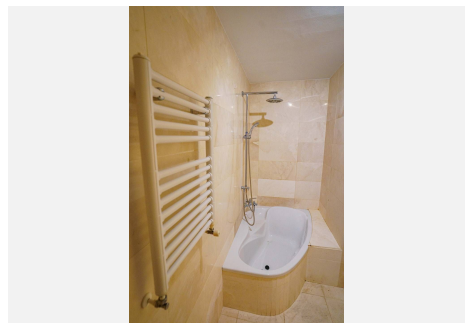
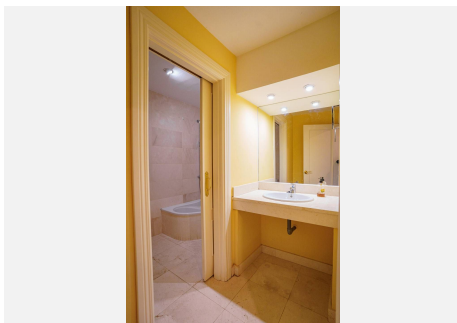
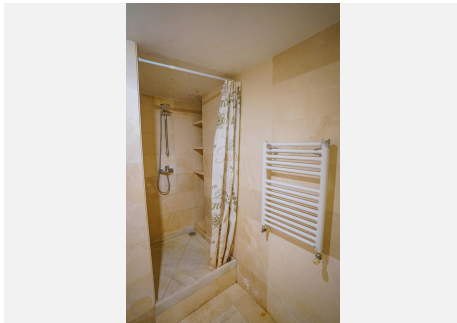
Welcome to a life of elegance above the gorge.

This apartment is being sold with only a small amount of furniture, therefore some of the photos have been home staged to give a potential buyer a truer perspective of how special this apartment is. translate to spanish



# IDILIQ

ESTATES



# IDILIQ

ESTATES

