



MIDDLE FLOOR APARTMENT 2 BEDROOMS 2.5 BATHROOMS IN CALAHONDA

 Calahonda

REF# R4780870 375.000 €

BEDS

2

BATHS

2.5

BUILT

138 m²

TERRACE

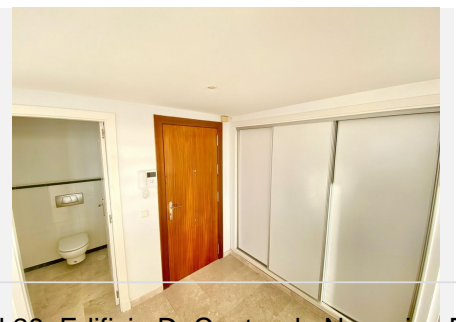
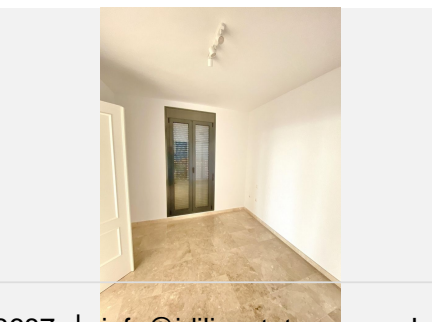
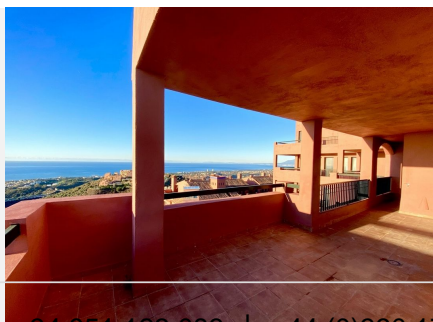
49 m²

THE PHOTOS ARE FROM ANOTHER UNIT BUT THE VIDEO IS FROM THIS UNIT This stunning apartment is located in a quiet and prestigious area, boasting beautiful views of the coast, countryside, garden, and sea. The apartment is built to high standards. It also features air conditioning hot/cold, a fireplace, and double glazing, providing maximum comfort and convenience. Two huge terraces. The property comes with a parking place and is situated in a gated complex with a video entry system and video cameras for added security. The communal garden is beautifully landscaped. The apartment also enjoys access to four community pools, and a community gym, making it ideal for families and those who enjoy an active lifestyle. The southwest-facing apartment features a private terrace, which provides ample space for outdoor dining and entertaining. The living room also features a fireplace, providing the perfect atmosphere for relaxing evenings at home. This investment property is in excellent condition and is ideal for those who appreciate modern conveniences and panoramic views. The apartment is conveniently situated near tennis courts, and the popular urbanization makes it easy to access all the amenities the area has to offer. The property is an excellent opportunity to own a quality residence in a sought-after area. Apartment, Urbanization, Parking: Underground, Communal Pool, Garden: Community, Facing: East, West and South. +34 951 123 083 | +44 (0)330 179 8687 | info@idiliqestates.com Local 28, Edificio D, Centro de Negocios Puerta de Banús, N-340, Km 175, 29660 Nueva Andlucia

IDILIQ

ESTATES

Views: Coastal, Countryside, Garden, Sea. Features 4 Community Pools, Air Conditioning Hot/Cold, Automatic Irrigation System, Barbecue, Built High Standards, Community Garden, Community gym, Community Pool, Conveniently Situated Tennis, Covered Terrace, Double Glazing, Electric Entry Phone, En suite bathroom, Excellent Condition, Fireplace, Fitted Wardrobes, Garage, Gated Complex, Hot water by electricity, Ideal Family Home, Ideal for Country Lovers, Investment Property, Landscaped Gardens, Laundry room, Lift, Living room with fireplace, Marble Floors, Pool, Popular Urbanisation, Prestigious Area, Private Terrace, Quality Residence, Sought After Area, Swimming Pool, Terrace, Video Cameras, Video entry system.



IDILIQ

ESTATES

