



MIDDLE FLOOR APARTMENT 2 BEDROOMS 2 BATHROOMS IN EL CHAPARRAL

 El Chaparral

REF# R4679284 357.000 €

BEDS

2

BATHS

2

BUILT

120 m²

TERRACE

30 m²

This quiet apartment boasts a south-facing orientation with stunning views of the countryside, garden, mountains, and sea. Featuring a fitted kitchen and ample parking in the garage, it offers convenient access to communal amenities including a pool and garden. Ideal for nature enthusiasts, it's situated within 5-10 minutes of a golf course and enjoys a tranquil atmosphere perfect for relaxation. The property is in good condition and exudes character with marble floors and a private terrace. Additional features include air conditioning, an en suite bathroom, a covered terrace, electric entry phone, laundry room, lift access, storage space, and access to communal facilities like tennis courts. Offering great rental potential, this apartment is an ideal choice for families or as an investment property for those seeking a peaceful yet convenient lifestyle.

Apartment, Quiet, Fitted Kitchen, Parking: Garage, Communal Pool, Garden: Community, Facing: South
Views: Countryside, Garden, Mountains, Sea

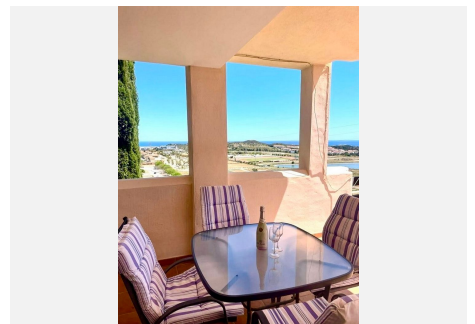
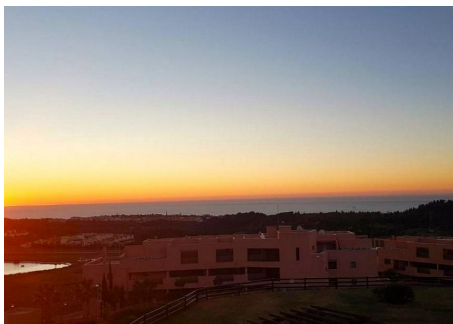
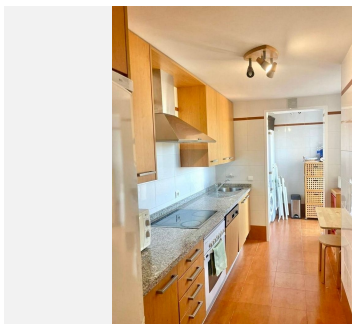
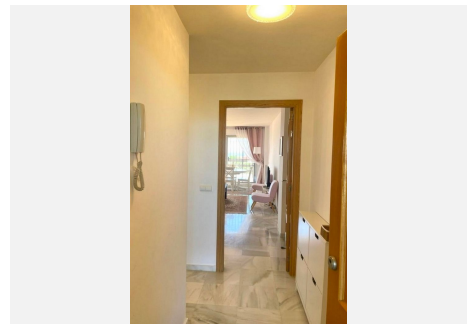
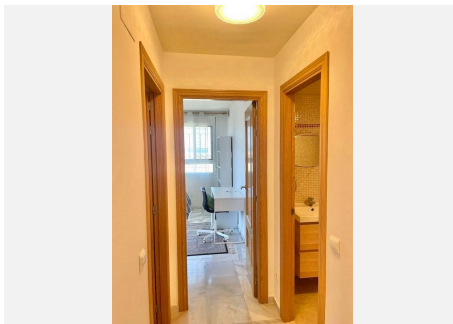
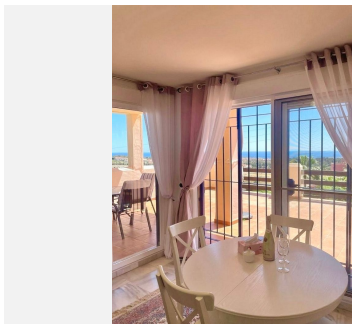
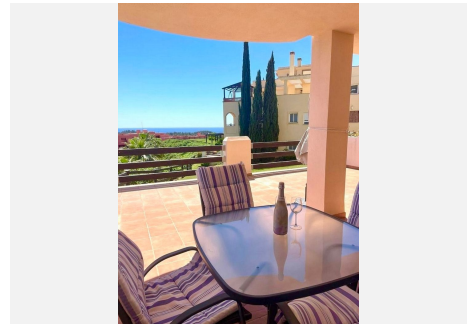
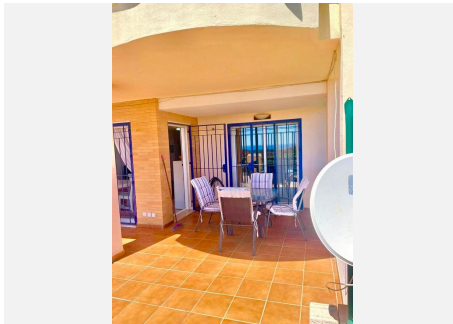
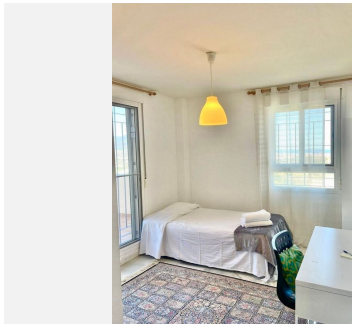
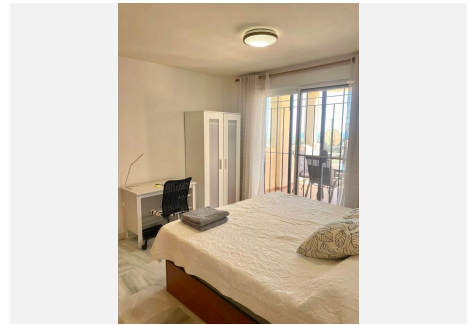
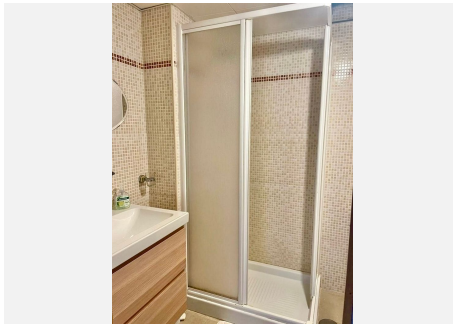
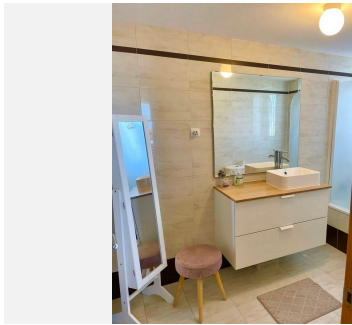
Features: 5-10 minutes to Golf Course, Air Conditioning, Air Conditioning Hot/Cold, Community Pool,

+34 951 123 083 | +44 (0)330 179 8687 | info@idiliqestates.com Local 28, Edificio D, Centro de Negocios Puerta de Banús, N-340, Km 175, 29660 Nueva Andlucia

IDILIQ

ESTATES

Condition – Good, Covered Terrace, Dining Area, Electric Entry Phone, En suite bathroom, Fitted Kitchen, Full of Character, Garage, Garden, Good Rental Potential, Ideal Family Home, Ideal for Country Lovers, Investment Property, Laundry room, Lift, Marble Floors, Parking, Pool, Private Terrace, Storage room, Swimming Pool, Tennis Court, Terrace



IDILIQ

ESTATES

