



R4753348

📍 The Golden Mile

REF# R4753348 750.000 €

BEDS

4

BATHS

2.5

BUILT

177 m²

TERRACE

38 m²

Introducing you this excellent duplex penthouse for sale in an ideal location, next to Manolo Santana Raquets club and a short drive from both the beach, Puerto Banus and Puente Romano. This is a beautifully renovated unit that is perfect for a family looking for their permanent residence in the sun or for a holiday home. Bright, spacious and stylish, if this sounds like what you are looking for you do not want to miss out on this unit. Seamlessly combining modern interiors with the lovely Andalusian exterior, giving residents the best of both worlds.

The duplex penthouse has 4 bedrooms. On the entrance level you have one double bedroom on the right-hand side, a guest bathroom, open plan renovated kitchen and bright living area, direct access to terrace with dining, and lounge area.

Moving up to the 1st floor you will find 3 spacious bedrooms. 2 of the bedrooms share one bathroom and the master has its own en-suite.

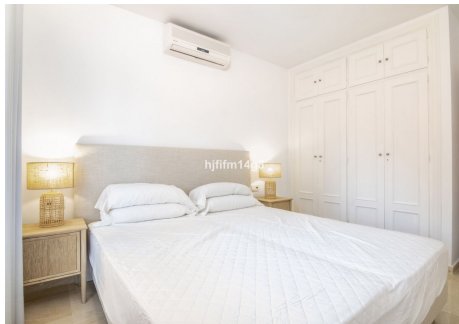
This level also has access to the fantastic roof top which offers sun all day!

+34 951 123 083 | +44 (0)330 179 8687 | info@idiliqestates.com Local 28, Edificio D, Centro de Negocios Puerta de Banús, N-340, Km 175, 29660 Nueva Andlucia

Carport parking.

The residential development of Club Sierra has some excellent facilities. It has a huge swimming pool, a children's pool, beautiful gardens and sun beds. What is really fantastic, is that it has its own club house/restaurant where you can enjoy a nice lunch close to the pool. Here there are often events and entertainment! A great community where you have all in one; a fantastic pool area for the children and a lovely place to eat.

The location is ideal as within a couple of minutes by car you arrive in Puerto Banus or Marbella. Right next door you have Manolo Santana tennis/country club so it is a perfect location for a sports lover. All amenities are near such as golf courses, bars and cafes, restaurants, international schools etc. You are also very near to a popular supermarket and some cafes. Therefore, everything you need to enjoy your life to the fullest is close by.



IDILIQ

ESTATES

