



R5203108

📍 La Mairena

REF# R5203108 1.599.000 €

BEDS

4

BATHS

4.5

BUILT

297 m²

PLOT

2456 m²

TERRACE

120 m²

Brand-New Contemporary Villa with Stunning Panoramic Views in La Mairena, Marbella East

Discover this brand-new villa (recently completed), where sleek modern design meets unparalleled privacy and awe-inspiring views stretching across the rolling hills and countryside all the way to the sea. Nestled in the exclusive La Mairena area on the Elviria's hill side in an area of outstanding natural beauty protected by UNESCO, this home offers an exclusive retreat for those seeking serenity without compromising on style.

Built on a generous 2,389 m² plot with 297 m² of living space, the villa has been designed to flood interiors with natural light while seamlessly connecting indoor and outdoor living. The residence features four bedrooms, including two en-suite bathrooms, plus a family bathroom and guest toilet. The master suite boasts an impressive dressing room with fitted wardrobes, a designer bathroom, and direct access to the main terrace.

At the heart of the home stands an impressive double-height open-plan living area with floor-to-ceiling windows, flooding the space with natural light and framing the spectacular views. This area flows effortlessly into the fully equipped modern kitchen, complete with a separate laundry room, a dual-sided fireplace, and a dedicated dining space—creating a perfect setting for both relaxation and entertaining.

+34 951 123 083 | +44 (0)330 179 8687 | info@idiliqestates.com Local 28, Edificio D, Centro de Negocios Puerta de Banús, N-340, Km 175, 29660 Nueva Andlucia

IDILIQ

ESTATES

Outdoor living is equally spectacular: expansive terraces, covered porches, and an infinity pool invite you to relax and soak in the panoramic scenery.

The villa is equipped with underfloor heating and air conditioning throughout via an efficient aerotherm system, ensuring comfort in every season and offers a large parking area for multiple vehicles.

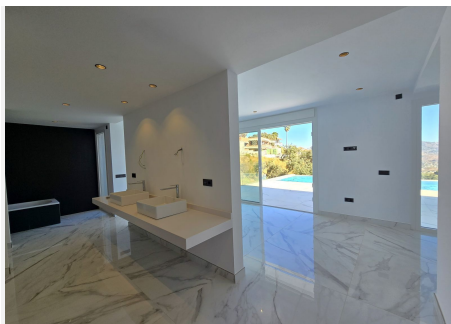
A ready-to-move-in contemporary sanctuary that perfectly blends sophistication, nature, and tranquillity—available now at a very competitive price. Don't miss out!

Beds: 4 | Baths: 4+1wc | Living area:297m2 | Terraces: 120m2 | Facing: S&E | Private swimming pool: 39m2 | Parking spaces | Construction year: 2025

Airport: 30 min drive – Marbella center: 15 min drive – Puerto Banús : 20 min drive – Golf course : 5 min drive – Beach: 8 min drive – Amenities, bars & restaurants: closest 3 min drive & 8 min drive – Public Transports : 8 min Drive

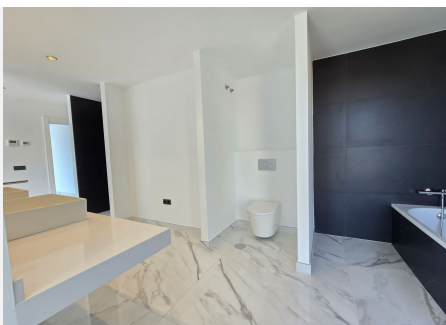
The property market on the Costa del Sol is red hot right now and good properties are being snapped up fast! We suggest that if you see something you like that fits your budget, contact us as soon as possible to avoid disappointment!

Our team works incessantly to make sure that the description and the sales prices for the properties offered on this website are correct and up to date. Notwithstanding, the information contained in this website is subject to errors and omissions, and the properties themselves subject to price changes, prior sale or withdrawal from market.



IDILIQ

ESTATES



IDILIQ

ESTATES

