



PENTHOUSE DUPLEX 3 BEDROOMS 3 BATHROOMS IN BENAHAVÍS

 Benahavís

REF# R5169055 925.000 €

BEDS

3

BATHS

3

BUILT

241 m²

TERRACE

89 m²

Discover a stunning apartment with the charm and feel of a townhouse in the exclusive Las Colinas de Marbella. This exceptional property, with a total of 241m² (152m² interior plus 89m² of terraces), combines space, natural light, and panoramic views, offering a lifestyle defined by elegance and comfort. From its terraces, you can enjoy sweeping vistas of the Mediterranean Sea, the famous La Concha mountain, and even the distant silhouette of Gibraltar.

The interior layout is designed for both style and functionality, featuring three generously sized bedrooms, each with its own en-suite bathroom. On the entrance level you will find two bedrooms, one of which opens directly onto a spacious terrace. The upper floor is dedicated to the luxurious master suite, complete with direct access to an expansive sun terrace. This outdoor haven is perfect for relaxation or entertaining, with ample space for dining, lounging, an outdoor kitchen, and even a refreshing shower.

Parking is conveniently located right outside the residence, adding to the overall ease of living.

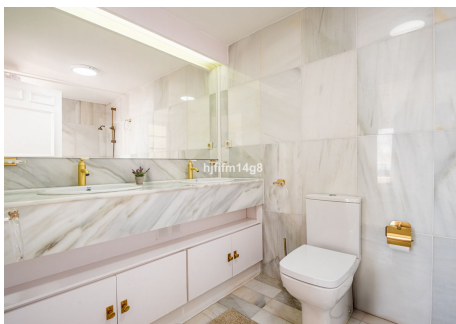
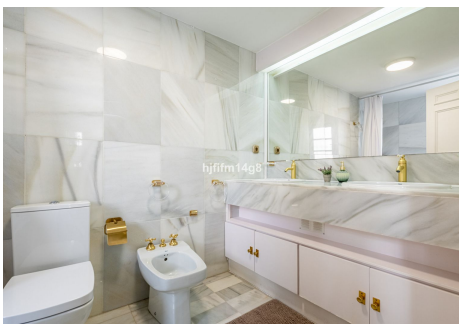
+34 951 123 083 | +44 (0)330 179 8687 | info@idiliqestates.com Local 28, Edificio D, Centro de Negocios Puerta de Banús, N-340, Km 175, 29660 Nueva Andlucia

IDILIQ

ESTATES

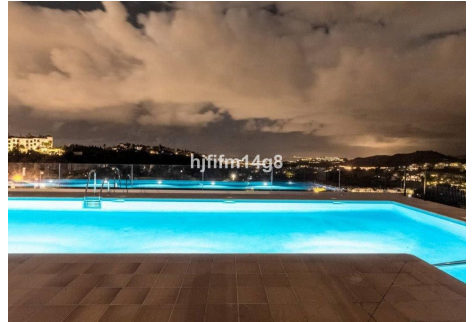
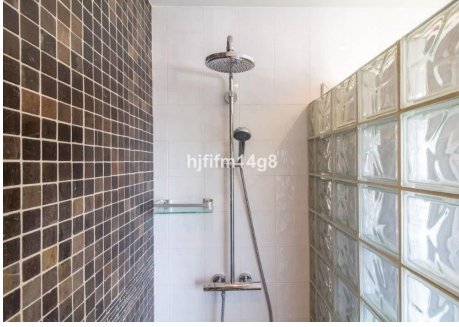
The property is part of a beautifully maintained community with a panoramic swimming pool and is secured within a gated complex, making it a safe and attractive choice. With proven rental potential, it also represents a strong investment opportunity.

Whether you are seeking a permanent residence, a holiday getaway, or a property with reliable rental income, this home offers it all. Its prime location places you within just a few minutes' drive of Marbella's sandy beaches, world-class golf courses, fine dining, shopping, and top international schools.



IDILIQ

ESTATES



IDILIQ

ESTATES

