



PENTHOUSE DUPLEX 3 BEDROOMS 3 BATHROOMS IN NUEVA ANDALUCÍA

📍 Nueva Andalucía

REF# R5158996 945.000 €

BEDS

3

BATHS

3

BUILT

249 m²

Welcome to what we believe is the best penthouse in Aloha Mirasierra, offering a rare combination of privacy, space, views, and unbeatable location. Nestled in a peaceful yet central setting, this home is within walking distance of everything you need – restaurants, bars, supermarkets, banks, golf courses, and nature trails are all just a short stroll away.

Property layout:

Step into a home that truly has it all. This bright and beautifully laid-out duplex penthouse welcomes you with a spacious entrance hall. To the right, a staircase leads to the top floor, while discreet and practical storage space is cleverly tucked beneath.

Main Floor:

– Modern kitchen (refurbished in 2013) with direct access to a north-facing terrace, offering open views towards the iconic La Concha Mountain, and across to the Las Brisas valley, mountains, and golf course.

+34 951 123 083 | +44 (0)330 179 8687 | info@idiliqestates.com Local 28, Edificio D, Centro de Negocios Puerta de Banús, N-340, Km 175, 29660 Nueva Andlaucia

- Additional storage space on the terrace – ideal for tools and garden supplies.
- Open-plan dining and living area, leading onto the main south-facing terrace – totally private, sun-drenched, and boasting stunning panoramic views of the valley, complex, and the sea.
- One double bedroom with direct access to the terrace.
- Guest bathroom with shower.

Top Floor:

- Two double bedrooms, both featuring charming high ceilings with exposed beams.
- Originally, there was only one bathroom upstairs; this was renovated in 2013, at which time an additional bathroom was added to the master bedroom.
- The guest bedroom is generous in size, with ample wardrobes and access to its own private south-facing terrace, as well as a full bathroom located in the hallway.
- The master suite includes an en-suite bathroom and access to a separate terrace – with a surprise bonus: a kitchenette on one side and a versatile extra room on the other, perfect for an office, kids' playroom, or hobby space.
- Both bathrooms on this level feature underfloor heating for added comfort.

Additional Features:

- Completed in 2003, the complex is immaculately maintained and includes lift access from the garage directly to the apartment entrance.
- All terraces and flowerbeds have been meticulously refurbished to ensure complete waterproofing and prevent any leaks.
- The property includes a large parking space suitable for two cars, plus a spacious storage room ideal for bikes, golf bags, or travel gear.

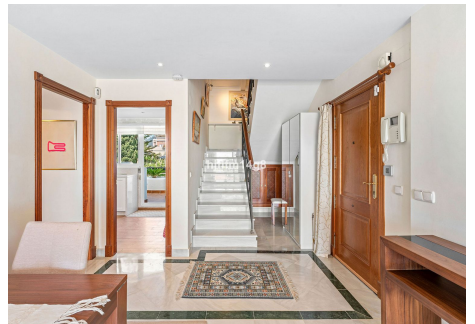
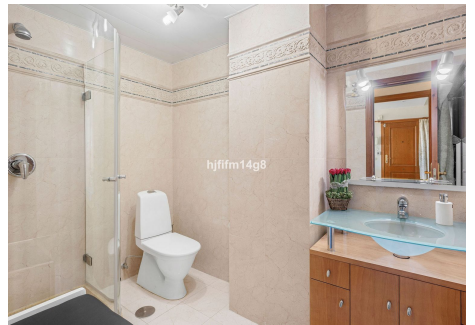
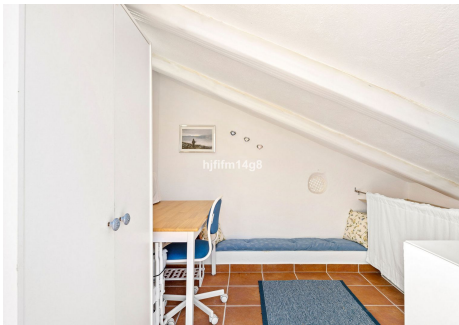
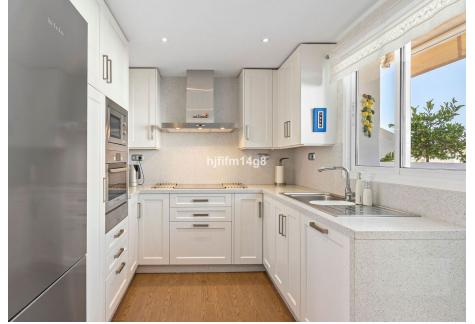
This is a rare opportunity to own a truly unique penthouse in one of the most desirable urbanisations in the area. With its blend of charm, practicality, and unbeatable views, this home is perfect for both full-time living and luxurious holidays.

SURFACES:

- Interior: 131sqm
- Terrace: 73sqm
- Garage: 34sqm
- Storage: 11sqm

IDILIQ

ESTATES



IDILIQ

ESTATES

