



R4788604

 Nueva Andalucía

REF# R4788604 2.250.000 €

BEDS

3

BATHS

2

BUILT

148 m²

TERRACE

148 m²

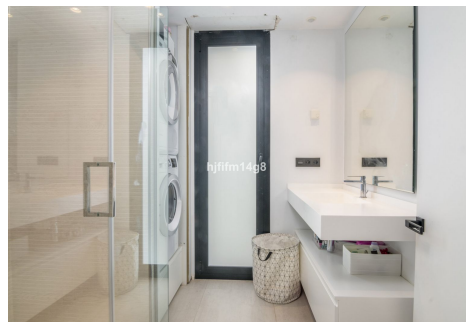
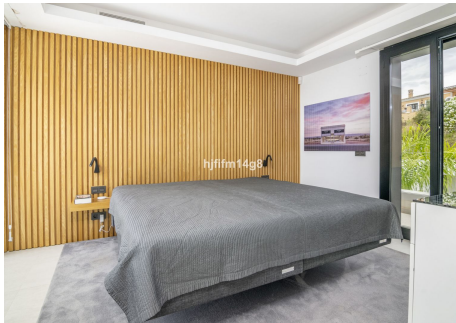
Luxurious penthouse for sale Built in 2018, this property is a contemporary and unique development, set in the hills of the sought after and exclusive Nueva Andalucía Golf Valley. This desirable penthouse is built to a very high standard and has all the top-quality finishes and modern home comforts you could wish for! Due to its elevated position, the property boasts beautiful views! The open-plan kitchen with convenient breakfast bar, opens onto the combined dining and living area. This area leads directly outside to a spacious corner terrace surrounded by glass balustrades which magnify and enhance the incredible views! Here you also find the private plunge pool where you can enjoy the panoramic views, but also the sunset while you have a little dip. Stepping back inside the property reveals three, generously sized double bedrooms. The master bedroom has an en-suite (shower and bath) and the two guest bedrooms share a bathroom. The apartment has stylish ceramic tiles throughout the apartment, the bedrooms have wooden floors. Extra features include an alarm, automatic (metal) blinds, automatic climate control in each room, energy saving air conditioning in every room with heating option and a home automation system. Furthermore, there is a stylish smart home system and underfloor heating (powered by warm water in the hall and electric underfloor heating in the bathrooms). In each room there are three to four lighting systems which help create a relaxing ambience. Residents have access to a range of on-site facilities, including an outdoor swimming pool, indoor spa with

+34 951 123 083 | +44 (0)330 179 8687 | info@idiliqestates.com Local 28, Edificio D, Centro de Negocios Puerta de Banús, N-340, Km 175, 29660 Nueva Andalucía

IDILIQ

ESTATES

sauna, Turkish bath, jacuzzi, gym and solarium. There are two underground parking spaces and two storage rooms included with this property. Azahar de marbella is ideally situated in a tranquil yet convenient location, close to a range of renowned golf courses, including Los Naranjos, Las Brisas and Aloha. This move-in-ready property is the perfect place for those looking for a modern penthouse with panoramic views. With an enviable location, easy access and breath-taking views of La Concha mountain and the stunning surrounding scenery, it's a property of unparalleled luxury and magnificence!



IDILIQ

ESTATES

