



R4432711

📍 La Mairena

REF# R4432711 392.000 €

BEDS

3

BATHS

2

BUILT

104 m²

PLOT

20 m²

TERRACE

21 m²

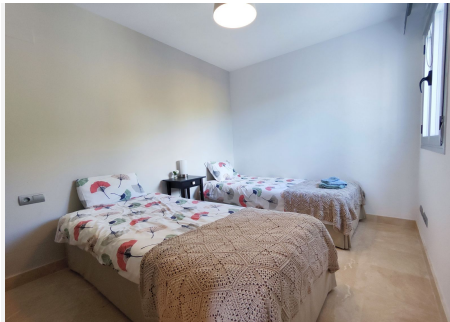
Excellent corner garden apartment located in the protected area of La Mairena (UNESCO Biosphere) on the heights of Elviria. The property enjoys fantastic privacy thanks to its corner position with good size terrace and large private use garden. Bright living room open onto the terrace equipped with glass curtains, fully fitted open style kitchen, very good quality specifications, including top quality Saloni flooring, double glazed window, with shutters in the bedrooms, Hot&Cold A/C, solar panel for hot water, private parking place, etc... The complex offers landscaped gardens, a lovely swimming-pool and free access to El Soto Golf club facilities which includes 9 holes Golf course, Tennis and Paddle Courts, Gymnasium, Sauna, Turkish Bath, Hydro-SPA, putting green, children play ground and a superb bar-restaurant with free wifi, beautiful terraces, BBQ area and evening entertainments. Bedroom: 3 | Bathroom: 2 | Interior size: 104m² | Terraces: 21m² | Swimming-pool: communal | Private parking | Facing: S-SE Airport: 30 min drive - Marbella Town: 13 min drive - Puerto Banus: 17 min drive - Golf course: On-site - Beach: 8 min drive - Amenities: 7 min drive - Public Transports: 8 min drive Our team works incessantly to make sure that the description and the sales prices for the properties offered on this website are correct and up to date. Notwithstanding, the information contained in this website is subject to errors and omissions, and the properties themselves subject to price changes, prior sale or withdrawal from market. The property market on the Costa del Sol has completely

+34 951 123 083 | +44 (0)330 179 8687 | info@idiliqestates.com Local 28, Edificio D, Centro de Negocios Puerta de Banús, N-340, Km 175, 29660 Nueva Andlucia

IDILIQ

ESTATES

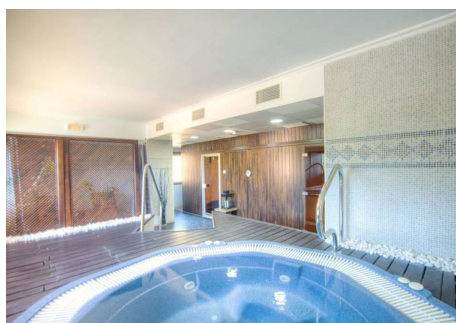
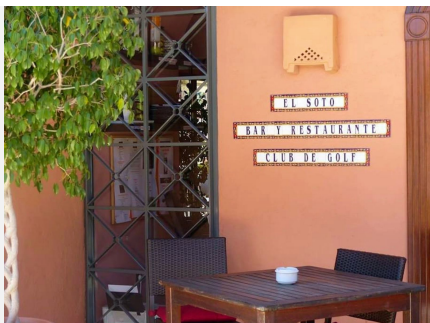
recovered and the good properties are being snapped up fast! We suggest that if you see something you like that fits your budget, contact us as soon as possible to avoid disappointment!



+34 951 123 083 | +44 (0)330 179 8687 | info@idiliqestates.com | Local 28, Edificio D, Centro de Negocios Puerta de Banús, N-340, Km 175, 29660 Nueva Andalucía

IDILIQ

ESTATES



IDILIQ

ESTATES

