



GROUND FLOOR APARTMENT 2 BEDROOMS 2 BATHROOMS IN LA MAIRENA

📍 La Mairena

REF# R5372845 328.000 €

BEDS

2

BATHS

2

BUILT

112 m²

TERRACE

40 m²

Exclusive listing!

Incredible opportunity!! Beautiful elevated ground floor apartment in La Mairena, with panoramic views to the mountains and the valley and facing the sea.

This 2 bed, 2 bath apartment gives you the opportunity to live amidst nature and still be close to Elviria and Marbella.

It has an East facing terrace, with morning sun and also has another large South-West facing terrace for afternoon sun. (16m² + 25m²)

The kitchen and both bathrooms have been renovated a few years ago. New airconditioning units have also been installed.

Open plan kitchen with stunning views! A very private location for those seeking peace and quiet.

The gated community has a communal pool and beautiful mature gardens with palm trees and cork trees

+34 951 123 083 | +44 (0)330 179 8687 | info@idiliqestates.com Local 28, Edificio D, Centro de Negocios Puerta de Banús, N-340, Km 175, 29660 Nueva Andlucia

IDILIQ

ESTATES

where you can enjoy the warm mediterranean climate!

La Mairena is well known for its Natural Reserve that surrounds the area.

It is just walking distance to the German School (Colegio Aleman) and there is also a restaurant and a little supermarket up in La Mairena and comercial centers with lots of bars and restaurants and the fresh-market on Friday in Elviria. From la Mairena you reach La Cala Golf Resort in only 3 minutes.

The sandy beach is only a 10min drive down, and there you will be able to enjoy one the best beaches of Marbella. Beach restaurants and Beach clubs as Nikki Beach and Pearl Beach will surely be appreciated!

This apartment comes with a parking space in the gated community and is fully furnished, except from some personal belongings.

Don't wait to make your appointment! We have the keys.

Ground Floor Apartment, La Mairena, Costa del Sol.

2 Bedrooms, 2 Bathrooms, Built 112 m², Terrace 40 m².

Setting : Country, Close To Golf, Close To Shops, Close To Town, Close To Schools.

Orientation : East, West.

Condition : Good.

Pool : Communal.

Climate Control : Air Conditioning, Hot A/C, Cold A/C.

Views : Sea, Mountain, Country, Panoramic, Garden, Forest.

Features : Covered Terrace, Fitted Wardrobes, Private Terrace, Ensuite Bathroom, Marble Flooring, Double Glazing, Fiber Optic.

Furniture : Part Furnished.

Kitchen : Fully Fitted.

Garden : Communal.

Security : Gated Complex, Electric Blinds.

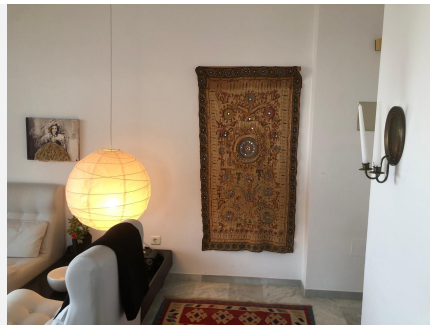
Parking : Private.

Utilities : Electricity, Drinkable Water.

Category : Golf, Holiday Homes, Investment, Resale.

IDILIQ

ESTATES



IDILIQ

ESTATES



IDILIQ

ESTATES

