



R5307103

📍 Nueva Andalucía

REF# R5307103    420.000 €

BEDS

2

BATHS

2

BUILT

120 m²

This charming 2 bedroom apartment for sale in Le Village, Nueva Andalucía offers a comfortable lifestyle in one of Marbella's most sought-after residential areas. The property is located within a well-established and well-maintained urbanization, surrounded by manicured communal gardens, a swimming pool, and open views over the golf course. Le Village is known for its peaceful atmosphere, quality construction, and proximity to top golf courses, restaurants, international schools, and Puerto Banús, making it an ideal choice for both permanent living and investment.

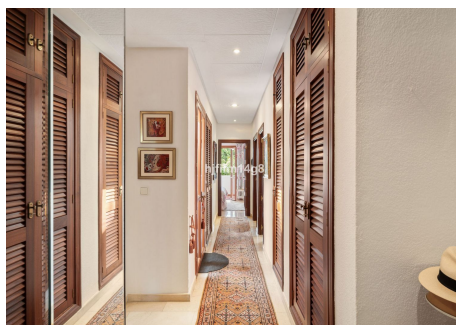
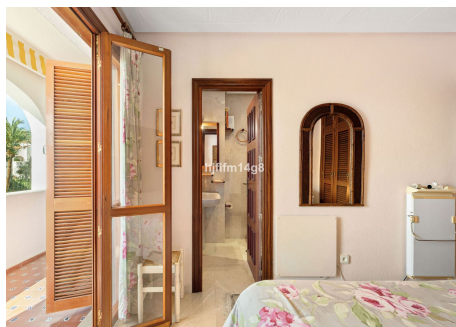
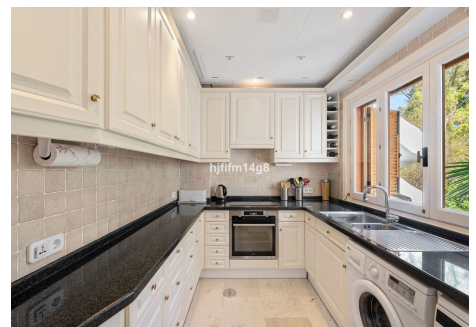
The apartment features a bright combined dining and living area with a cosy fireplace and direct access to the main south-west facing terrace, which enjoys beautiful views over the communal gardens and the golf course, perfect for enjoying afternoon sun and sunsets. The separate fully fitted kitchen was refurbished a few years ago and offers pleasant views towards the garden and pool area. There is also a second extra terrace or patio overlooking the communal gardens, adding valuable outdoor space. The master bedroom includes an en-suite bathroom and direct access to the main terrace, while the guest bedroom also benefits from its own en-suite bathroom. Throughout the apartment and hallways there are numerous built-in



wardrobes, providing excellent storage space.

The price includes one carport parking space within the gated community, completing this well-rounded property in the heart of Nueva Andalucía.

Le Village is known for its welcoming atmosphere, charming Andalusian-style architecture and excellent on-site amenities such as swimming pool, tennis court, a gym, clubhouse, and SPA area with indoor heated pool and jacuzzi. Located in the heart of the Golf Valley, the area provides easy access to several top golf courses, international schools, shopping, dining and Puerto Banús, making it a privileged setting that combines lifestyle and location.



# IDILIQ

ESTATES

