



## PENTHOUSE DUPLEX 2 BEDROOMS 2.5 BATHROOMS IN NUEVA ANDALUCÍA

 Nueva Andalucía

REF# R5107045    975.000 €

BEDS

2

BATHS

2.5

BUILT

238 m<sup>2</sup>

Welcome to this bright and spacious 2-bedroom penthouse in the sought-after Lorcrigolf community, perfectly positioned next to the golf course and offering spectacular views of La Concha Mountain.

As you enter the property, you're greeted by a generous hallway leading to a modern, sunlit kitchen with direct access to the main terrace – ideal for al fresco dining or morning coffee surrounded by lush greenery.

The living room is the heart of the home, boasting floor-to-ceiling windows that flood the space with natural light and offer breathtaking panoramic views. Enjoy seamless indoor-outdoor living with access to two terraces – a cozy south-facing terrace and a spacious northeast-facing terrace overlooking the golf course and the iconic mountain backdrop.

Also on the entrance level, you'll find a guest toilet and stairs leading up to the first floor, where you'll find two generously sized double bedrooms, each with its own private bathroom and private terrace – perfect for

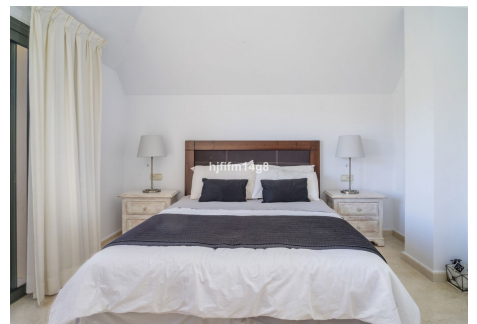
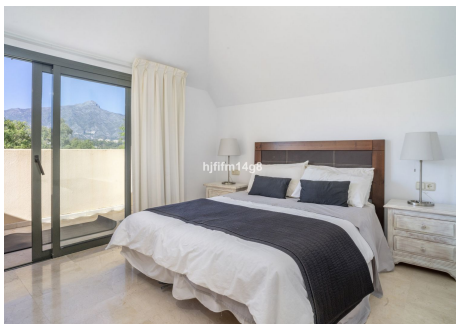
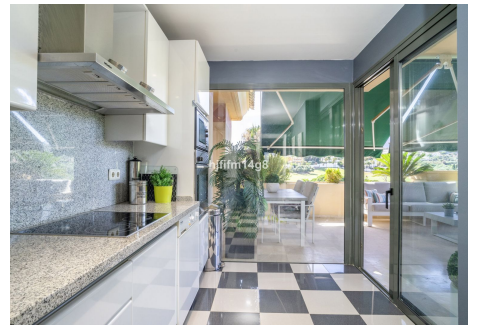
enjoying peaceful mornings or evening sunsets.

Additional features include:

- Underfloor garage parking space
- Separate storage room in the garage
- Access to a gated community with a beautiful pool area and sauna
- Surrounded by manicured gardens and peaceful surroundings

Whether you're looking for a permanent residence, a holiday retreat, or an investment property, this golf-front penthouse in Lorcrigolf offers a unique combination of location, views, and comfort.

Contact to arrange a viewing and experience this exceptional property for yourself!





# IDILIQ

ESTATES

