

IDILIQ

ESTATES



R4794139

📍 Nueva Andalucía

REF# R4794139 995.000 €

BEDS

2

BATHS

2

BUILT

238 m²

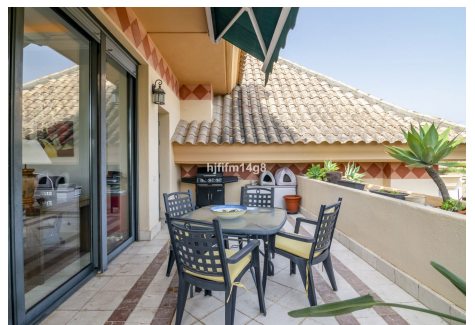
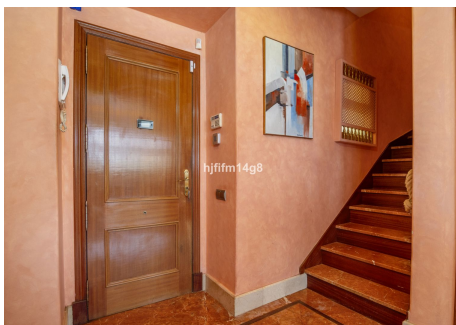
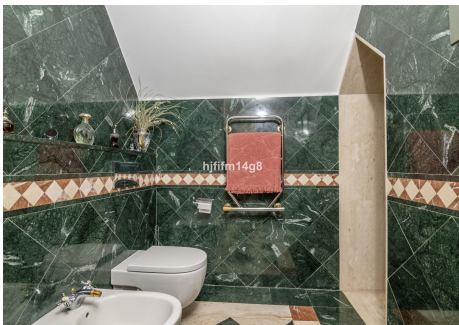
Are you looking for a property for sale located in the heart of Nueva Andalucía, Marbella? Are you a golf lover? Then, you will love this listing! Introducing you to this bright and spacious duplex penthouse unit situated next door to Los Naranjos Golf Club in a small residential development called Lorcrigolf. Lorcrigolf consists of only 22 units set over two blocks. Therefore, it offers a very cosy, family friendly and comfortable place to live in Nueva Andalucía, Marbella. The picturesque views of the golf course and the La Concha Mountain offer a tranquil environment for families and couples. This unit comprises, on the main level, spacious combined living-dining area with cosy fireplace and access to two wide terraces. Fully fitted kitchen with access to one of the terraces. Guest toilet. Upstairs you have 2 good sized bedrooms with private balconies and 2 bathrooms. One parking space and one storage room are included in the price. Property surface: 237,6sqm Garage-Storage surface: 35,41sqm The complex also has manicured gardens and a great pool area to enjoy during the summer months in Marbella. The development is just 100m from Los Naranjos Golf Club, which is renowned for its fairways and a great restaurant. In addition, other golf courses of Nueva Andalucía's Golf Valley are also nearby. A golfer's dream come true! Puerto Banus and the surrounding beaches can also be reached within 5 minutes, so everything you could ever need is very easily reached. A great unit if you are looking for a property with ideal location and beautiful views. This

+34 951 123 083 | +44 (0)330 179 8687 | info@idiliqestates.com Local 28, Edificio D, Centro de Negocios Puerta de Banús, N-340, Km 175, 29660 Nueva Andalucía

IDILIQ

ESTATES

wonderful property has excellent potential for both long and short term rentals.



+34 951 123 085 | +44 (0)330 179 8687 | info@idiliqestates.com Local 28, Edificio D, Centro de Negocios Puerta de Banús, N-340, Km 175, 29660 Nueva Andalucía