



R4936648

 Benahavís

REF# R4936648 378.210 €

BEDS

3

BATHS

3

BUILT

287 m²

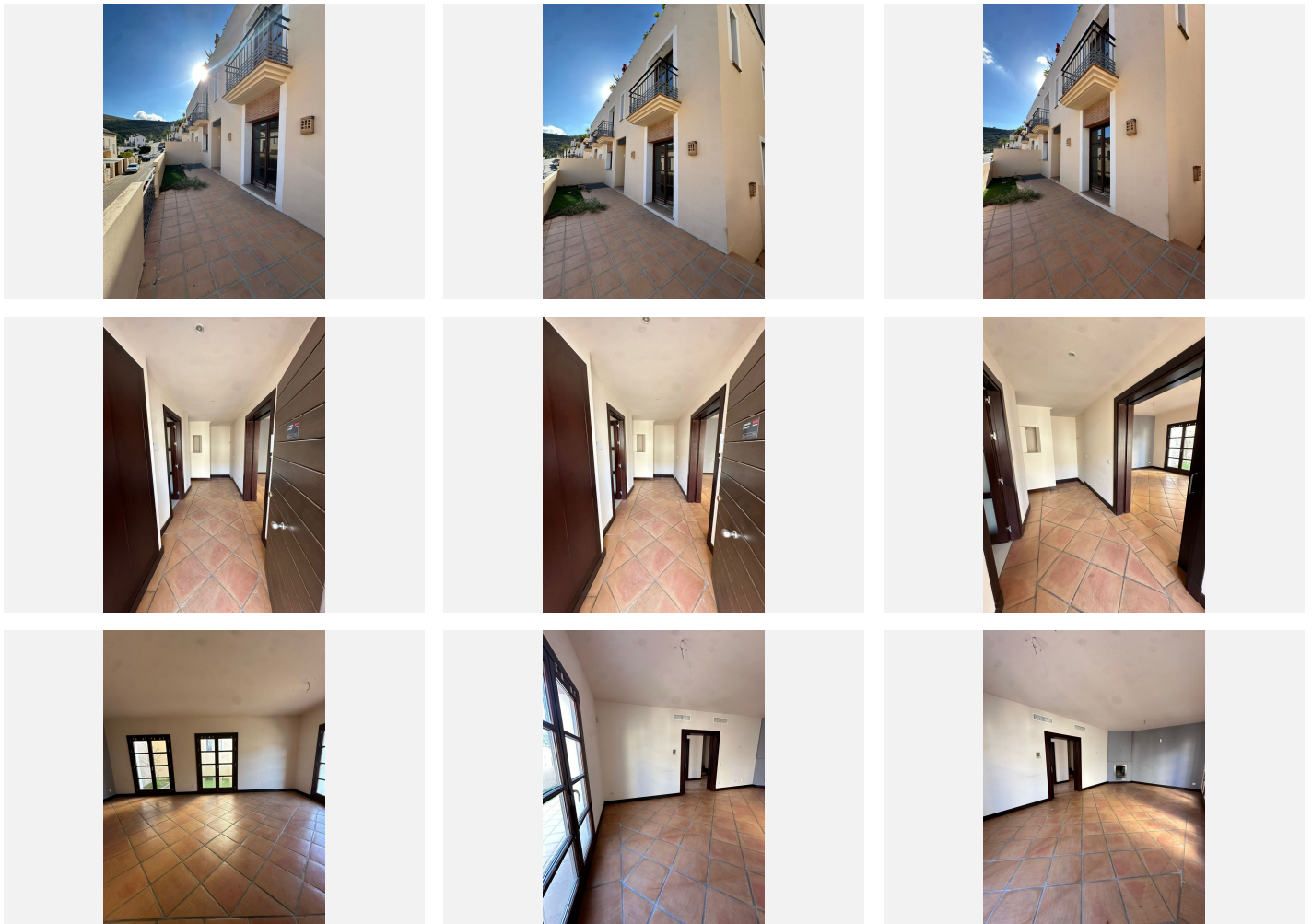
We offer you a great opportunity to acquire a home in one of the most beautiful and sought-after private complexes for its great location, in the town of Benahavís (Málaga), 5km from the centre and very close to Puerto Banús, which, being situated on the top of a hill, has impressive panoramic views of the sea and the tranquillity that your rest requires. This semi-detached house with several floors for sale, has a built area of 287m², distributed in: Basement floor: it has a space for a garage with a storage room and a staircase that connects to the middle floor. Middle floor: it consists of a bedroom with access to a small interior patio, 1 full bathroom with a bathtub and a large laundry room. Main floor: entrance through a distribution corridor, independent and modern kitchen, spacious with natural ventilation, furnished and equipped with the highest quality, large living-dining room with fireplace with access to a private garden. Upper floor: it has 2 en-suite bedrooms (one of the bathrooms with a hydromassage bathtub), with built-in wardrobes and exterior balconies. It has good construction qualities and good finishes such as: wooden doors, ducted air conditioning and tiled bathrooms from ceiling to floor. The development has private access, security, communal swimming pools and large, well-kept subtropical garden areas. Its interior streets are paved and landscaped. This urbanisation is located to the south of the town, with two nearby communication routes, the AP-7 Costa del Sol motorway and the A-7 motorway, which connect it to Málaga, which is about 80 km

+34 951 123 083 | +44 (0)330 179 8687 | info@idiliqestates.com Local 28, Edificio D, Centro de Negocios Puerta de Banús, N-340, Km 175, 29660 Nueva Andalucía

IDILIQ

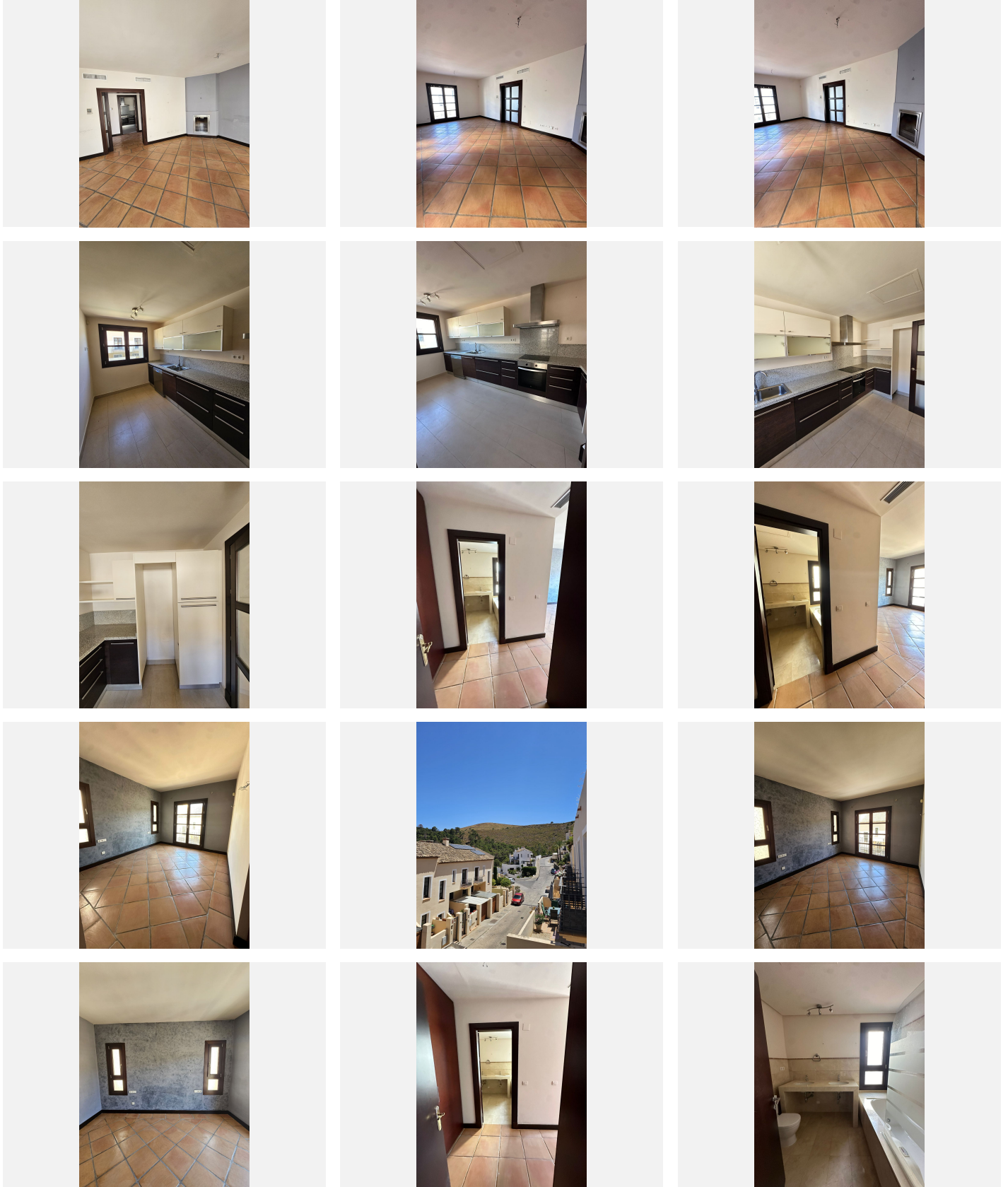
ESTATES

away, very close to the A-7175 road, the access road to the town, being a natural area with many paths, which allows for easy walking and outdoor sports, having several golf courses in its vicinity and internally, that is, belonging to the urbanisation, facilities for leisure: extensive gardens, clubhouse, gym and several swimming pools, one of them covered. Benahavís is a mountain village located 7 km from the coast. It is located between Marbella, Estepona and Ronda, on the Costa del Sol. It is popular for its restaurant offering and for being a white village with a typical Arabic layout. Ideal home for those looking for tranquility and proximity to a vibrant town, with beautiful surroundings and a wonderful climate all year round, and of course they can benefit from a good price since it comes from a bank. **IT IS A UNIQUE OPPORTUNITY TO GET YOUR DESIRABLE HOME AT THE BEST PRICE!** Are you going to let it get away? **NOTICE:** the information contained in this advertisement may be subject to errors or omissions. The properties may be subject to price change, sale or withdrawal from the market. For more information do not hesitate to contact us. **CONTACT US, WE WILL BE HAPPY TO HELP YOU.** Our agency fees are already included in the sale price so you will not have to pay any type of management or real estate advice fees and in compliance with the Decree of the Junta de Andalucía 218/2005 of October 11, it is reported that the notary, registry, ITP and other expenses inherent to the sale are not included in the price.



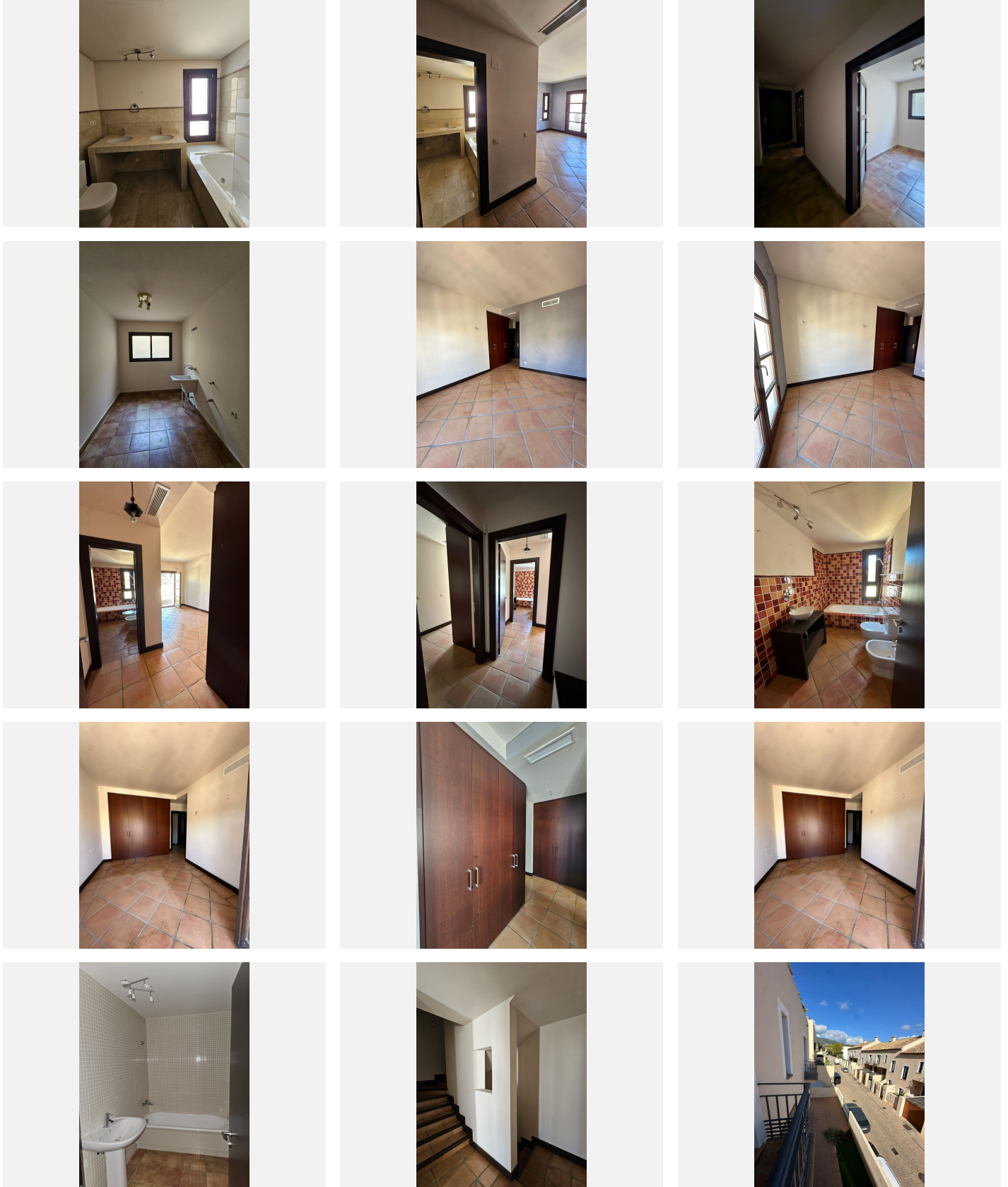
IDILIQ

ESTATES



IDILIQ

ESTATES



IDILIQ

ESTATES

