



R5424481

📍 San Pedro de Alcántara

REF# R5424481 675.000 €

BEDS

3

BATHS

2

BUILT

230 m²

TERRACE

100 m²

Dream Penthouse in the Heart of San Pedro de Alcántara

Discover one of the most coveted properties on the market today: an exclusive corner penthouse, all on one level and designed for comfortable, elegant living without the need for a car.

Located in the very center of San Pedro de Alcántara, this magnificent home perfectly combines the cosmopolitan atmosphere of Marbella with the authentic charm of an Andalusian village. Everything you need is just steps away: restaurants, cafes, supermarkets, pharmacies, schools, and leisure areas.

Just 700 meters from the beach and the promenade, it offers the privilege of enjoying the Mediterranean lifestyle year-round.

Spacious and Light-Filled Homes

This 130 m² (1,300 sq ft) home is all on one level, with an excellent layout that includes:

+34 951 123 083 | +44 (0)330 179 8687 | info@idiliqestates.com Local 28, Edificio D, Centro de Negocios Puerta de Banús, N-340, Km 175, 29660 Nueva Andlucia

3 spacious bedrooms
2 full bathrooms
A bright, open-plan living and dining room
A modern, integrated kitchen
Large windows that flood every room with natural light
A Terrace That Makes All the Difference

The true highlight of this property is its spectacular wraparound terrace of over 100 m² (1,200 sq ft). Thanks to its prime corner location, it enjoys sunshine all day long and offers a variety of spaces for relaxing, al fresco dining, or entertaining.

Unparalleled Views

From the terrace, you can enjoy breathtaking panoramic views stretching from the mountains of Marbella to the Rock of Gibraltar and the African coast, creating a unique setting both during the day and at sunset.

The Best of a Villa, with the Advantages of a Penthouse

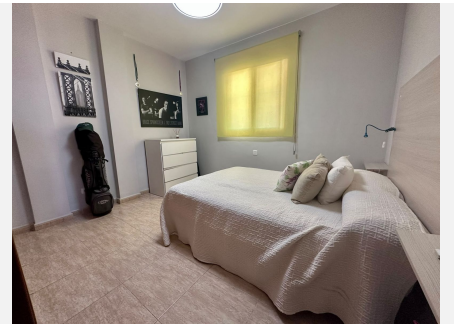
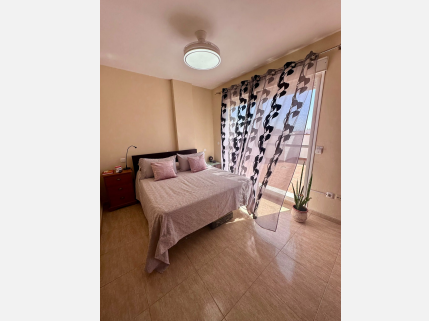
This exceptional property offers the privacy, spaciousness, and sense of independence of a villa, combined with the comfort and security of a high-rise apartment.

Key Features

Corner penthouse on a single level
130 m² built area
Over 100 m² terrace
3 bedrooms and 2 bathrooms
South-facing
Air conditioning (heating and cooling)
Fireplace
Walking distance to all amenities
700 meters from the beach
Panoramic views of the sea, Gibraltar, and the African coast
A unique opportunity to enjoy a prime location, ample outdoor space, and some of the best views in San Pedro de Alcántara.

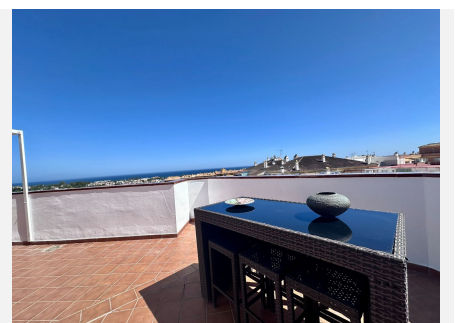
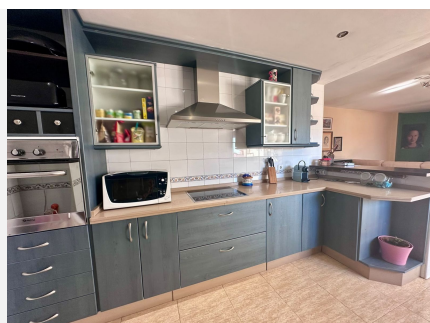
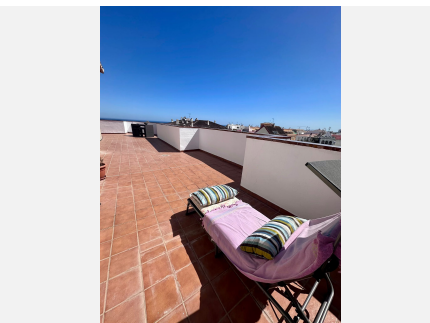
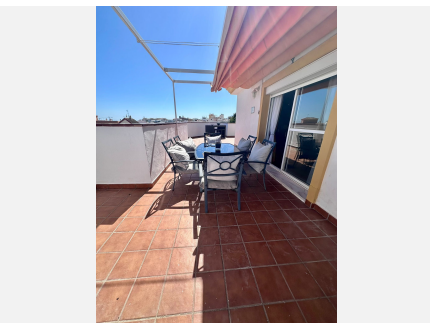
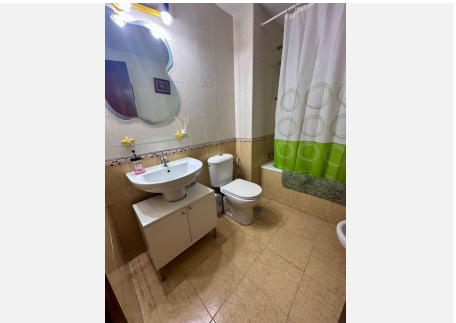
IDILIQ

ESTATES



IDILIQ

ESTATES



IDILIQ

ESTATES

