



PENTHOUSE 1 BEDROOM 1 BATHROOM IN BENALMADENA COSTA

 Benalmadena Costa

REF# R5363119 329.000 €

BEDS

1

BATHS

1

BUILT

87 m²

TERRACE

32 m²

Building located just 100 meters from the beach and the promenade. Frontline location in one of the most sought-after areas of Benalmádena Costa.

The Property:

Stunning 5th-floor Penthouse featuring a private rooftop solarium.

Main Living Area (Lower Level – 50 m²):

Layout: 1 bedroom with double bed, an integrated living room and kitchen, and 1 bathroom.

Outdoor Space: 6 m² terrace with sea views and southern orientation.

Finishes & Features:

High-security entrance door and white interior doors.

+34 951 123 083 | +44 (0)330 179 8687 | info@idiliqestates.com Local 28, Edificio D, Centro de Negocios Puerta de Banús, N-340, Km 175, 29660 Nueva Andalucía

Built-in wardrobe and brand-new kitchen.

Aluminum windows with Climalit security glass plus security grilles.

Premium Travertine marble flooring.

Ducted air conditioning (hot/cold) throughout.

Video intercom system.

Fully renovated, furnished, and decorated exactly as seen in the photos.

Upper Level (Private Solarium – 32 m²):

BBQ area and chill-out zone.

Outdoor shower area with sun loungers.

Spectacular sea views.

Fully furnished and decorated.

Building & Amenities:

Included: Private parking space and a 6 m² storage room.

Facilities: Communal swimming pools and 4 large, new elevators (6-person capacity).

Maintenance & Security: Meticulously maintained building with security cameras in all areas and constant surveillance.

Financial Information:

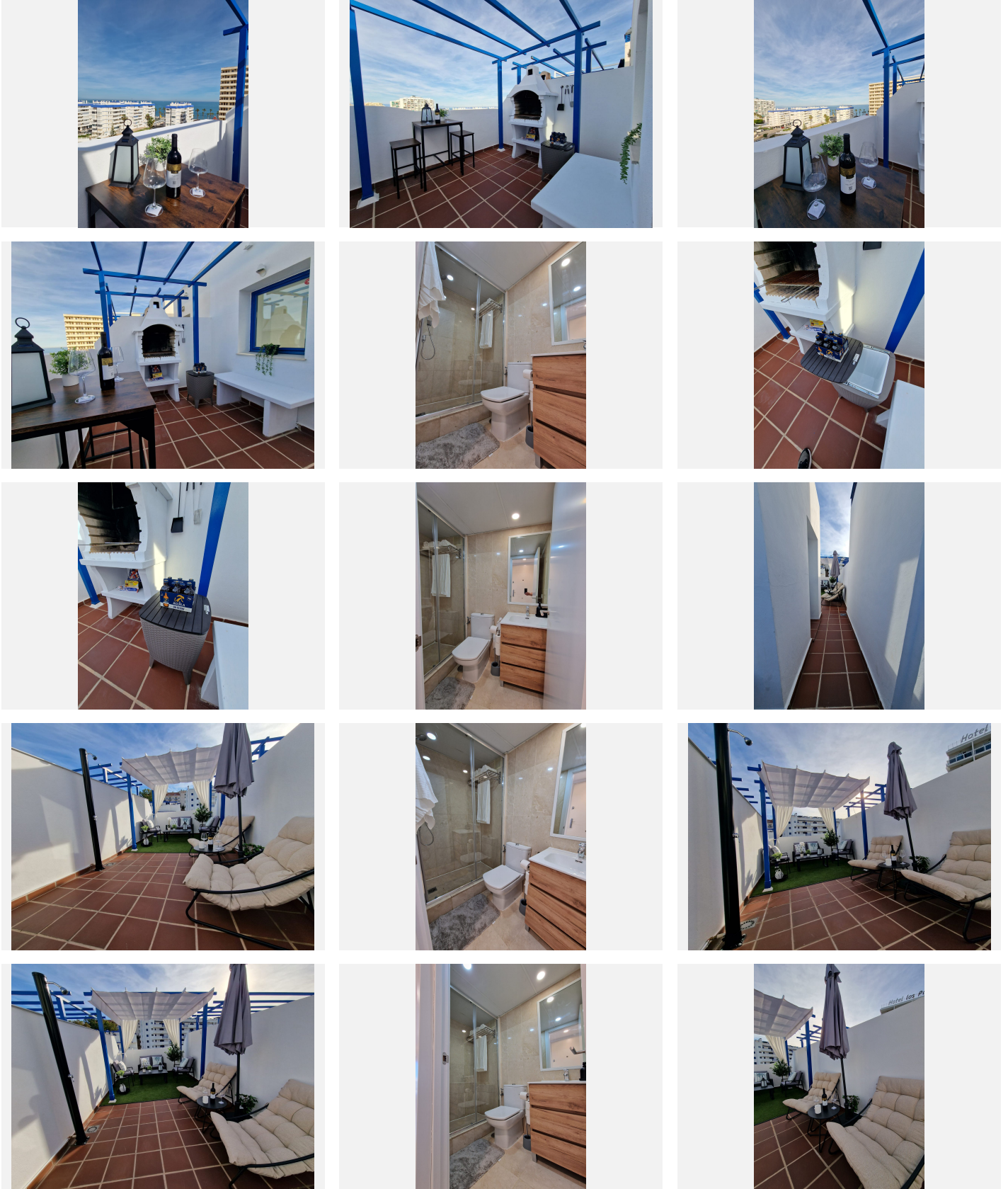
Community Fees: €55 / month.

IBI (Property Tax): €398 / year.

Rubbish Collection Tax: €172 / year.

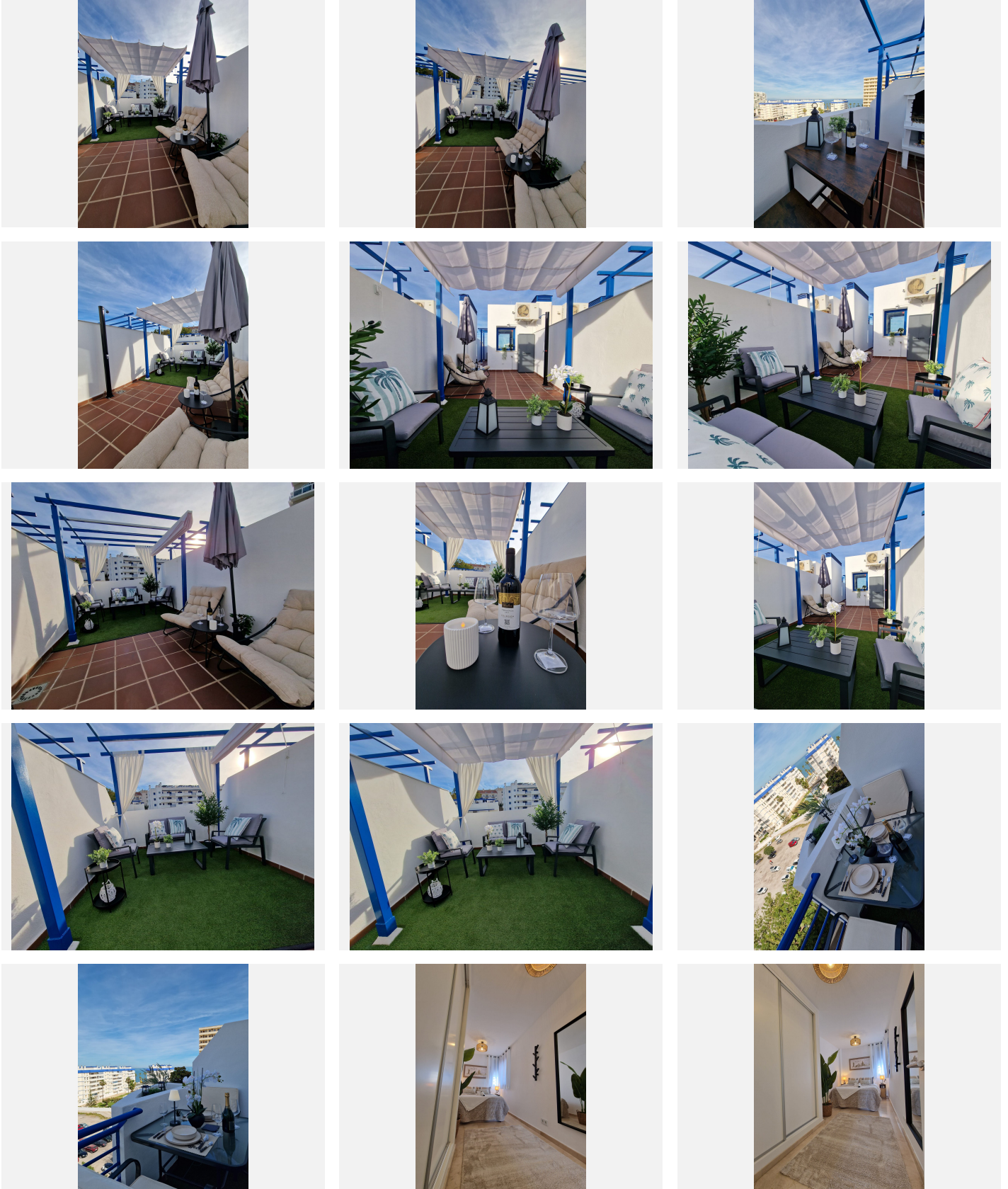
IDILIQ

ESTATES



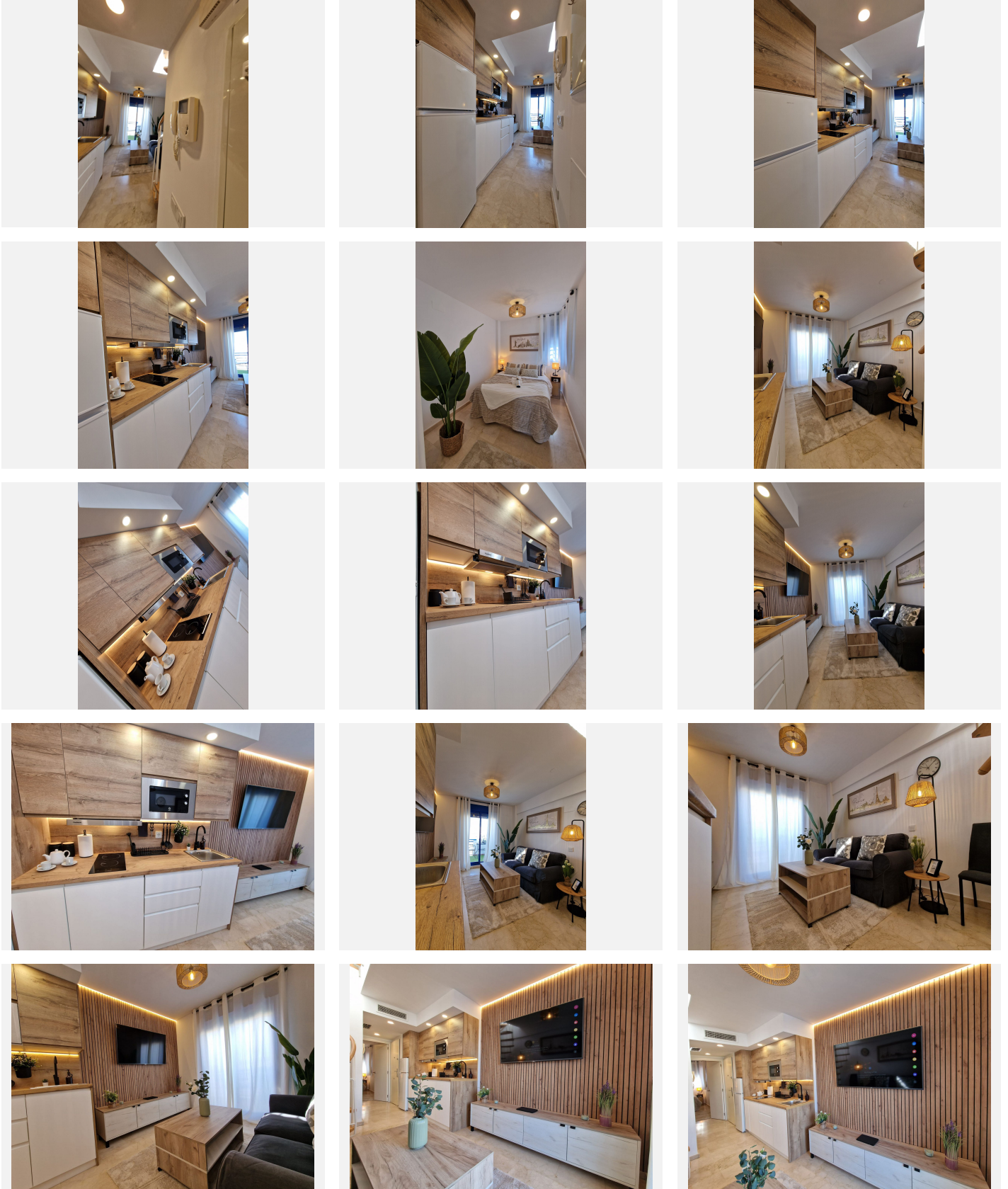
IDILIQ

ESTATES



IDILIQ

ESTATES



IDILIQ

ESTATES

