



R5151130

📍 Estepona

REF# R5151130 1.490.000 €

BEDS

4

BATHS

3

BUILT

185 m²

TERRACE

50 m²

Living on the seafront in The Edge, the iconic development in Estepona designed by Rafael de La-Hoz, means enjoying the Costa del Sol without compromise. This exclusive apartment is the result of combining two properties, now offering 4 bedrooms and 3 bathrooms, combining spaciousness, light and a contemporary design that opens out onto the Mediterranean.

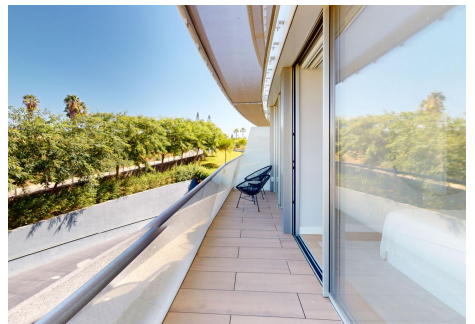
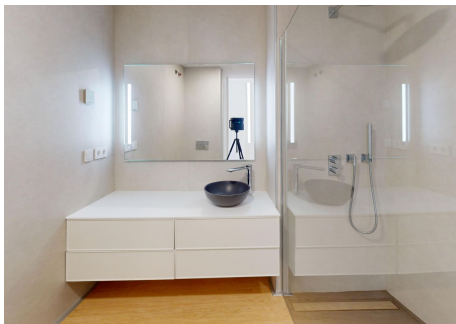
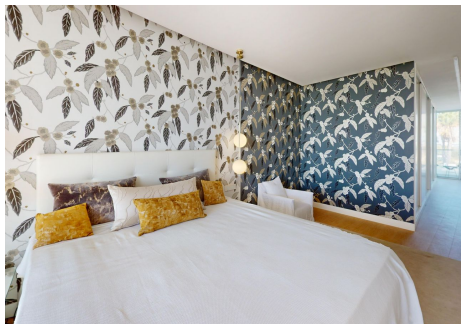
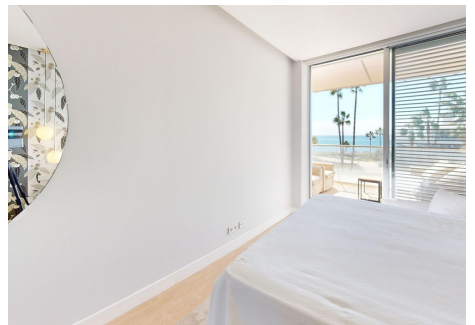
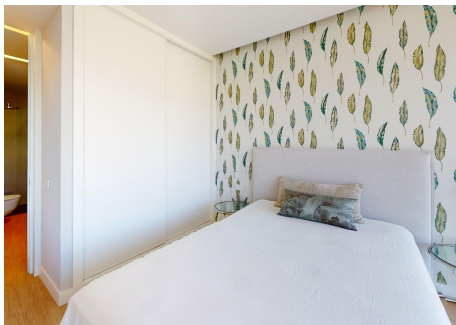
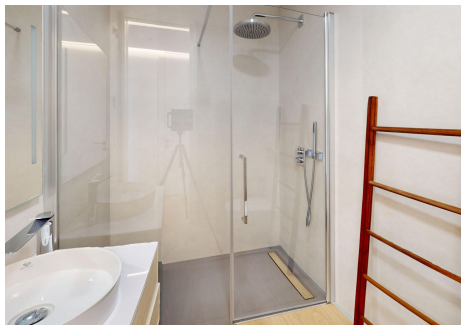
The living area comprises a large living-dining room with an open-plan kitchen, designed for social and family life, and connected to a large terrace where the sea views take centre stage at every moment of the day. The sleeping area has four bedrooms, including a master suite with a private bathroom and fitted wardrobes. The finishes are in keeping with the standard of the complex, which stands out for its high-end materials and organic lines inspired by the maritime environment.

The Edge is a residential complex renowned for its resort-style services: direct access to the beach, three outdoor infinity pools, a heated indoor pool, spa with sauna and Turkish bath, gym and well-tended pedestrian gardens that blend into the sand. The development is gated and has 24-hour security, concierge

service and communal coworking areas for residents.

Located in the quiet west of Estepona, with excellent connections to golf courses, marinas and restaurants, this home offers a high-end coastal experience all year round.

The price includes two parking spaces and two storage rooms in the basement.



# IDILIQ

ESTATES

