



R4950505

📍 Guadalmina Alta

REF# R4950505 545.000 €

BEDS

3

BATHS

2

BUILT

127 m²

TERRACE

17 m²

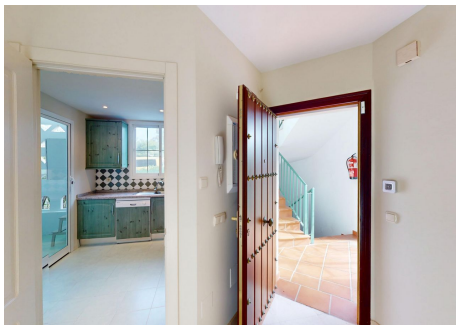
Located in one of the most sought-after developments in Guadalmina Alta, this magnificent corner flat offers a privileged lifestyle thanks to its Mediterranean design, low density housing and proximity to the Guadalmina Royal Golf Club. The development comprises only 20 townhouses and 60 flats, distributed in six elegant buildings, surrounded by extensive landscaped gardens. It also has two outdoor swimming pools, an artificial grass pitch for multiple sports and a large parking area. Layout and features of the property: On entering, a spacious reception hall gives way to a large fully equipped kitchen, with breakfast area and separate laundry room. The bright living-dining room, thanks to its privileged corner location, receives plenty of natural light throughout the day. This space has a cosy fireplace, ideal for the colder months. From the living room, there is access to the master bedroom, which has an en-suite bathroom with hydro-massage bathtub and separate shower* as well as direct access to a covered terrace with pleasant views of the communal areas. The property has two additional bedrooms, which share a complete bathroom. One of them stands out for its attractive bay window type window, which adds a special and luminous touch to the room. Extras and amenities: Air conditioning hot/cold Underfloor heating in bathrooms Double glazed windows Garage and storage room included Lift from the entrance to the garage An exceptional property in a consolidated and secure urbanisation, ideal both as a permanent residence and as

+34 951 123 083 | +44 (0)330 179 8687 | info@idiliqestates.com Local 28, Edificio D, Centro de Negocios Puerta de Banús, N-340, Km 175, 29660 Nueva Andlucia

IDILIQ

ESTATES

an investment in one of the most sought after areas of the Costa del Sol.



+34 951 123 083 | +44 (0)330 179 8687 | info@idiliqestates.com Local 28, Edificio D, Centro de Negocios Puerta de Banús, N-340, Km 175, 29660 Nueva Andalucía

