



R4965508

📍 Benahavís

REF# R4965508 1.600.000 €

BEDS

4

BATHS

4.5

BUILT

492 m²

PLOT

538 m²

TERRACE

136 m²

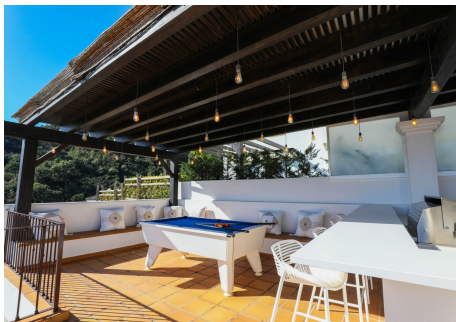
Nestled in an exclusive urbanization with 24-hour security, this magnificent villa offers a life of luxury and comfort in a privileged setting. Distributed over four floors, every corner of this property has been designed to maximize comfort and sea views. On the main floor, you'll find a modern open kitchen seamlessly integrated with the living-dining area, creating an ideal space for family gatherings and entertaining friends. This floor also includes a convenient guest restroom. The first floor features 3 en-suite bedrooms, each thoughtfully designed to ensure privacy and comfort. On the lower floor, there is a beauty room with an en-suite bathroom, perfect for relaxing and pampering yourself in the comfort of your home, a music room, laundry room, and wine cellar, as well as a garage with space for 2 vehicles, offering both functionality and style. The rooftop is a true oasis, complete with an outdoor kitchen and pergola, perfect for savoring the stunning sea views and creating unforgettable outdoor moments. The villa is equipped with an elevator, heated pool, and central air conditioning for both hot and cold, as well as underfloor heating on the main living floor and upstairs bathrooms, ensuring a luxurious and comfortable living experience year-round. Don't miss the opportunity to live in this exceptional villa in Benahavís Pueblo, where lifestyle meets nature and tranquility! Detached Villa, Benahavís, Costa del Sol. 4 Bedrooms, 4.5 Bathrooms, Built 492 m², Terrace 136 m², Garden/Plot 538 m². Setting : Village, Mountain Pueblo, Close To Shops, Close To

+34 951 123 083 | +44 (0)330 179 8687 | [info@idiliqestates.com](mailto:info@idiliqestates.com) Local 28, Edificio D, Centro de Negocios Puerta de Banús, N-340, Km 175, 29660 Nueva Andlucia

# IDILIQ

## ESTATES

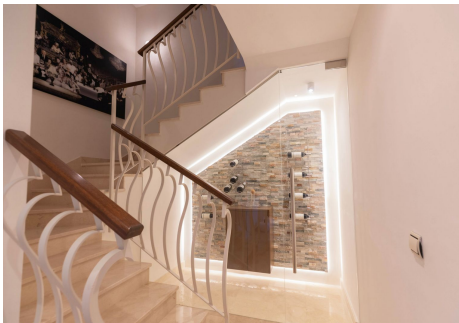
Schools, Urbanisation. Orientation : South East. Condition : Excellent, Recently Renovated, Recently Refurbished. Pool : Private, Heated. Climate Control : Air Conditioning, Fireplace, U/F Heating, U/F/H Bathrooms. Views : Sea, Mountain, Country, Panoramic, Pool. Features : Covered Terrace, Lift, Fitted Wardrobes, Private Terrace, Solarium, Utility Room, Ensuite Bathroom, Marble Flooring, Double Glazing. Furniture : Not Furnished. Kitchen : Fully Fitted. Garden : Private. Security : Gated Complex, 24 Hour Security. Parking : Garage, Private. Utilities : Electricity, Drinkable Water. Category : Luxury, Resale.





# IDILIQ

ESTATES



## ESTATES



ÁREA INTERNA BRUTA  
PLAYA 1 97.0 m<sup>2</sup> PLAYA 2 96.5 m<sup>2</sup> PLAYA 3 130.0 m<sup>2</sup> PLAYA 4 6.2 m<sup>2</sup>  
ÁREAS EXCLUSIVAS: GARAJE 45.9 m<sup>2</sup> TORREDA 30.4 m<sup>2</sup> PP23 30.7 m<sup>2</sup> PP23 40.7 m<sup>2</sup>  
BALCÓN 86.1 m<sup>2</sup> BALCÓN 3.0 m<sup>2</sup> BALCÓN 3.0 m<sup>2</sup> BALCÓN 42.5 m<sup>2</sup>  
TOTAL: 290.5 m<sup>2</sup>

LOS MAÑANES 7 LAS TARDESDOSADAS CON APARCAMIENTO Y PUERTE VARIAS EN ALGUNOS CASOS.



ÁREA INTERNA OBLIC

|                             |                             |                              |                            |
|-----------------------------|-----------------------------|------------------------------|----------------------------|
| PLAYA 1 97.8 m <sup>2</sup> | PLAYA 2 96.5 m <sup>2</sup> | PLAYA 3 138.0 m <sup>2</sup> | PLAYA 4 8.2 m <sup>2</sup> |
| ÁREAS EXTERIORES            | GARAJE 45.9 m <sup>2</sup>  | TERRAZA 10.4 m <sup>2</sup>  | PAPISO 58.7 m <sup>2</sup> |
| BALCÓN 96.1 m <sup>2</sup>  | BALCÓN 3.9 m <sup>2</sup>   | BALCÓN 3.9 m <sup>2</sup>    | BALCÓN 42.5 m <sup>2</sup> |
| TOTAL: 292.5 m <sup>2</sup> |                             |                              |                            |

LOS MÓDULOS F.LAS DIMENSIONES SON APROXIMADAS Y PUEDEN VARIAR EN ALGUNOS CASOS



ÁREA INTERNA BRUTA  
 PLANTA 1 87.0 m<sup>2</sup> PLANTA 2 96.5 m<sup>2</sup> PLANTA 3 200.0 m<sup>2</sup> PLANTA 4 8.2 m<sup>2</sup>  
 ÁREAS EXTERIORES : GARAJE 45.9 m<sup>2</sup> TERRAZA 13.4 m<sup>2</sup> INTD 58.7 m<sup>2</sup> INTD 48.7 m<sup>2</sup>  
 BALCÓN 98.1 m<sup>2</sup> BALCÓN 3.0 m<sup>2</sup> BALCÓN 3.0 m<sup>2</sup> BALCÓN 42.5 m<sup>2</sup>  
 TOTAL : 282.5 m<sup>2</sup>  
 LOS TAMAÑOS Y LAS DIMENSIONES SON APROXIMADAS Y PUEDEN VARIAR EN ALGUNOS CASOS



ÁREA INTERNA ÚTIL  
PLANTA 1: 87.8 m<sup>2</sup> PLANTA 2: 96.5 m<sup>2</sup> PLANTA 3: 238.0 m<sup>2</sup> PLANTA 4: 6.2 m<sup>2</sup>  
ÁREAS EXCLUIDAS: GARAJE 49.9 m<sup>2</sup> TERRAZA 30.4 m<sup>2</sup> PASAD 58.7 m<sup>2</sup> PASAD 45.7 m<sup>2</sup>  
BALCÓN 96.1 m<sup>2</sup> BALCÓN 3.0 m<sup>2</sup> BALCÓN 3.0 m<sup>2</sup> BALCÓN 42.5 m<sup>2</sup>  
TOTAL: 292.5 m<sup>2</sup>

LOS GARAJES Y LAS TERRAZAS SON PROPIEDADES Y PUEDEN VARIAR EN ALGUNOS CASOS.

