



R5199541

 Nagüeles

REF# R5199541 1.099.000 €

BEDS

4

BATHS

4

BUILT

161 m²

PLOT

72 m²

Nestled in the peaceful and prestigious Nagüeles area, right next to the foothills of La Concha and its surrounding national park, you'll find Casa Montana – a newly built home where no detail has been overlooked.

The property features generous parking with a private entrance leading directly into the lush garden. Here, you're welcomed by a sun-soaked southwest-facing terrace, a private pool, and an outdoor kitchen, ideal for relaxing and entertaining.

Inside, the ground floor spans nearly 80 m², comprising a stylish open-plan kitchen, spacious living room, entrance hall, and guest toilet. Scandinavian design principles define the space, with carefully selected, high-quality modern materials. Under the staircase, there's a custom wine storage area. All rooms are fitted with individually controlled Airzone systems for both heating and cooling, while underfloor heating is installed in all bathrooms. Wet areas are finished with tasteful, full-height tiles in a warm beige tone.

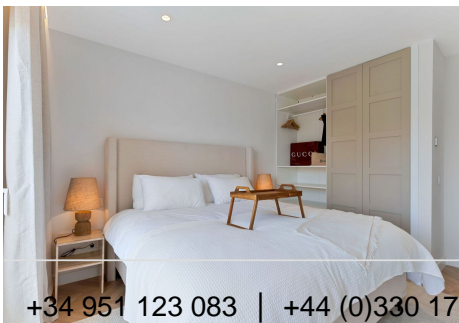
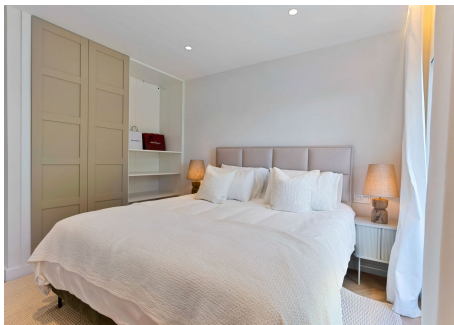
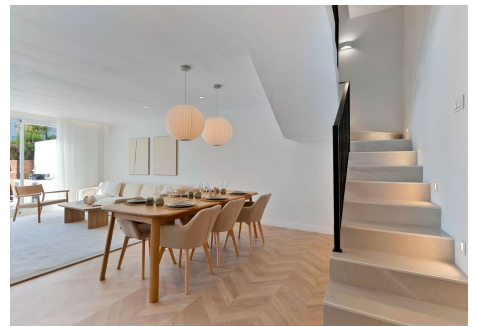
IDILIQ

ESTATES

On the first floor, you'll find the master bedroom with an en-suite bathroom and private balcony. A second bedroom also features its own bathroom and balcony, overlooking the courtyard and shared pool area.

The top floor boasts sloped ceilings and an additional sea-facing balcony with southwest orientation, offering partial views of the Mediterranean. Currently configured with two additional rooms (ideal as bedrooms or offices), plus a stylish bathroom with walk-in shower.

The kitchen is by renowned Scandinavian brand Ballingslöv, fully equipped with modern appliances, including integrated washer and dryer.



IDILIQ

ESTATES

