



MIDDLE FLOOR APARTMENT 4 BEDROOMS 2.5 BATHROOMS IN BENAHAVÍS

 Benahavís

REF# R5152306 1.900.000 €

BEDS

4

BATHS

2.5

BUILT

290 m²

TERRACE

58 m²

Located within the prestigious Real de La Quinta resort, surrounded by nature and only minutes from Marbella and Puerto Banus, Palmitos is a luxury residential project designed by Villarroel Torrico. With only 2 blocks and 40 homes, Palmitos stands out for its exclusivity, south orientation and panoramic views of the sea, the mountains and the golf course.

The properties combine space, elegance and quality, offering generous interior areas, large terraces perfect for year-round enjoyment, and access to beautifully designed communal areas. The layouts are conceived to maximize natural light and create seamless indoor-outdoor integration.

Highlights

Spacious living and dining areas with open-plan kitchens

Large covered terraces with panoramic views

Master bedrooms with en suite bathrooms

High-quality finishes and premium appliances

Modern design with floor-to-ceiling windows and glass railings

+34 951 123 083 | +44 (0)330 179 8687 | info@idiliqestates.com Local 28, Edificio D, Centro de Negocios Puerta de Banús, N-340, Km 175, 29660 Nueva Andlucia

IDILIQ

ESTATES

Climate comfort with Daikin hot and cold air conditioning, underfloor heating in bathrooms, and optional water-based underfloor heating throughout

Full home automation system with remote access

Top-quality aluminium carpentry with double glazing and integrated blinds

Resort amenities at Real de La Quinta

Golf course and academy

Navigable lake with water sports

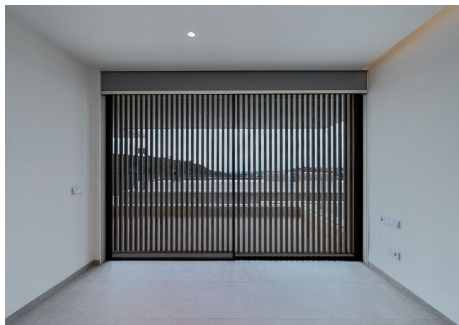
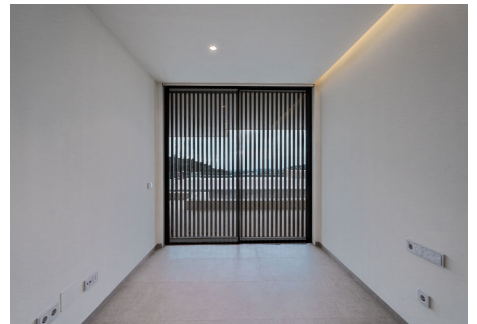
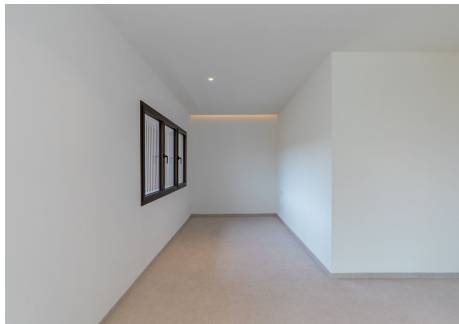
Tennis and paddle club

Social club with restaurant, gym and spa

24-hour security

Protected natural environment with hiking trails

Palmitos represents a unique opportunity to live in a privileged natural setting with all the services of a luxury resort and the comfort of a contemporary design created for modern Mediterranean living.



IDILIQ

ESTATES

