



TOWNHOUSE 3 BEDROOMS 3 BATHROOMS IN LOS ARQUEROS

📍 Los Arqueros

REF# R5236312 650.000 €

BEDS

3

BATHS

3

BUILT

138 m²

TERRACE

33 m²

Exterior

Located in El Alto within Los Arqueros, the townhouse occupies an elevated hillside position inside a gated residential urbanisation. The community is defined by landscaped gardens and two communal swimming pools, one oriented towards panoramic sea views. The property benefits from a south-facing terrace with open views across the Marbella and Estepona coastline extending towards Gibraltar, with protected surrounding land preserving the outlook. An upper terrace incorporates a private jacuzzi, reinforcing the multi-level exterior configuration.

Interior

Recently renovated, the townhouse combines traditional Andalusian architectural elements with contemporary interior finishes. The main living level integrates an open-plan kitchen and reception area with floor-to-ceiling sliding glass doors connecting directly to the terrace. The kitchen is equipped with Siemens appliances, and oak flooring runs throughout the principal areas. The layout comprises three bedrooms and

+34 951 123 083 | +44 (0)330 179 8687 | info@idiliqestates.com Local 28, Edificio D, Centro de Negocios Puerta de Banús, N-340, Km 175, 29660 Nueva Andalucía

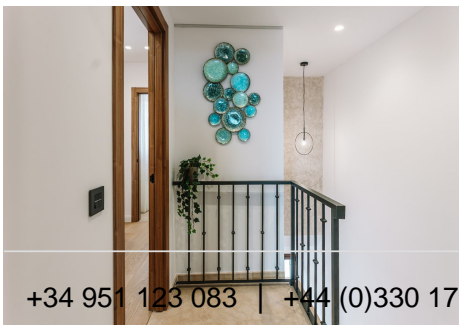
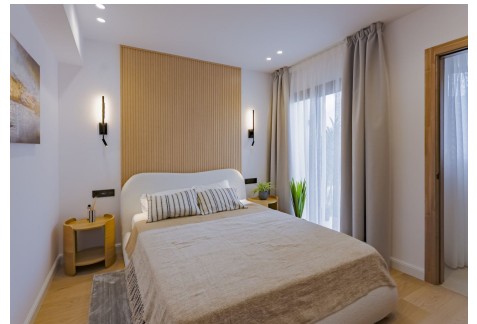
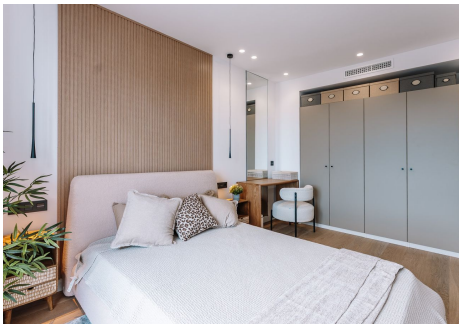
IDILIQ

ESTATES

three bathrooms distributed across levels to maintain separation between living and sleeping zones. Air conditioning is installed throughout. A private garage with rear storage space is included.

Location

Los Arqueros is a hillside residential and golf enclave in Benahavís, positioned between San Pedro de Alcántara and Marbella. The property is within walking distance of Los Arqueros Golf and close to local amenities including dining and leisure facilities. Puerto Banús and beaches are accessible within approximately 10–15 minutes, while Málaga International Airport can be reached in around 45–50 minutes, reinforcing accessibility within the Costa del Sol.



IDILIQ

ESTATES

