



R5006047

📍 Estepona

REF# R5006047 1.000.000 €

BEDS

3

BATHS

3

BUILT

441 m²

TERRACE

30 m²

Country estate for sale in Padrón Estepona with sea and mountain views, located just a 5 minute drive from the beach in Andalusia, Estepona, Costa del Sol, near Marbella and Puerto Banús.

Located in the exclusive area of El Padrón, Estepona, on the Costa del Sol, this spectacular country estate offers the best of rural living while still being close to all services. Just 5 minutes by car from the beach, and a short drive to Marbella and Puerto Banús, it is a unique opportunity to enjoy the tranquility of the countryside with easy access to the best of the coast.

Property Description:

The estate sits on a 5,830 m² plot, with a 441 m² constructed home that has been thoughtfully designed for comfort and functionality. Upon entry, you are welcomed by an elegant hallway that leads into a spacious living-dining room, beautifully lit and featuring a cozy fireplace. From the living room, you can step out onto a covered porch, perfect for enjoying panoramic views of both the sea and the surrounding mountains.

The kitchen is independent, fully equipped, and includes a breakfast area and a large pantry. The main floor also features the master bedroom with an en-suite bathroom and a spacious walk-in closet. Additionally, there are two generous-sized bedrooms that share a full bathroom. The property is fitted with air conditioning throughout, ensuring comfort year-round.

IDILIQ

ESTATES

Garage Area and Additional Space:

On the lower floor, there is a large garage area that could easily be converted into a gym, game room, or even more bedrooms, as it is a completely open and versatile space.

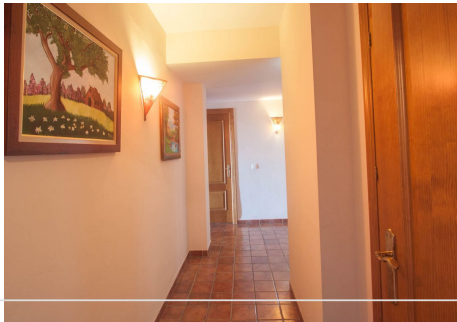
Exteriors:

The estate is accessed through an electric gate that leads to an outdoor parking area. Outdoors, there is a magnificent swimming pool surrounded by a barbecue area, perfect for enjoying sunny days. The plot is mostly flat and partially planted with fruit trees, adding both natural beauty and productivity to the property. It also has both well water and municipal water, providing an efficient and cost-effective irrigation system.

Location:

Despite its tranquil location, the estate is just a few minutes from the coast and close to all essential services, such as supermarkets, restaurants, and schools. The vibrant town of Estepona is only a short drive away, and the proximity to Marbella and Puerto Banús ensures an excellent selection of entertainment, luxury dining, and sports activities.

If you want to live in the countryside without giving up the proximity to the beach and all the services of the Costa del Sol, this estate is the perfect opportunity. Don't hesitate to contact us for more information and to arrange a visit to this impressive property!



IDILIQ

ESTATES



IDILIQ

ESTATES

