



R4450795

📍 Benalmadena

REF# R4450795 430.000 €

BEDS

2

BATHS

1

BUILT

106 m²

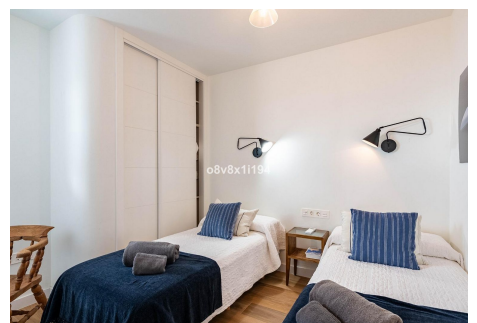
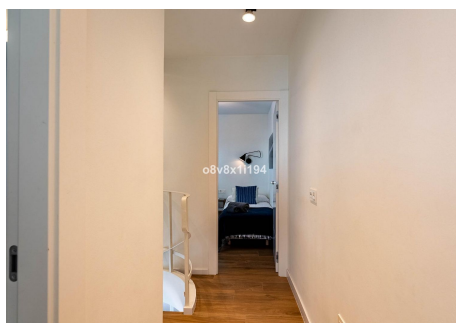
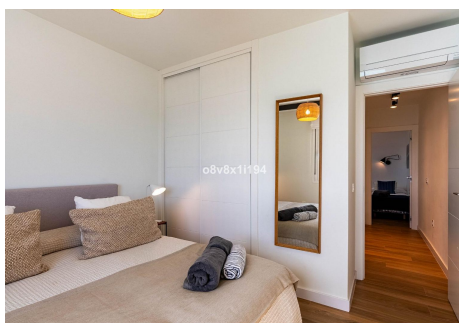
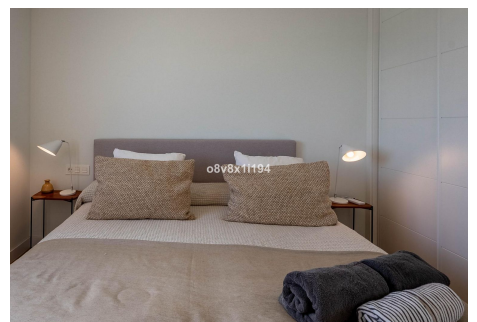
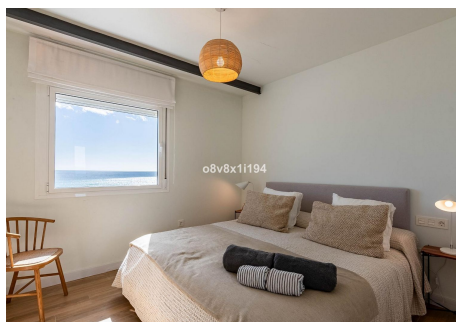
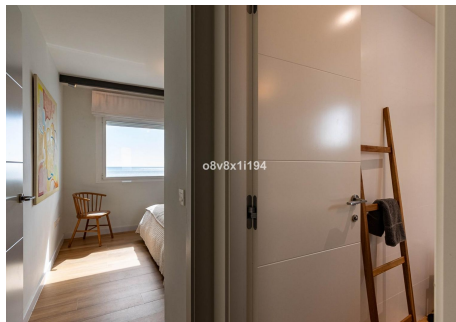
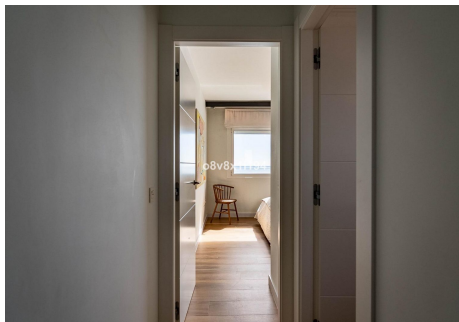
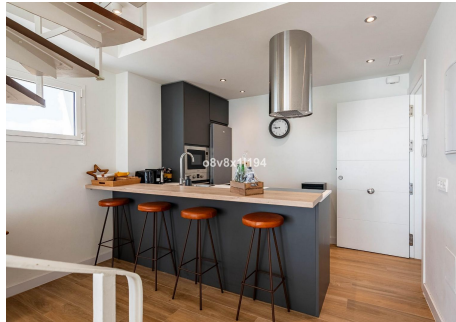
This stunning two-bedroom, one-bathroom duplex, located on the beachfront in the charming area of Torremuelle, is an exceptional opportunity for those seeking a luxury residence with panoramic views of the open sea. Just steps from the prestigious British College, this 2-level duplex offers a unique living experience.. . From the moment you walk in, you are greeted by stunning sea views that stretch as far as the eye can see. The intelligent design of the duplex maximizes its privileged location, allowing natural light to flood every corner of the house. High-quality PVC windows not only maximize light entry but also provide exceptional insulation, ensuring a calm and serene atmosphere at all times.. . The interior of the property has been completely renovated to the highest standards of quality and style. The kitchen, equipped with modern appliances, is a space where functionality meets luxury. High-quality flooring and stylish fixtures add a touch of sophistication to each room. . . The meticulously designed bedrooms feature built-in wardrobes offering ample storage space, while the bathroom is fitted with contemporary fittings and elegant finishes. Imagine waking up to the gentle sound of waves and stepping out onto your private balcony to enjoy the sunrise over the sea.. . In addition, the complex offers two impressive swimming pools where you can relax and enjoy the sunny climate of the Costa del Sol. In addition, comfort is guaranteed with the building's elevator, facilitating access to your home regardless of the floor you are on.. . A particularly attractive

+34 951 123 083 | +44 (0)330 179 8687 | info@idiliqestates.com Local 28, Edificio D, Centro de Negocios Puerta de Banús, N-340, Km 175, 29660 Nueva Andlucia

IDILIQ

ESTATES

feature of this property is its tourist license, making it ideal for those looking for a lucrative investment. You can take advantage of this opportunity to rent the property to tourists and visitors, generating significant income when you are not using it personally.. . In short, this beachfront duplex near the British College is much more than a property; It is a lifestyle. A place where luxury meets comfort, offering unparalleled views and exciting investment opportunities. Don't miss the opportunity to make this place your ideal home or investment on the beautiful coast of Torremuelle..



IDILIQ

ESTATES

