



R4449841

📍 Torremuelle

REF# R4449841 389.000 €

BEDS

2

BATHS

1

BUILT

88 m²

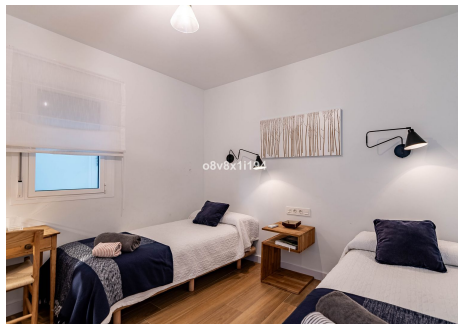
This charming beachfront apartment in Torremuelle, Benalmádena, offers a unique opportunity for those seeking a seaside residence with modern amenities and a convenient location close to the British College. With two bedrooms and a bathroom, this completely renovated apartment is ideal for those looking for a secure investment and an exceptional living experience. The apartment has been renovated to perfection, offering an elegant and contemporary interior space. The kitchen, fully equipped with modern appliances and elegant finishes, is a place where functionality meets style. The living room, flooded with natural light thanks to its front-line location, offers a warm and welcoming atmosphere with panoramic views of the Mediterranean Sea. The two bedrooms are spacious, with enough space for storage thanks to the built-in wardrobes. The bathroom, equipped with modern fixtures and elegant tiles, offers a relaxing oasis after a day at the beach. The property has an elevator, which makes access to the home easier, especially for those with reduced mobility. Additionally, the residential complex offers two stunning swimming pools where residents can relax and enjoy the Costa del Sol sun. The location right on the beach means you can wake up and be on the sand in a matter of minutes, enjoying the sea breeze and the relaxing sound of the waves. A particularly attractive feature of this apartment is its tourist license. This feature not only makes this property an ideal choice for those looking for a safe and profitable investment through short-term rental, but

+34 951 123 083 | +44 (0)330 179 8687 | info@idiliqestates.com Local 28, Edificio D, Centro de Negocios Puerta de Banús, N-340, Km 175, 29660 Nueva Andalucía

IDILIQ

ESTATES

also provides great flexibility to the owners in terms of use. In short, this beachfront apartment in Torremuelle is an ideal investment opportunity and a joy for those looking for a life by the sea. With its enviable location, modern amenities and tourist license, it represents the best of the coastal lifestyle in beautiful Benalmádena.



IDILIQ

ESTATES

