



R5058079

 Mijas

REF# R5058079 475.000 €

BEDS

4

BATHS

2

BUILT

116 m²

PLOT

230 m²

TERRACE

61 m²

We present this bright and functional semi-detached house with 4 bedrooms, located in the peaceful residential area of El Coto, in Las Lagunas de Mijas. This is a highly sought-after area thanks to its family-friendly atmosphere, excellent connectivity, and prime location, offering schools, supermarkets, medical centers, parks, and all essential services just a few minutes' walk away. It also provides easy access to Fuengirola, the A-7 motorway, and the beaches of the Costa del Sol.

Smart layout and double outdoor space. Additionally, a fourth bedroom with its own en-suite bathroom was added on the ground floor, although it is not officially registered.

The house is distributed over two floors:

On the ground floor you will find:

- A spacious and bright living room
- An independent kitchen
- One bedroom with an en-suite bathroom

+34 951 123 083 | +44 (0)330 179 8687 | info@idiliqestates.com Local 28, Edificio D, Centro de Negocios Puerta de Banús, N-340, Km 175, 29660 Nueva Andlucia

- A guest toilet
- Access to two patios:
 - The front patio faces Tórtolas del Coto Street.
 - The rear patio includes a storage area and a covered garage with access from Palomas del Coto Street — ideal for families who appreciate outdoor space and functionality.

Upstairs:

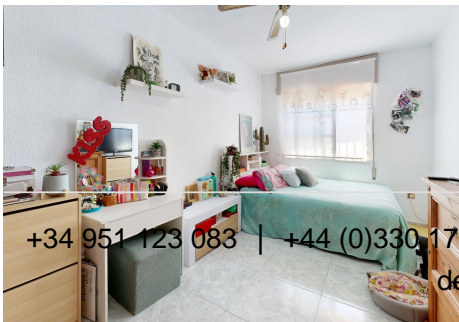
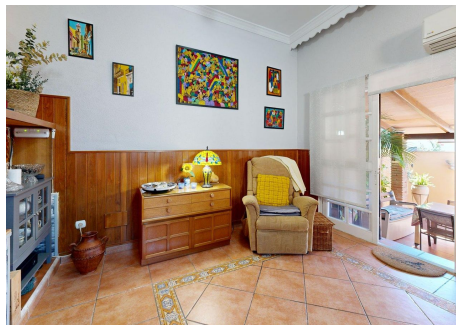
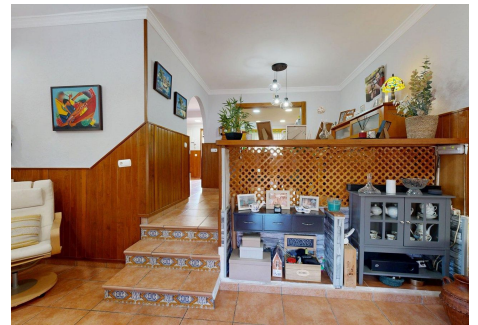
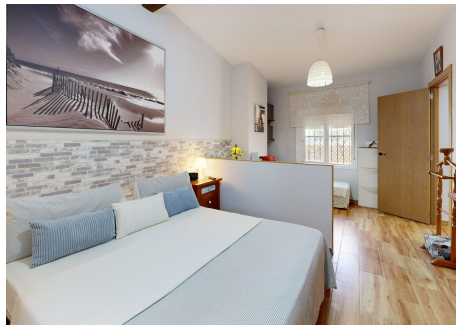
- 3 bedrooms
- 2 full bathrooms.

The house is partially furnished and ready to move in, while still offering room for customization to suit the buyer's taste.

An ideal opportunity for those looking to live in a quiet, safe, and well-connected area, with everything within reach and plenty of space for the whole family.

The abbreviated information document is available to you. Expenses: Taxes (ITP or VAT+AJD) + Notarial and registration expenses.

VOA



IDILIQ

ESTATES



PLANTA 1

DETALES DE LA PLANTA 1
 SUPERFICIE CONSTRUIDA: 100,00 m² SUPERFICIE TOTAL: 100,00 m² TERRENO: 100,00 m²
 GARAJE: 100,00 m² PISCINA: 100,00 m² PISCINA: 100,00 m² PISCINA: 100,00 m²
 PISCINA: 100,00 m² PISCINA: 100,00 m² PISCINA: 100,00 m² PISCINA: 100,00 m²

LOS TAMAÑOS Y LAS DISTRIBUCIONES SON APROXIMATIVAS Y PUEDEN VARIAR SIN AVISARLO ANTES.

Matterport



PLANTA 2

DETALES DE LA PLANTA 2
 SUPERFICIE CONSTRUIDA: 100,00 m² SUPERFICIE TOTAL: 100,00 m² TERRENO: 100,00 m²
 GARAJE: 100,00 m² PISCINA: 100,00 m² PISCINA: 100,00 m² PISCINA: 100,00 m²
 PISCINA: 100,00 m² PISCINA: 100,00 m² PISCINA: 100,00 m² PISCINA: 100,00 m²

LOS TAMAÑOS Y LAS DISTRIBUCIONES SON APROXIMATIVAS Y PUEDEN VARIAR SIN AVISARLO ANTES.

Matterport