



R5126269

📍 La Quinta

REF# R5126269 1.495.000 €

BEDS

3

BATHS

3

BUILT

145 m²

TERRACE

163 m²

Set high above the lush landscape of La Quinta in Benahavís, this exceptional duplex penthouse offers a unique blend of luxury, privacy, and jaw-dropping panoramic views. Just a 7-minute drive from Puerto Banús and even closer to the top three golf courses in Nueva Andalucía's prestigious Golf Valley, this home is a haven for golf lovers and those seeking the ultimate Costa del Sol lifestyle.

With a total built area of 308 m², the property features 124 m² of elegant interior living space and an expansive 163 m² of terraces—complete with a private swimming pool. Facing south, the penthouse enjoys all-day sun and boasts some of the most breathtaking vistas in the region, including sweeping views of the Mediterranean Sea and the iconic La Concha mountain.

Inside, you'll find 3 generously sized bedrooms and 3 contemporary bathrooms, two of which are en-suite. The open-plan kitchen and living area are designed for modern living and effortless entertaining, flowing directly onto the outdoor terrace.

Additional features include:

+34 951 123 083 | +44 (0)330 179 8687 | info@idiliqestates.com Local 28, Edificio D, Centro de Negocios Puerta de Banús, N-340, Km 175, 29660 Nueva Andlucia

IDILIQ

ESTATES

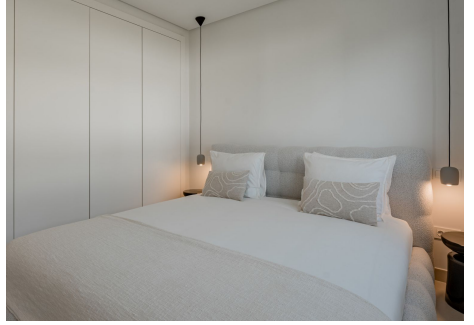
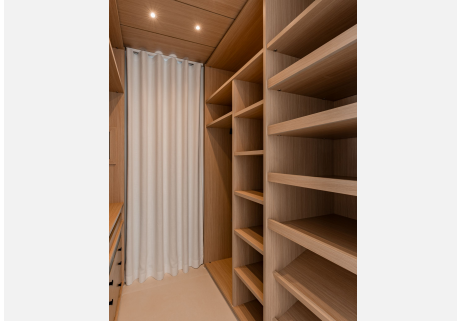
- 2 underground parking spaces
- Private storage room
- Communal swimming pool
- Gated community with only 18 exclusive residences

A rare opportunity to own a home that delivers high-end living, unmatched views, and a prime location in one of the Costa del Sol's most sought-after enclaves



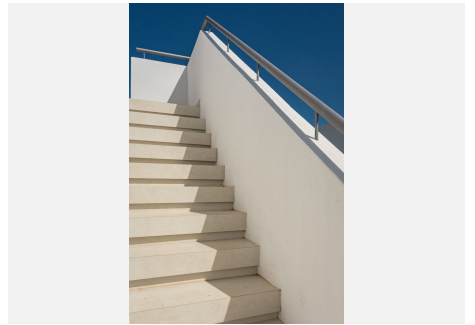
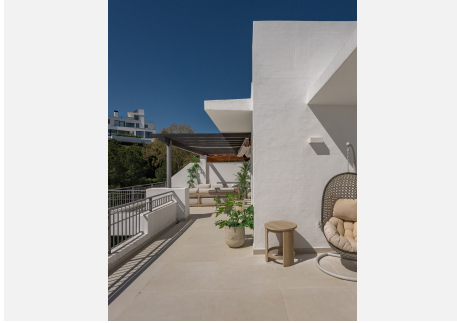
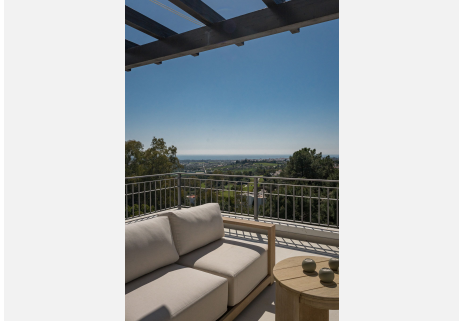
IDILIQ

ESTATES



IDILIQ

ESTATES



IDILIQ

ESTATES

