



R4893076

📍 Nueva Andalucía

REF# R4893076 1.750.000 €

BEDS

3

BATHS

4.5

BUILT

385 m<sup>2</sup>

PLOT

35 m<sup>2</sup>

TERRACE

125 m<sup>2</sup>

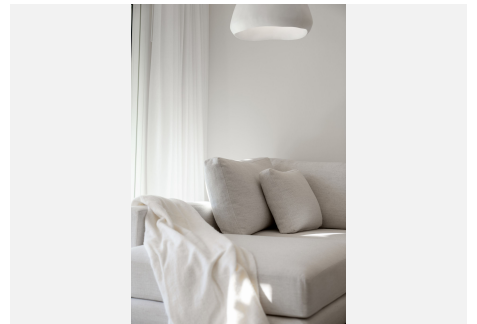
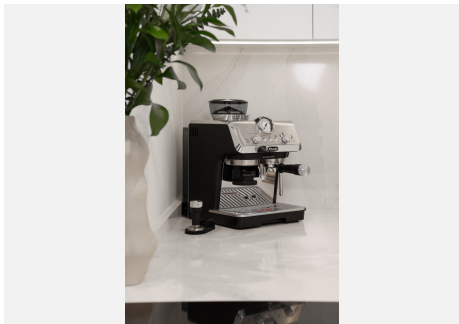
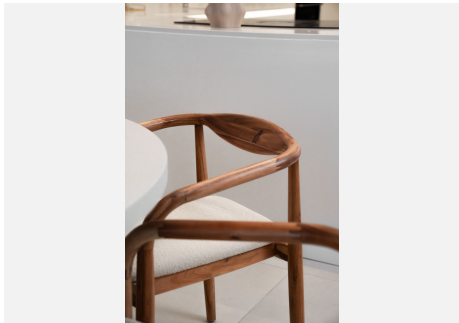
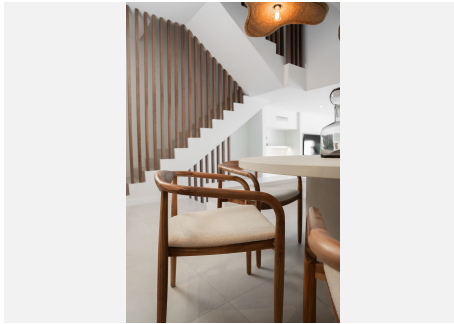
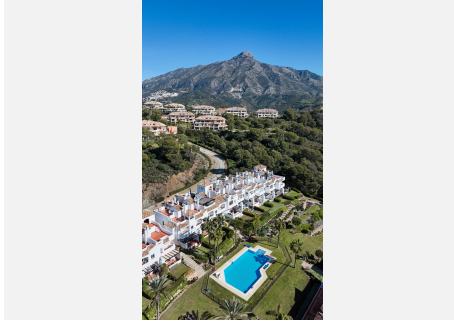
This stunning detached townhouse, fully renovated in 2024, is a true gem located in a tranquil residential area of Altos de Aloha, one of Nueva Andalucía's most desirable neighborhoods. Designed with Scandinavian elegance, the home blends seamlessly with its natural surroundings, offering a modern yet cozy living experience. The bright, open-plan layout includes a sleek contemporary kitchen, a welcoming living room with a fireplace, separate dining area and three serene and spacious bedrooms, each with en-suite bathrooms, a walk-in closet, and fitted wardrobes. The outdoor spaces are designed for both relaxation and entertainment, featuring a private pool with a jacuzzi in the rooftop solarium offering breathtaking views of the Aloha Golf Course, La Concha mountain, and the sparkling Mediterranean Sea, as well as a fully-equipped outdoor kitchen with a BBQ and dining area. With three terraces and a landscaped garden on the ground level, there's no shortage of inviting spaces to enjoy the Costa del Sol's enviable climate. The lower level of the property adds an extra layer of luxury, boasting a private cinema room, a hammam, an exercise room, a laundry area, an additional bathroom, and private parking for two cars. Set within a secure gated community of just 42 charming townhouses, the property also provides access to beautifully maintained communal gardens, a swimming pool, and a tennis court. Positioned in the heart of the Golf Valley, it's surrounded by world-class golf courses such as Aloha Golf Club, Las Brisas, and Los Naranjos.

+34 951 123 083 | +44 (0)330 179 8687 | [info@idiliqestates.com](mailto:info@idiliqestates.com) Local 28, Edificio D, Centro de Negocios Puerta de Banús, N-340, Km 175, 29660 Nueva Andalucía

# IDILIQ

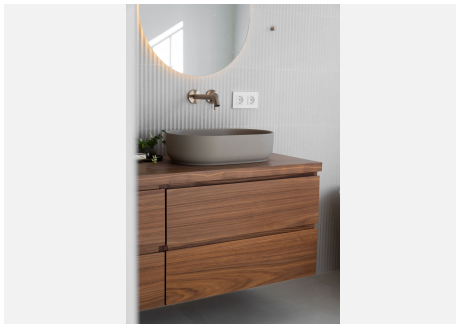
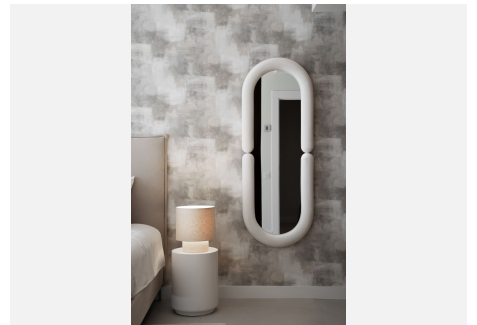
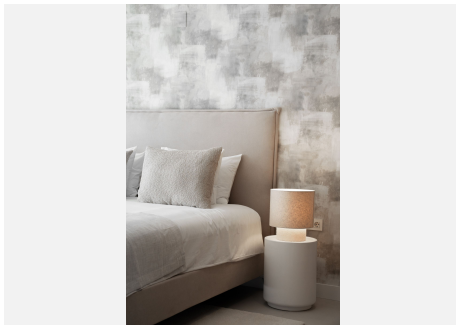
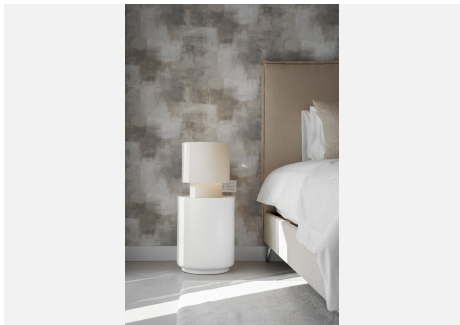
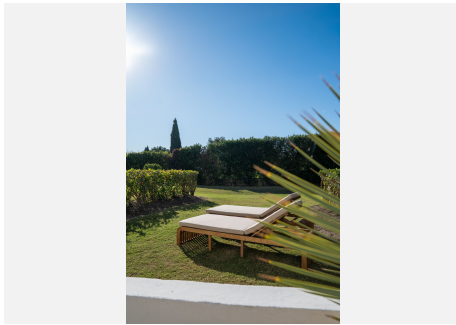
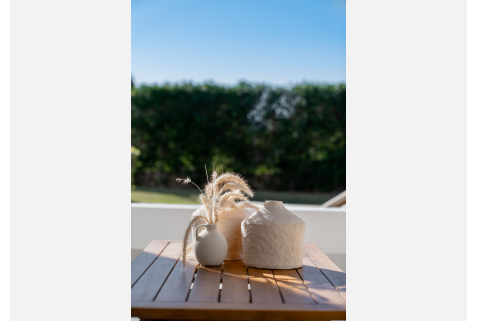
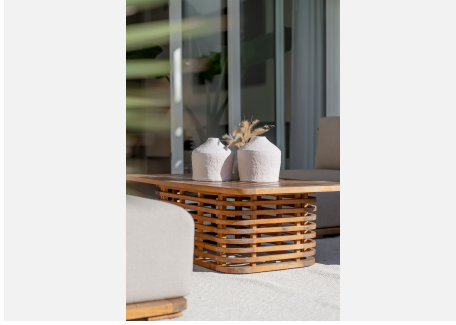
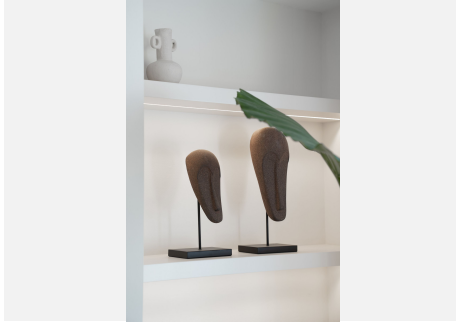
ESTATES

Conveniently close to schools, airports, and essential services, this home is perfect for families and professionals seeking a sophisticated yet comfortable lifestyle. This is more than just a house; it's a sanctuary of modern luxury and natural beauty.



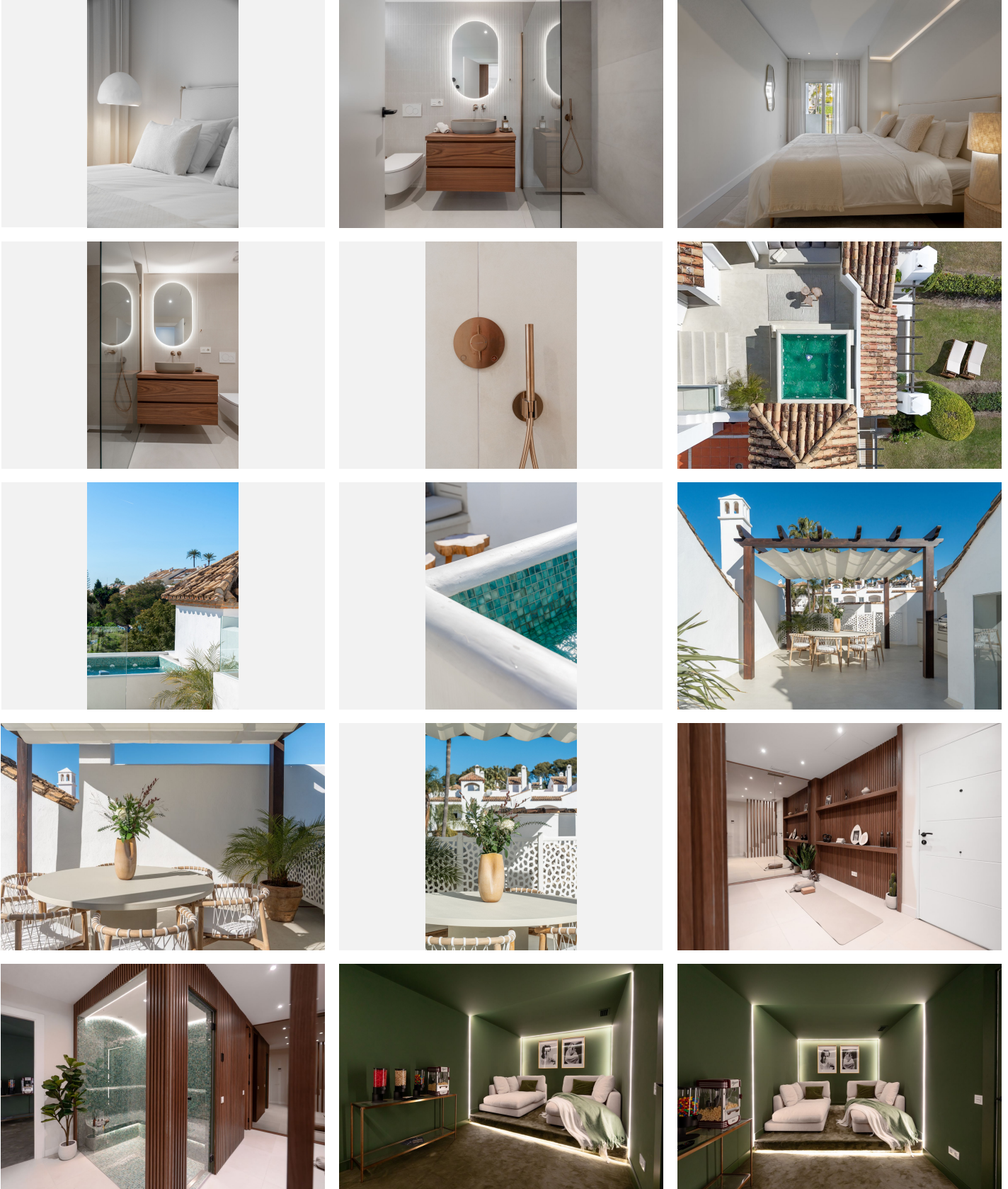
# IDILIQ

ESTATES



# IDILIQ

ESTATES



# IDILIQ

ESTATES

