



R4830505

📍 Manilva

REF# R4830505 189.000 €

BEDS

1

BATHS

1

BUILT

60 m²

TERRACE

22 m²

Fantastic penthouse one bedroom spacious apartment. It has parking, pool and two large terraces facing east and west with sea views, also is there a lift and a fireplace. The apartment comes fully furnished and is ready for you to move in now!

Lovely property in princesa kristina Manilva.

Top Floor Apartment, Manilva, Costa del Sol.

1 Bedroom, 1 Bathroom, Built 60 m², Terrace 22 m².

Setting : Suburban, Urbanisation.

Orientation : South, South West.

Condition : Excellent.

Pool : Communal.

Climate Control : Air Conditioning, Hot A/C, Cold A/C, Fireplace.

Views : Sea, Mountain, Panoramic, Garden.

Features : Covered Terrace, Lift, Fitted Wardrobes, Private Terrace, Ensuite Bathroom, Marble Flooring,

+34 951 123 083 | +44 (0)330 179 8687 | info@idiliqestates.com Local 28, Edificio D, Centro de Negocios Puerta de Banús, N-340, Km 175, 29660 Nueva Andlucia

IDILIQ

ESTATES

Double Glazing.

Furniture : Optional.

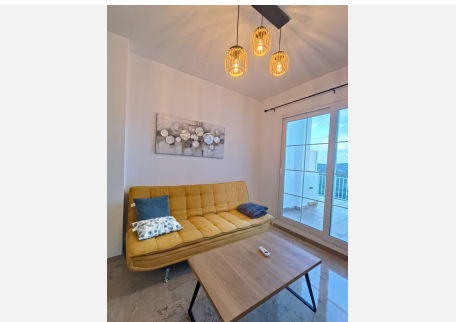
Kitchen : Fully Fitted.

Garden : Communal.

Security : Gated Complex.

Parking : Underground, Private.

Category : Bargain, Cheap, Golf, Holiday Homes, Investment, Luxury, Reduced, Resale.



IDILIQ

ESTATES

